



GLOBAL BUSINESS COURSE

UNIVERSITY OF
HYOGO

SCHOOL OF
ECONOMICS &
MANAGEMENT

KOBE
JAPAN



KOBE CAMPUS

Kobe Campus for Commerce is located in Gakuentoshi, the special educational district of Kobe.

The campus is home to the Global Business Course as well as the School of Economics and Management.

It is a calm, idyllic setting for study with easy access to central Kobe, major airports, and bullet train stations.

GLOBAL BUSINESS COURSE

The School of Economics and Management offers a business course with a difference! This program will bring students from all over the world to learn together in a multicultural environment.

The program features:

- 1) All classes conducted in English.
- 2) Small class sizes.
- 3) The opportunity to learn Japanese language and culture.
- 4) Exciting fieldwork and internship opportunities.



Welcome!

*The University of Hyogo
prepares you for a career in
the International Arena.*



Isao Ohta
President of The University of Hyogo

The University of Hyogo, dating back nearly ninety years, is one of Japan's leading public universities, consisting of six undergraduate schools, fourteen graduate schools, four affiliated institutes, and affiliated junior and senior high schools. The university's campuses are located in cities across Hyogo Prefecture, itself known as a "Microcosm of Japan" for its rich culture, long history, and diverse environments.

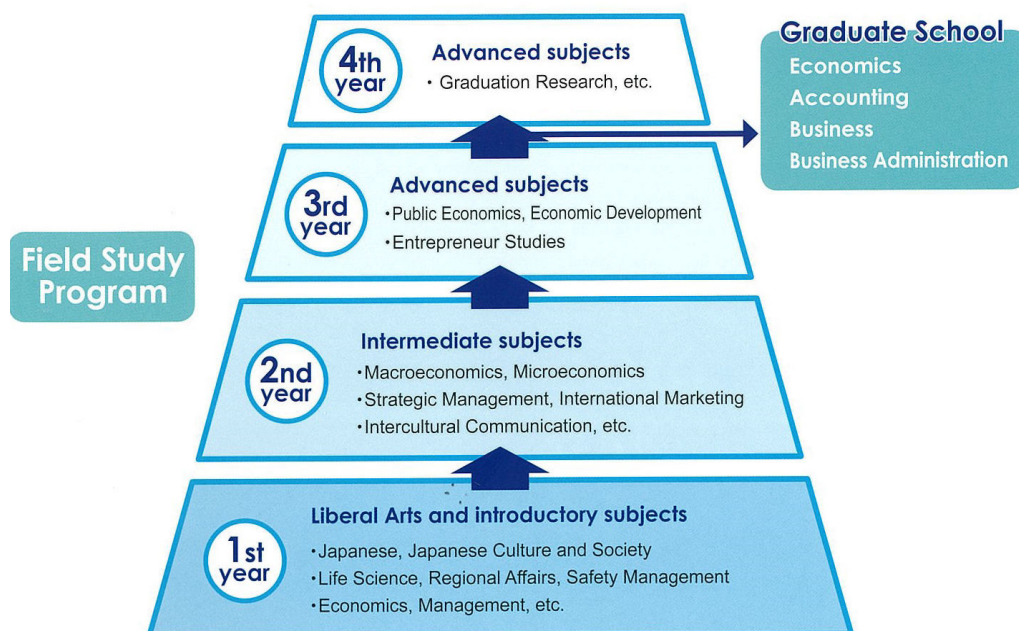
The University of Hyogo has produced talented graduates in the fields of economics, industry, academia, medicine, and healthcare who have built

successful careers as business and academic leaders. Our university has also attracted numerous international students who have found employment in Japan.

In 2019 we initiated a new program, the "Global Business Course" for future leaders from around the world.

We all welcome you to join the GBC, which will provide various intellectual insights and prepare you for your future career in the international arena. We firmly believe that your time at our university will be pleasant and fruitful.

The Global Business Course lets you earn a Bachelor of Economics Degree with a Practical Specialization.



Examination and Admission Fees

(JP Yen)

Item	Student Classification	Regular Price	Grant	Amount to be Paid
Examination Fee	All students	17,000	8,500	8,500
Admission Fee (only for 1st year)	All students	282,000	141,000	141,000

* Prices subject to change

Tuition Fee and Financial Aid exclusive for "Global Business Course" Students

(JP Yen)

Item	Student Classification	Price	Grant	Amount to be Paid
Tuition Fee (per person)	1st Year	All students	535,800	267,900
	Each of 2nd~4th Year	Top 30% of Year	535,800	0
		Other students	267,900	267,900
Tuition Fee (per person)	Total for 4 Years	Always top 30% of Year	2,143,200	1,875,300
		Always other students	1,071,600	1,071,600

* Prices subject to change

Living Expenses

(JP Yen)

Item	Student Classification	Amount
Monthly room fee of International Dormitory (* newly built for "Global Business Course" students)	All First Year Global Business Course students	30,000
Average monthly living expenses		Approximately 80,000

* Prices subject to change

Other Possible Financial Aid

Japanese Government Scholarship
Private and Public Scholarships offered by various organizations



After Graduation

Over half of the international students who have graduated from the University of Hyogo are currently working in Japan, and others have continued to graduate studies. Graduates have found jobs in trade, commerce, manufacturing, and finance.

The contents, details, and pricing of the Global Business Course are under development. Please check our website for the latest information.

How to Apply

Eligibility

The Global Business Course is open to those who will have completed a 12-year curriculum of school education in a foreign country, or have completed an equivalent education as specified by the Ministry of Education of Japan, prior to enrollment at the University of Hyogo.

Screening Process

Students are selected for admission based on their application materials and interviews. The interviews will be conducted in English. While we try to conduct these interviews face to face, distance and time constraints sometimes require the use of online interviews. In some cases the applicant's schools and/or the author of the recommendation letter may be contacted.

Required Documents

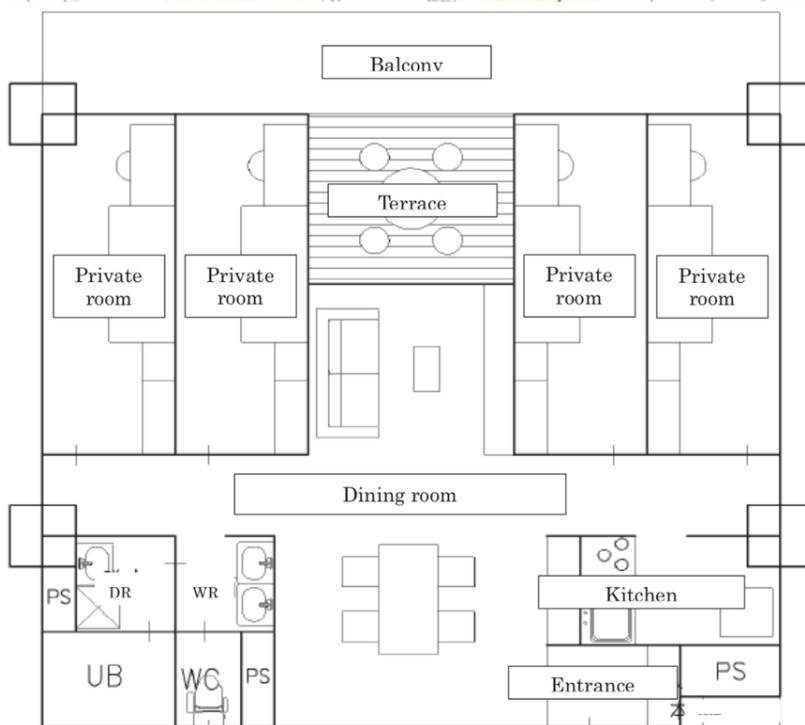
- 1) A completed Application Form (including two short essays)
(The application form can be found at: <http://www.u-hyogo.ac.jp/english/index.html>)
- 2) A certificate of academic achievement, or a high school transcript.
- 3) A certificate of English Proficiency or a reference from an English teacher.
One of the following: TOEFL iBT Test-42, IELTS-4.0,
Cambridge English Language Assessment -140, TOEIC L&R + TOEIC S&W-1150
- 4) Letters of recommendation from an academic advisor/teacher
- 5) A Certificate of Expected Graduation/Program completion.
- 6) Other items that may be required depending on the applicant's country and situation.
- 7) For more details visit our website at: <http://www.u-hyogo.ac.jp/english>



International Dormitory

The University of Hyogo's International Dormitory, located on the Kobe Campus for Commerce, accommodates 150 international and Japanese students. This community setting provides opportunities for multicultural cooperation and learning. International support staff are located on the first floor, and are ready to answer your questions and assist you with your life in Japan.

First year students are required to stay in the dormitory for at least one year, after which support is provided for moving off campus.



Kobe, Japan



Kobe is the capital city of Hyogo Prefecture, and the 6th largest city in Japan. It is located on the center of Honshu Island, the largest of Japan's four main islands.

The city as we know it was founded in 1889, and was one of the first Japanese cities to open for trade with the West. It remains a cosmopolitan city that is home to global companies such as ASICS, Kawasaki Heavy Industries, and Kobe Steel.

Kobe Campus for Commerce



University of Hyogo Headquarters
8-2-1 Gakuennishi-Machi,
Nishi-Ku, Kobe, Hyogo
651-2197

Japan

TEL: +81-78-794-5362 (Int'l Office)

FAX: +81-78-794-6172

EMAIL: gbc@hq.u-hyogo.ac.jp

WEB: <http://www.u-hyogo.ac.jp/english>

Campus Life

The University of Hyogo has a wide range of clubs, circles, and sports groups practicing everything from tea ceremony, to hip-hop dance, to American football. There's bound to be something that will appeal to you!

