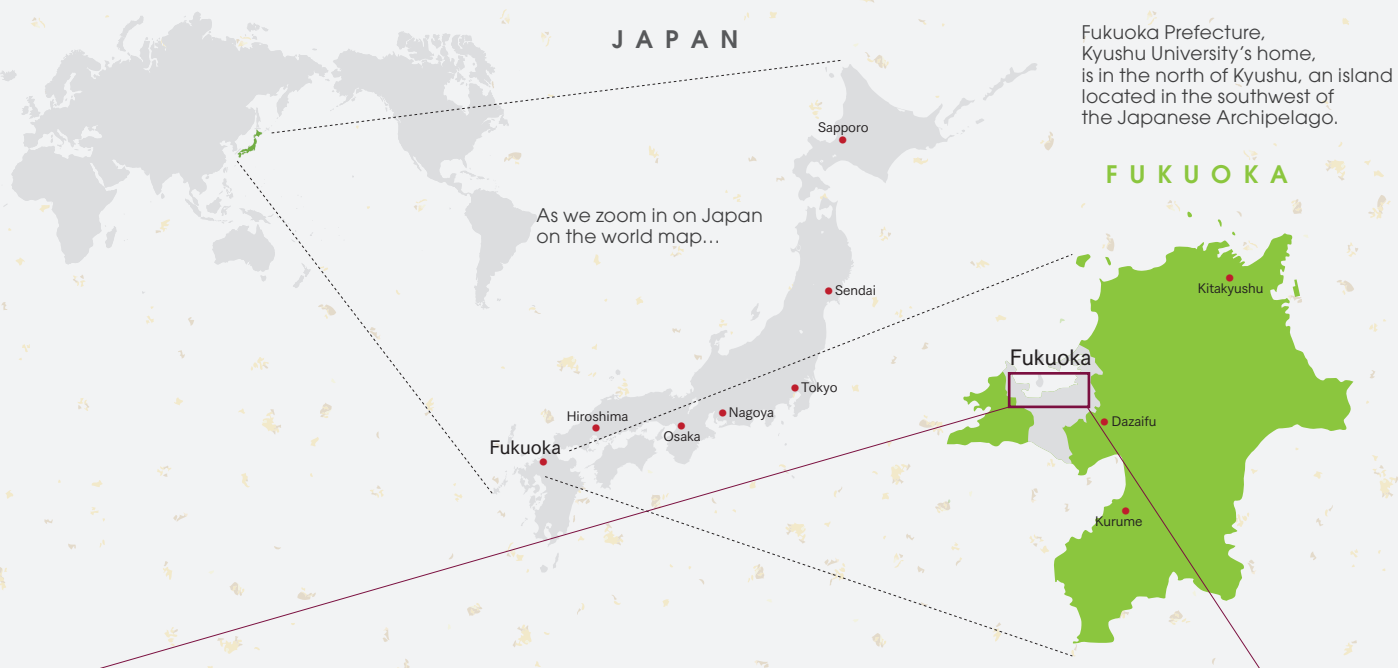


WORLD

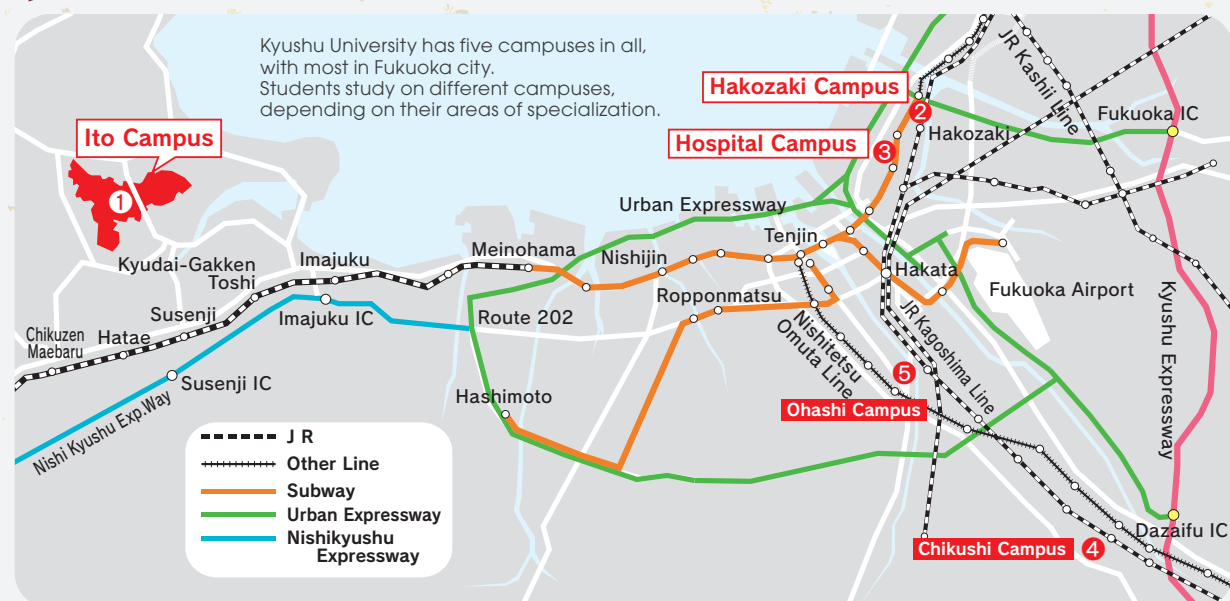
## CAMPUS LOCATIONS

JAPAN



As we zoom in on Japan on the world map...

FUKUOKA



Kyushu University has five campuses in all, with most in Fukuoka city. Students study on different campuses, depending on their areas of specialization.

Legend:  
 - - - - - J R  
 + + + + + Other Line  
 ——— Subway  
 ——— Urban Expressway  
 ——— Nishikyushu Expressway



① Ito Campus



② Hakozaki Campus

※We plan to relocate to Ito Campus in October 2018.



③ Hospital Campus



④ Chikushi Campus



⑤ Ohashi Campus

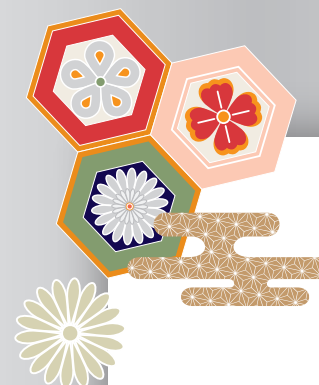


KYUSHU  
UNIVERSITY

Department of Bioresource and Bioenvironment  
School of Agriculture

<http://www.agr.kyushu-u.ac.jp/english/>

Kyushu University, 6-10-1, Hakozaki, Higashi-ku, Fukuoka 812-8581, Japan  
E-mail: [global30@jimu.kyushu-u.ac.jp](mailto:global30@jimu.kyushu-u.ac.jp)



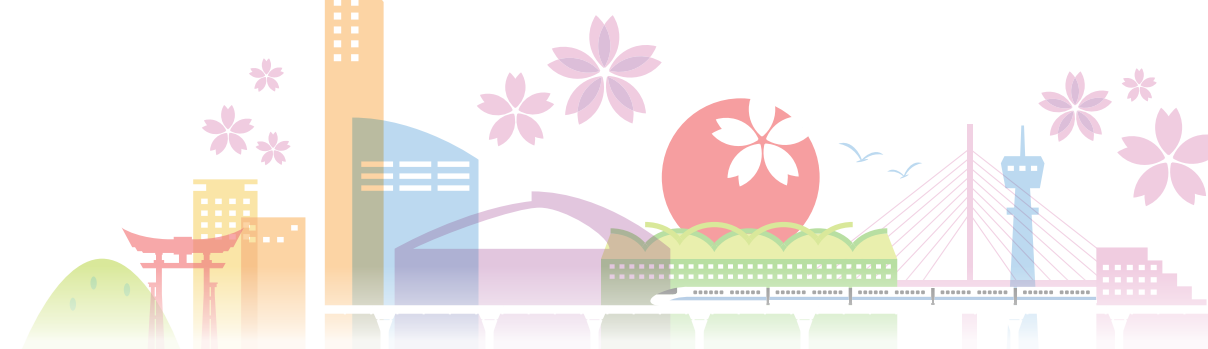
KYUSHU UNIVERSITY

2017

# INTERNATIONAL UNDERGRADUATE PROGRAM

*in English*

at the Department of  
Bioresource and Bioenvironment  
School of Agriculture



KYUSHU  
UNIVERSITY





# Welcome to



International Undergraduate Program in English  
Department of Bioresource and Bioenvironment  
Kyushu University, Japan

## CONTENTS

1: Kyushu University Overview	P.1~2
2: IUPE-International Undergraduate Program in English	P.3~4
3: Research Area	P.5~6
4: Admissions	P.7
5: Money Matters	P.8
6: Student Life	
1)Support System	P.9
2)Campus Life	P.10
3)Career and Study Options	P.11
4)FUKUOKA-The Home to Kyushu University	P.12
7: FAQs	P.13~14

## FOREWORD

### “Facing Global Challenges of the 21<sup>st</sup> Century”

Kyushu University, one of the top universities in Japan, has been a principal center for the education and research of bioresource and bioenvironment. Throughout our ninety-year old history, we have produced numerous topnotch graduates who have made a difference in people’s lives throughout the world. I am pleased to say that we can now make the fruits of a century of our education and research available to the wider public with the launch of the international undergraduate program in Bioresource and Bioenvironmental Sciences. As we enter the 21st century, the studies of bioresource and bioenvironment face an increasing number of issues, including the challenges of world population and food security; an increasing interest in safe and reliable foods; increased globalization of, and concerns about water, the environment, and energy. Our mission is therefore to accumulate the knowledge and wisdom required to answer these challenges through the study of life, water, the soil, forests, and the earth, and to share that knowledge, passing it on to future generations as a common asset of humankind in such a way that it can be used to provide an affluent coexistence for both humanity and the global environment at the same time. We need your fresh sensibilities and youthful energy. I sincerely hope that you will bring new light to our ninety-year tradition, and aim with us to create new knowledge at the Department of Bioresource and Bioenvironment.

Professor **Kazuaki Hiramatsu**  
Dean, Department of Bioresource and Bioenvironment,  
School of Agriculture



Kyushu University – one of the most prestigious institutions of higher education in Japan – now offers a whole range of degree-granting programs taught entirely in English!

# KYUSHU UNIVERSITY OVERVIEW

Founded in 1911 as one of Japan’s seven Imperial Universities, Kyushu University has established itself as a leader in education and research not just in Japan, but throughout Asia. Currently, it has a total student population of roughly 20,000 of which about 11% are international students, and its faculty boasts over 2,000 full-time members. Comprehensive in its academic reach, the university has over 12 undergraduate departments and 22 graduate schools, as well as their affiliated research centers. Kyushu University’s main strengths lie in its particularly active and innovative science programs, as is evidenced by the fact that it runs one of the most highly regarded and advanced medical schools in Asia.

We are now in the process of relocating to the state-of-the-art Ito Campus. When the move is completed, Kyushu University will be second to none in Asia in terms of research facilities and learning environment.

## History

1903	Founded as Fukuoka Medical College, an extension campus of Kyoto Imperial University
1911	Established as Kyushu Imperial University
1949	Reorganized into Kyushu University under National School Establishment Law
2003	Merged with Kyushu Institute of Design
2004	Became a National University Corporation
2011	Celebrated its first centennial

## Schools

School of Letters	School of Education	School of Law	School of Economics	School of Science	School of Medicine
School of Dentistry	School of Pharmaceutical Sciences	School of Engineering	School of Design	School of Agriculture	The 21st Century Program

## Graduate Schools and Faculties

Graduate School of Humanities, Faculty of Humanities	Graduate School of Integrated Sciences for Global Society, Faculty of Social and Cultural Studies	Graduate School of Human-Environment Studies, Faculty of Human-Environment Studies	Graduate School of Law, Faculty of Law	Graduate School of Economics, Faculty of Economics
Faculty of Languages and Cultures	Graduate School of Science, Faculty of Science	Graduate School of Mathematics, Faculty of Mathematics	Graduate School of Systems Life Sciences	Graduate School of Medical Sciences, Faculty of Medical Sciences
Graduate School of Dental Science, Faculty of Dental Science	Graduate School of Pharmaceutical Sciences, Faculty of Pharmaceutical Sciences	Graduate School of Engineering, Faculty of Engineering	Graduate School of Design, Faculty of Design	Graduate School of Information Science and Electrical Engineering, Faculty of Information Science and Electrical Engineering
Interdisciplinary Graduate School of Engineering Sciences, Faculty of Engineering Sciences	Graduate School of Bioresource and Bioenvironmental Sciences, Faculty of Agriculture	Graduate School of Integrated Frontier Sciences	Law School (Professional Graduate School)	Department of Clinical Psychology Practice, Graduate School of Human-Environment Studies
Kyushu University Business School-QBS	Department of Health Care Administration and Management, Graduate School of Medical Sciences			

## Kyushu University: Toward a Global Knowledge Center

In 2009, Kyushu University was chosen as one of the 13 universities for the G30 Project – a high-profile higher education project of the Japanese Government. The G30 Project is designed primarily to expedite the globalization of higher education in Japan, and to help achieve the admission of more than 300,000 international students to Japanese universities by 2020. Based on the government support, Kyushu University launched the G30 Project in 2010, with programs in the School of Engineering and the School of Agriculture. In 2014, we were granted another government-funded program called the Super Global University – the successor program after the G30 Project to further the internationalization of higher education in Japan. Kyushu University was chosen as one of the Type A universities, which is the category for universities conducting world-class education and research that have the potential to be ranked in the top 100 in the world. In addition to the existing graduate programs that have all been internationalized at Kyushu University, except for the School of Medicine and the School of Dentistry, all of our undergraduate programs will have English-based international programs in 2018. We recognize that our university is expected to be a global center of knowledge, to prosper together with Fukuoka City where it is based, and to keep growing so that Japanese citizens will take pride in us and foreign citizens will rely on us as one of the leading universities in the world.

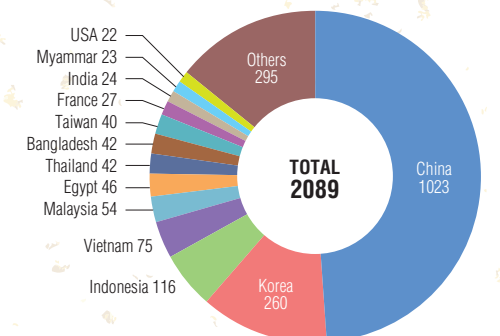


## How does Kyushu University fare in world university rankings?

With the increasing mobility of students worldwide, world university rankings are fast gaining popularity. But the rankings remain controversial. They are bound to yield higher scores for English speaking universities, as they evaluate research strength by using a database dealing only with English publications. The student faculty ratio is used to measure the quality of education, but there are lingering doubts about its efficacy as an indicator for educational strength. Factors like facilities for large-scale experiments, on the other hand, are barely taken into account. Having said that, however, world university rankings do provide interested parties with a first brief look at Kyushu University.

The QS rankings (2015/2016) rank Kyushu University 142th overall, just above University of Lausanne (Switzerland) and below Hokkaido University (Japan). In 2015, QS also rated us 29th in Asia, and 8th in Japan. According to Thomson Reuters (2015), Kyushu University is ranked 9th overall among all the universities in Japan.

Number of International Students (As of May 2016)



Total: 2089 (From 92 countries and regions)  
It's only natural, considering the long history of diplomatic relations and geographical proximity, that the majority of international students studying at Kyushu University are from Asia (84.9%). However, we also have many students from Europe (4.7%) and Africa (4.3%).



## BIORESOURCE AND BIOENVIRONMENT

<http://www.agr.kyushu-u.ac.jp/english/international/>

Anyone with a knowledge of English now has the opportunity to enroll with Kyushu University, and enjoy access to the knowledge and learning of our internationally renowned scholars without the difficulty of mastering Japanese. Currently, five undergraduate programs in English are on offer, including the Bioresource and Bioenvironment Program.

### WHY Kyushu University?

1 An English-based degree program!

2 A friendly instructor teaching in small-groups!

3 A new campus!

4 Exciting international social encounters!

5 A high-tech learning environment in Japan!

### What will I study?

This program will equip you with the scientific knowledge and skills necessary for understanding the production and application of bio-resources and the bio-environment that produces such resources. Those knowledge and skills include not only such basic natural science subjects as biology, chemistry and physics, but also cutting-edge biotechnology, economics and international relations. Through such rich and wide-ranging education and opportunities for research, the Bioresource and Bioenvironment program prepares you to become a professional with advanced knowledge and skills to contribute creative solutions to environmental problems.



### Four Year Timeline — Leading up to a Bachelor of Science degree



#### First 1.5 years

You will learn natural sciences (mathematics, chemistry, biology, physics, etc.) which should serve as a solid basis for subsequent studies, social sciences for greater understanding of global issues, and debate and presentation skills. You will also be given opportunities to study intensively Japanese and Japanese culture, such that you'll have a fuller life to enjoy in Japan.

#### Next 1.5 years

You will take more advanced natural science subjects such as microbiology, physiology, molecular biology, and biochemistry. You will also be given opportunities to engage in lab exercises and experiments in biology, chemistry, and physics, in addition to taking part in field trips. You will also be introduced to a range of cutting-edge research carried out at the Department of Bioresource and Bioenvironment by way of the laboratory rotation scheme.

#### Final year

Having earned nearly all the credits required to complete studies at Kyushu University, as well as selected your favorite laboratory from among approximately 60 laboratories through laboratory rotation, you will officially enter the laboratory of your choice. There, you will undertake your own research for your graduation thesis with help and advice from the professors and graduate students. You will end with the publication and oral defense of your research findings. Then finally you will be awarded your Bachelor of Science Degree!!

Over the course of four years, students are required to take over 126 credits (at least 50 credits in general education subjects and at least 76 credits in specialized subjects) toward successful completion of the Bioresource and Bioenvironment program. Students are expected to complete all or nearly all general education subjects in the first 1.5 years, and most specialized subjects in the next 1.5 years, with the last year left for laboratory work and a thesis writing.

### Examples of Class Schedule

Year 1 All students basically take a similar set of general education classes.

	Mon	Tue	Wed	Thu	Fri
1	Japanese I	Fundamental Cell Biology	(1)Introduction to Philosophy (2)Introduction to Law	Japanese I	Basic Laboratory Experiments in Natural Science
2	Japanese I		(1)Global Issues (2)Introduction to Psychology	Japanese I	
3	Basic Chemistry	Language and Communication in Society		Adjusting to Japan	Fundamentals of Mechanics A
4	Introduction to Japanese History	Core Seminar	Calculus A	Introduction to academic English	Introduction to Japanese Culture and Society
5	Introduction to Japanese History			Introduction to academic English (Tutorials to be arranged)	

Year 3 All students themselves decide which classes to take according to his/her specialty and interests.

	Mon	Tue	Wed	Thu	Fri
1	Bioorganic Chemistry		Food Science	Utilization of Animal and Marine Resource	Bio-Engineering
2	Plant Production and Physiology	Biomaterial Science	Forest Products Science	Molecular Biology	
3	Animal and Marine Life Science	Bioresource and Bioenvironment Experiments and Practice 3	Laboratory Rotation 2	Bioresource and Bioenvironment Experiments and Practice 4	
4					

### Subjects List

General Education Subjects  
(50 credits or more)

Subject Category	Minimum number of Credits Required
Japanese Culture and Society	4
Liberal Arts and Science	10
Social Practice	N
Language and Culture	20
Health and Sports Science	2
Fundamental Subjects for Natural Science	14
	<b>50</b>

Specialized Education Subjects  
(76 credits or more)

Subject Category	Minimum number of Credits Required	Subjects List
Common Basic Subjects	34	Core Seminar (2 cr.)
		Introductory Biochemistry (2 cr.)
		Information Processing and Practices (3 cr.)
		Elementary Economics (2 cr.)
		Elementary Statistics (2 cr.)
		Current Global Agricultural Issues (2 cr.)
		Agricultural Field Visit 1-2 (1 cr. each)
		Special Lecture on Advanced Topics of Agriculture 1-5 (2 cr. each)
		Bio-Engineering (2 cr.)
		Forest Management (2 cr.)
Specialized Subjects	12	Forest Products Science (2 cr.)
		Biomaterial Science (2 cr.)
		Animal and Marine Life Science (2 cr.)
		Environmental and Ecological Science for Animal Production (2 cr.)
		Utilization of Animal and Marine Resource (2 cr.)
		Food Science (2 cr.)
		Fieldwork on Bioresource and Bioenvironment 1-2 (1 cr. each)
Fieldwork Practice Subjects	6	Bioresource and Bioenvironment Experiments and Practice 1-4 (1 cr. each)
Tutorial	4	Introduction to Bioresource and Bioenvironmental Sciences 1-2 (2 cr. each)
Laboratory Subjects	4	Laboratory Rotation 1-2 (2 cr. each)
Technical Communication	6	Technical Communication 1-3 (2 cr. each)
Thesis	10	Seminar and Exercise Related to Graduation Thesis (2 cr.)
	<b>76</b>	Graduation Thesis (8 cr.)




### Message from faculty

Dr. Douglas Drummond, Professor Promotive Center of International Education and Research of Agriculture



The use of natural resources often poses complex problems that extend beyond purely scientific issues to include concerns about sustainability, environmental and economic impacts. Addressing such issues requires both specialized knowledge and an appreciation of their wider context. The International Undergraduate Program in Bioresource and Bioenvironment is therefore multidisciplinary, introducing students to both natural and social sciences, to provide a wide range of knowledge and skills. Students can then specialize in (1) Bioresource Production, Engineering, and Economics; (2) Applied Biosciences and Biotechnology; (3) Animal Resources or (4) Forestry and Forest products and carry out a research project guided by a member of staff in the faculty of Agriculture. The diverse expertise of the staff offers a wide choice of research topics including crop science, marine science, animal science, forestry, environmental science and engineering, molecular bioscience and biotechnology, food science, bioresource and bioenvironmental economics, policy and management. The program staff are from Asia and Europe and have experience of studying, researching and teaching internationally. The course is taught entirely in English and the small class sizes ensure students receive individual attention. We believe this course produces graduates who can then move on to work or advanced studies in an international environment, equipped to meet the challenges of today's world.



**STUDENT VOICE**   
**Chunmei Zou** <China>  
 Graduated in 2016  
 The 3<sup>rd</sup> generation of IUPE student

Four years ago I was confused about my future path, and as a city girl I was ignorant about plants and agriculture. I did not imagine that after four years studying in Kyushu University I would now pursue a masters degree in plant breeding and devote myself entirely to this field. During my academic years in Kyushu University, various subjects and courses in agriculture broadened my horizon: Ecology amazes me with the integrated relationship between organisms and their environment; Biology inspires me to look at a common organism through the mixed perspectives of the cellular, microscopic and chemical levels; Philosophy alerts me to approach science with constant critical reflection on fundamental logic and morals. Along with academic knowledge, I was also taken on tours to see various sectors of agriculture in real production sites, such as food factories, breweries, local farms and markets. These experiences really inspired me to take part-time jobs and enjoy internships at Japanese flower companies and farms, and to join my lab of Horticultural Science. Financially, the MEXT (Ministry of Education, Culture, Sports, Science and Technology) and Kyushu University scholarship greatly supported me covering tuition fees and life expenses. I was also funded to join an international conference, where I presented my own research. More importantly, Kyushu University instilled me with a consciousness of my language ability and an open attitude. Enrolled under IUPE (International Undergraduate Program in English), I made friends with people of different colors and backgrounds, and their friendship constantly teaches me the importance of global communication and cooperation. If you are a passionate learner, your dreams will be fully and kindly supported by all the professors and staff. I am sure you will also find a fantastic life experience here in Japan at Kyushu University!





# 3 Research Area

International Undergraduate Program at the Department of Bioresource and Bioenvironment

## Category A Bioresource Production, Engineering and Economics

### Applied Botany and Zoology

This area is primarily concerned with scientific analysis of the life phenomena of bioresource organisms from the viewpoint of heredity, environment, and interrelations among organisms, so as to contribute to the resolution of global environmental issues. In our laboratories, students conduct research on edible crops such as rice and beans; garden crops such as vegetables and flowers; and bioproduction-related microorganisms, including phytopathogens, and various insects. Each laboratory seeks the improvement of productivity and product quality, the biological control of pests, the development of biological pesticides and methods of using natural enemies, and the discovery and utilization of new functions hidden in living creatures. Responding to the remarkable progress of the life sciences, we are engaged in education and research that makes good use of gene expression control and tissue cultures.



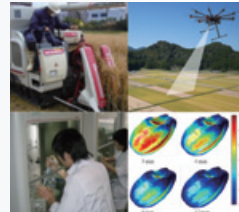
### Bioenvironmental Engineering

Establishing a bioproduction foundation is the basic target of this special area. We conduct research and education aimed at improving bioresource output and creating affluent rural areas through the utilization, control and preservation of the natural environment, and creation of new technologies. This area covers an extensive array of subjects, including those that involve soil, water, living creatures, weather, and our society. Our research goal is to explore the best ways to optimize these vast systems. To this end, we have established a uniquely broad academic system that covers both basic and applied fields. This comprehensive approach to academics and engineering allows us to play an important role in fulfilling the increasingly diversified needs of society.



### Bioproduction System Engineering

In this area, research will be conducted in pursuit of the improvement of productivity and product quality, centering on the mechanization and systematization of each product cycle process, from bioresource production to distribution. This means that we work toward the development of machines related to crop cultivation as the primary step of bioproduction, technologies that boost productivity, improvements in processing, storage, and distribution technologies, as well as improved safety and systemization for the handling of produced crops. Beyond this, we are making solid inroads in the pursuit of human safety and comfort, as well as in robotization and automation. On the utilization and management sides, improvements in efficiency using the system engineering approach are being achieved.



### Bioresource and Bioenvironmental Economics

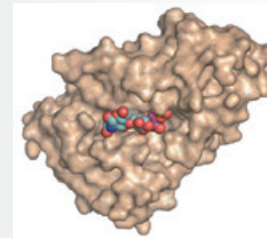
Bioresource and Bioenvironmental economics covers the socioeconomic issues involved in the international food system, mainly in Asia, to contribute to the stable supply of safe food and to the environmentally sustainable development of domestic and foreign food industries and regional economies. Attaining these objectives requires not only basic knowledge of bioresource and bioenvironmental economics, but also knowledge of natural science and technological knowledge of food, the environment, and rural economies as well as an international sensibility. Therefore, students are required to complete basic subjects in natural sciences and technological sciences and to nurture an international awareness through close exchanges with students and researchers from Asia, Europe, and America. In this way, they can obtain sufficient knowledge in both natural sciences and technological sciences in addition to social sciences.



## Category B Applied Biosciences and Biotechnology

### Molecular Biology and Biotechnology

This research area is geared to nurture students to understand structure-function relationships of biomolecules involved in various biochemical reactions. Students can opt to engage in research in a wide range of molecular biosciences, including organic chemistry, biochemistry, cell biology, gene technology, bio-energy, genetic engineering and many others. We conduct research and study that seeks to clarify the various life phenomena engaged-in by living creatures, chemically breaking down the structures and functions of the diverse substances they produce and analyzing the interaction between the creatures and their environment from a physical standpoint. We use this knowledge to enhance our own primary and secondary production processes and ultimately aim to contribute to the welfare and prosperity of humankind.



### Food Science and Technology

This research area carries the banner for bioscience based on life science and its technologies. Therefore, the kind of study we shall engage in is not just a parallel of biology, chemistry, and engineering, but rather a truly interdisciplinary domain that unifies these three subjects. Our research and education involve: (1) the advanced utilization of the functions of food materials and their by-products, the conversion of unused resources into food, and the development of new bioresources; (2) confirming the safety, quality and nutritional status of secondary and tertiary products of food; (3) clarifying the physical, chemical, and biochemical changes that occur in the production processes and their controls; and (4) the principles of food processing, related machinery, and the biological treatment of organic waste products.



## Category C Animal Resources

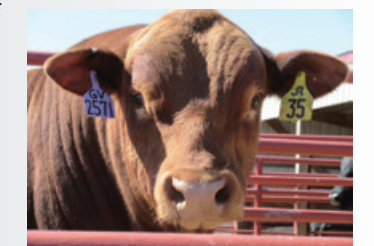
### Aquatic Biosciences

With growing populations and increased food demands in the world, fishery resources have a vital role to play in the supply of bioresources. Aquatic organisms living in marine and freshwater environments are important bioresources providing not only food but also unique compounds that can be used as medical and industrial materials for human welfare and environmental conservation. Studies in aquatic biosciences will include advanced lectures and various field and laboratory activities in marine biosciences and biotechnology to produce experts on fisheries and related biosciences.



### Animal Science

Animal science provides methods of production of high-quality protein sources, including milk, meat, and eggs, originating from domestic animals. Although the remarkable increase in the world's population requires the effective production of animal products, sustainable production in harmony with the environment is also essential. This research area comprises anatomy, physiology, biochemistry, and biotechnology of domestic and wild animals, aiming at optimized utilization of animal resources, development of animal food processing, evaluation of feed resources, and animal protection.



## Category D Forestry and Forest Products

### Forest Environmental and Management Sciences

Seeking to achieve the preservation of the global environment and the sustainable production of forest resources, this study area covers a wide range of research topics, including preservation of the natural environment and land; elucidation of forest functions to prevent natural disasters; the development of new technologies related to measurements of forest resources; and optimization of the policies related to forest management that harmonize wood productivity, public interest, and the natural environment.



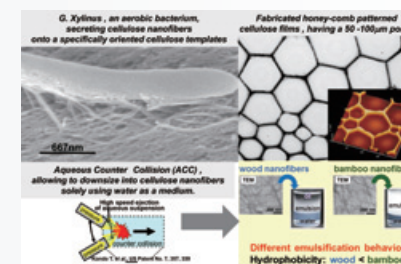
### Forest Bioscience

In this special area, extensive research and education are conducted on subjects ranging from the molecular and material to the ecological level, all aimed at actively developing the various functions of forest creatures and their complex environment for new applications, preserving and restoring the global environment, and making optimal use of forest resources in harmony with nature. Students concentrating on this area will acquire expertise in forest function development science, which comprises silviculture, plant metabolism control science, ligneous resource science, and its peripheral domains.



### Biomaterial Science

This special area covers research on the advanced use of biomaterials, especially wood products. The research topics include advanced physical and chemical utilization of forest bioresources and highly organized engineering of forest-related environmental issues. All of this research is done with the goal of realizing the coexistence of an affluent society with the preservation of the global environment, thus requiring the wide-ranging education we offer. Students concentrating on this area will be able to choose from an array of lectures, experiments, practices, and exercises to further develop their expertise in biomaterial function science and its peripheral domains.



## Kyushu University taking on challenges in global agriculture: Global-scale problems that we currently face

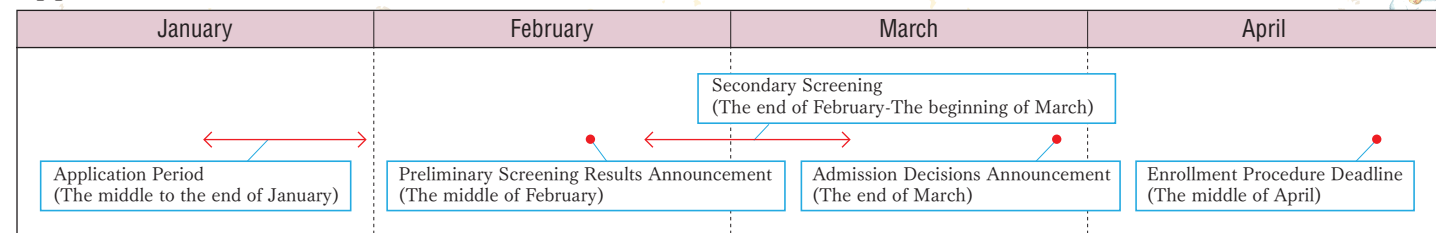




# 4 Admissions

Applications will be accepted during the following period as shown in the table below. Only one application will be allowed in any given year. The evaluation process for the International Undergraduate Program consists of two screenings: preliminary and secondary. The preliminary screening is based on a comprehensive evaluation of the documents submitted. The secondary screening will include an interview, a review of submitted documents, and (in some cases) a written test.

## Applications Timetable



## Application Documents

1. Application Form
  2. Receipt of application fee payment (10,000 yen)  
(For telegraphic transfer payment only)
  3. Identification document
  4. Official high school transcripts
  5. (Expected) Graduation certificate
  6. Score reports of ONE of the following:
    - (1) SAT Subject Tests
    - (2) GCE A/AS level (or IAL-A/AS Level)
    - (3) International Baccalaureate (taken in English)
    - (4) International Baccalaureate (taken in French or Spanish) and an English proficiency test\*
    - (5) EJU and an English proficiency test\*
    - (6) College Scholastic Ability Test of South Korea and an English proficiency test\*
    - (7) General Scholastic Ability Test of Taiwan and an English proficiency test\*
    - (8) (Only for those who reside in the People's Republic of China) An English proficiency test\*
- \* Choose one from TOEFL, TOEIC, IELTS, or Cambridge ESOL Examination.



For further details, please visit  
<http://www.kyushu-u.ac.jp/en/admission/faculty/foreign/foreign10/>

# 5 Money Matters

## Tuition and Enrollment Fee

All students of the international undergraduate programs will be entitled to an exemption of half the tuition fee for the first year. From the second year on, a maximum of 30 students with a GPA of 2.5 or higher from the previous year will receive the half fee exemption.

(Unit: Japanese Yen)

Fees	Amount
One Time Enrollment Fee (payment period: March 30 - April 19, 2017)	282,000
Tuition Fee for Autumn 2017 (amount after exemption)	133,950
Tuition Fee for Spring 2018 (amount after exemption)	133,950
<b>Total Payment for Autumn 2017 - Spring 2018</b>	<b>549,900</b>

Note:  
 ① The tuition fee listed above is subject to change without prior notice. New fees will be applied if changed.  
 ② The above fees do not include health insurance, alumni association fee, books, etc.

## Scholarship

### Japanese Government (MONBUKAGAKUSHO: MEXT) Scholarship

A few successful applicants in the International Undergraduate Programs who meet the eligibility criteria set by the MEXT may apply for this scholarship.

### Kyushu University International Undergraduate Scholarship

Up to 2 successful applicants (excluding MEXT Scholarship recipients) may receive this scholarship each year. The recipients will be evaluated at the end of each year and only the top 2 students with a GPA of 3.0 or higher from the year will receive this scholarship for the next year.

### Other Scholarships

Various scholarship opportunities are granted by private foundations, international associations, and local governments.

Eligibility	A few successful applicants with outstanding screening results are eligible to apply.
Duration, amount of monthly allowance and other benefits	<ul style="list-style-type: none"> <li>• Four years with 117,000 yen per month</li> <li>• Exemption of the enrollment fee and the tuition fee (for four years)</li> <li>• Airline tickets are provided for you to come to Japan for enrollment and to go back to your country after graduation.</li> </ul>
Screening	Kyushu University will select a few out of all successful applicants and recommend them to the MEXT after contacting them individually.

Note:  
 The information above is for the admission 2016.  
[http://www.mext.go.jp/component/a\\_menu/education/detail/\\_icsFiles/afieldfile/2015/04/23/1357038\\_02.pdf](http://www.mext.go.jp/component/a_menu/education/detail/_icsFiles/afieldfile/2015/04/23/1357038_02.pdf)  
 (Ref. For the admission 2016)

The details can be changed for the admission 2017.  
<http://www.kyushu-u.ac.jp/en/admission/faculty/foreign/foreign10/>

Eligibility	All applicants are eligible to apply for the scholarship.
Amount of monthly allowance	60,000 yen per month

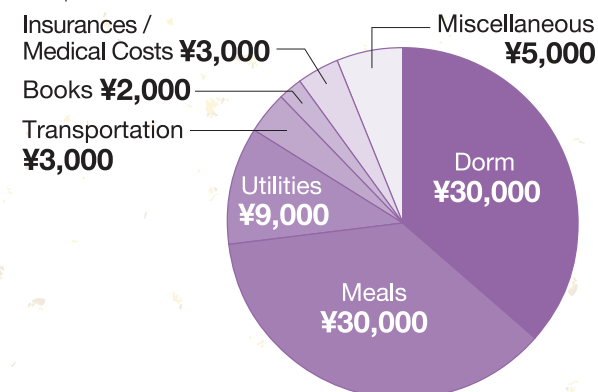
For more information about other scholarships, please visit:  
<http://www.isc.kyushu-u.ac.jp/intlweb/en/admission/scholarship-information>

## Living Expenses

Due to lower consumer prices, living expenses are relatively low in Fukuoka compared to other major cities like Tokyo and Osaka. How much you will need will vary, depending on your personal taste and circumstances, but you should be prepared to spend between 80,000 yen and 120,000 yen per month.

### Monthly Expenses Incurred by International Students at Kyushu University

¥=Japanese Yen

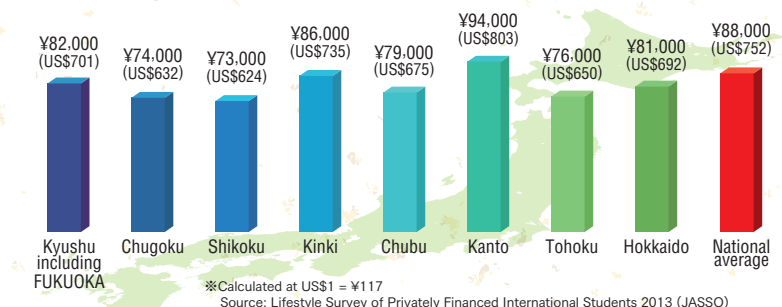


### Average Monthly Living Expenses By Region

¥=Japanese Yen  
 (as of 2013)

National Average: ¥88,000

The average monthly expenses (excluding academic fees) of an international student are shown below. The cost of living in metropolitan areas is higher than in rural areas.





# 6 Student Life

## 1. SUPPORT SYSTEM

### Academic Supporters

The international Undergraduate Program has three coordinators entrusted with the role of helping you with any aspect of college life. You may seek their guidance and counseling not only on academic matters but also on anything that could affect your learning environment. You may also take supplementary tutoring sessions offered by a team of graduate students (“academic supporters”) if you have difficulty understanding the classes or need help in writing papers. They can also give you advice on a number of issues, ranging from preparation for exams to future careers, from the vantage point of senior students.



### Student Supporters

A support team consisting of our current students, both Japanese and non-Japanese, will be assigned to the participants in the International Undergraduate Program. This team will be your guide to the new environment and will help you adjust to life in Japan. They will pick you up at the airport upon your arrival, show you around the campus and the city, take you shopping, help you complete registrations at local government offices, introduce you to friends and teachers, and help you learn basic Japanese. While the support team serves as a community of your personal advisors, the International Student and Researcher Support Center, with a branch office on each of our five campuses, offers professional support when needed. Equipped with English-speaking staff, the Center will come to your rescue when you need to prepare and submit documents to public offices such as the Immigration Bureau, or when you want to rent an apartment, etc.

### Housing

Kyushu University has dormitories on the Ito Campus as well as around the other campuses, fully-furnished with facilities necessary to make your college life safe, easy, and comfortable. The participants in the International Undergraduate Program are guaranteed a room in one of these dorms for 1.5 years until they get accustomed to life in Japan. After that, the University will help you find a place to live, perhaps a private apartment close to your campus, and help you through all the renting procedures. We do all we can to ensure that you can focus on studying without any hassles.



### Emergency Secure Plan (ESP)

International students who are enrolled in Kyushu University are required to join the ESP and pay the membership fee.

#### ESP Consists of Two Services

##### 1) Medical Assistance Service

24 hours Trilingual Medical Assistance (Chinese, English, and Japanese)

Services include	<ul style="list-style-type: none"> <li>•Reference to an appropriate, nearby medical facility</li> <li>•Interpretation at a medical facility via three-way conference call</li> <li>•Emergency Services: Contacting and assisting family members in your home county</li> </ul>
------------------	--

##### 2) Emergency Expense Insurance

Coverage includes	<ul style="list-style-type: none"> <li>•Emergency reunion (up to 3 persons)</li> <li>•Rescue</li> <li>•Interpretation:, etc.</li> </ul>
-------------------	---

#### Premium & Payment Method

Pay the fee (1,000 yen/year) with the remittance form given to you by Kyushu University

## 2. CAMPUS LIFE

On Ito and other campuses, you will find restaurants, takeouts, convenience stores, book shops, and banking facilities.

### Clubs

Currently, there are well over 170 clubs at Kyushu University. They cover a variety of fields, ranging from anime to tea ceremony and from football to hang gliding. Some of these clubs have come to be known outside Japan through their participation in international competitions. Take part in these clubs and activities, make friends, and broaden your horizons!

### Some of our popular clubs

- |                |                          |                     |
|----------------|--------------------------|---------------------|
| ▶ Aikido       | ▶ Horseback Riding       | ▶ Photography       |
| ▶ Anime        | ▶ Jazz                   | ▶ Rugby             |
| ▶ Baseball     | ▶ Karate                 | ▶ Sci-Fi            |
| ▶ Basketball   | ▶ Kendo                  | ▶ Soccer            |
| ▶ Brass Band   | ▶ Manga                  | ▶ Sumo              |
| ▶ Choir        | ▶ Philharmonic Orchestra | ▶ Tea Ceremony      |
| ▶ Hang Gliding | ▶ Mandolin               | ▶ Theater and Drama |



### Join the Circle!

QULE ~ (Q) Kyushu University Language Exchange ~  
International Exchange Circle, Faculty of Agriculture



<Vietnam>

**Bui Thai Canh**

Senior student (2016.10)  
The 4th generation of IUPE student

#### To gain Lifelong Friends Living across the World

Having the sudden freedom of jumping into college life in a totally different country is quite worrisome to many people but it will not be the case when you come to Kyushu University. This will be the place where facing new differences means excitement, curiosity, and fun. For me, having the chance to frequently interact and communicate with people from many cultures and especially with the Japanese, is simply the best. They intrigue me by showing how differently things are valued compared to the values in my home country. From my own experience, I would like to introduce QULE, a circle that gathers awesome Japanese and international students. We very often organize a wide range of activities, from hosting a mini-games day, a language exchange to having a BBQ party or even being off-campus to Japanese Izakayas. Through this you would gain very important benefits of quality relationships: to feel at home, to learn new things, to have fun, and most importantly, to be taken care of since we will always be at your back whenever you need us.



### Join the Committee!

SCIkyu ~ Student Committee for the Internationalization of Kyushu University ~  
International Committee



<Korea>

**Hee Yung Woo**

Junior student (2016.10)  
The 5th generation of IUPE student

#### To contribute for internationalization in Kyushu University

SCIkyu (Student Committee for the Internationalization of Kyushu University) is an official committee initiated in 2011 by Kyushu University, comprising Japanese students, international students, and a few teaching and non-teaching staff, whose aim is to help foster the internationalization drive of Kyushu University from various perspectives. We have been working to develop new systems on campus through various projects throughout the years in order to create an internationalized and synergized environment for better education. As a student-oriented organization with members from many countries, we are able to think of diverse ideas from different points of view. While internationalization in Kyushu University is progressing very slowly, its small visible changes are very exciting to see and experience.

<http://www.scikyu.com/>

<https://www.facebook.com/SCIkyu>



## Message from the Head of IUPE Course



**Dr. Masahiro Okamoto** Distinguished professor, Faculty of Agriculture

Have you ever been to Japan? Have you ever studied abroad? If you answered “no” to these questions, you will most likely feel apprehensive about pursuing a degree in Japan.

With close to 2,000 international students, we offer a broad range of support services to take care of our students. The “support team” – where a group of senior students both Japanese and non-Japanese is assigned to assist international students on and off campus – is one of the most highly valuable services that we provide. If you are having difficulties adjusting to your new life, please make use of our counseling system. Academic Coordinators of your program will also be standing by to help you with all aspects of your academic life. We work hard to make the environment as comfortable as possible for our international students so that they can study without feeling uneasy and enjoy their lives in Fukuoka to the fullest extent.



### 3. CAREER AND STUDY OPTIONS

There are many Japanese firms out there that are keen on hiring international students who can bring new ideas and dimensions to their business. Each year, Kyushu University hosts several career fairs so that those students interested in getting a job here and those firms looking to have international students on their pay roll have a chance to meet one another. We also offer workshops, where you will learn how to make an appointment with Japanese firms, how to present yourself effectively in a job interview, and how to make use of business expressions. Each year, we receive over 200 employment offers that international students can apply for. We would like you to make the most of these opportunities to develop your career to your utmost potential.

Career Options

National and Local Governments; Research Institutions; Educational Institutions; Food Companies; Agricultural Chemicals Companies; Construction Companies; Weather Consultants; Materials Companies; Banks; Trading Companies; Beverage Manufacturers; Chemicals Companies; Pharmaceutical Companies; Paper-manufacturing Companies; Printing Companies etc.

A significant number of our graduates also proceed to graduate schools for higher studies.

Working for a Japanese company

MC food specialties, for researching and discovering new commodities

Li, Yuchen <China>

Graduated in September 2014  
The 1st generation of IUPE student

Graduate School of Bioresource and Bioenvironmental Sciences, Kyushu University  
Food Process Engineering

As food is indispensable in our life, which also relates to the healthier lifestyle of human beings, I decided to study food science and aimed at making safe and nutritious food in the future. As the technique of food science is very advanced in Japan, I applied for the International Undergraduate Program.

The campus life was very interesting. It is amazing to know many people from different countries and areas, and we were together not only during classes, but for many other activities such as the foreign student soccer tournament, and going for trips together.

When working, I want to make some new commodities that customers desire. Meanwhile, I will learn the advanced techniques and the food safety management system here and try to spread high quality foods to the world and make a contribution to the eating habits of people all over the world.

Study Abroad

Study in the United States!

Ph.D. program in Bioengineering, University of Illinois Urbana-Champaign

Li, Tianyi <China>

Graduated in September 2015  
The 2nd generation of IUPE student

Hi, my name is Helen Tianyi Li. After graduation from IUPE, I am currently studying in the Ph.D. program in Bioengineering, at University of Illinois Urbana-Champaign. Four years of study at Kyushu University was the best experience ever. I love the beautiful city and friendly people in Fukuoka. I appreciate IUPE in the way that it is trying to provide us with the best academic resources and also a welcoming atmosphere. Here, I met professors who not only lead us to be good researchers but also good persons. Here, I learned lessons from not only classes but also all kinds of interesting extra-curriculum activities. I became good friends with Japanese students and also international students from all over the world. I was very much exposed to Japanese culture and also given a global vision. Also, one of the best things about the IUPE in Department of Bioresource and Bioenvironment is that you choose the specific area of study in the third year. This privilege could give you a broad perspective on many bio-related fields, and you get to do what you are really interested in.

Study Abroad

Study in Japan!

International Development Research Course, Graduate School of Bioresource and Bioenvironmental Sciences, Kyushu University  
Laboratory of Crop Science

Chetphilin Suriyasak

Graduated in September 2015 <Thailand>  
The 2nd generation of IUPE student

When I knew that Kyushu University offered an international undergraduate course, I was very excited because I have been very interested in plants and biological science. Moreover, I am personally into Japanese culture and studying in Japan was one of my dreams.

When I first came here, everything was new, exciting, and difficult at the same time. However, I had classmates from many different countries all over the world and we really had a great time.

Last year, I obtained my undergraduate degree from laboratory of crop science, Bioresource Science department. My research was about the effects of heat stress on rice grain quality in molecular and hormonal levels. This research received an award as the best presentation representing Kyushu University at the International Conference of Undergraduate Research (ICUR). As I developed a strong interest in my current research, I decided to continue my degree at the same laboratory, Crop Science. Being here, I am able to improve experimental skills together with language skills in both English and Japanese.

Finally, I really enjoy my life here in Japan, in Kyushu University every day and every moment. Although I have a hard time when experiments do not go well, I am really lucky to have cheerful and supportive people surrounding me like my professors and my lab friends. I will finish my master's degree next year, 2017. If you ask me, where will I continue my Ph.D., I would say, "obviously, Kyushu University."

### 4. FUKUOKA – THE HOME TO KYUSHU UNIVERSITY

#### "Well-balanced" Fukuoka

Fukuoka, the home to Kyushu University, is the biggest city in Kyushu, with a population of over 1.5 million. The trip from Tokyo to Fukuoka takes only 90 minutes by plane and over 5 hours by Shinkansen train. With a mild climate (the average temperature of 28.1°C in August and of 7.4°C in February), Fukuoka is said to be one of the most comfortable cities to live in Asia. If one had to express many of its appeals in one word, that would be "well-balanced." While the streets of Tenjin, the commercial center of the city, are lined with modern buildings and department stores, there is abundant nature at the seaside and in the mountains, both located in the suburbs, and numerous cultural and historical buildings such as temples and shrines. With a moderate population, an urban district existing in harmony with nature, and convenient transportation facilities, including the airport, Fukuoka has the right balance of various elements.

#### "Multicultural" Fukuoka

Fukuoka has served as a gateway to Asia both geographically and historically, and is brimming with a dynamic and cosmopolitan atmosphere. There are abundant information sources for visitors from overseas, including free English publications, an FM radio station broadcast in various languages, and street signs in four languages, as well as shops selling foods from abroad, so international students have few difficulties



living in Fukuoka. The city is receptive of other cultures, as is evidenced by the establishment of the first mosque in Kyushu. Many Asian-themed events are held throughout the year, and you can easily engage in friendships with people from other Asian countries while living in Japan.



In addition, Fukuoka is known as a city of vitality both at home and abroad. In 2016, Fukuoka ranks 7th most liveable city in Monocle's annual Quality of Life Survey

- 2016 Ranking
01. Tokyo (Japan)

02. Berlin

03. Vienna

04. Copenhagen

05. Munich

06. Melbourne

07. Fukuoka (Japan)

08. Sydney

09. Kyoto (Japan)

10. Stockholm

Population increase by number (among designated cities)	1 <sup>st</sup>	Rate of population increase (among designated cities)	1 <sup>st</sup>
Ratio of young population (ages 15-19)	1 <sup>st</sup>	Number of international students (among designated cities)	2 <sup>nd</sup>
Percentage of students by number (in higher education; among 21 major cities)	2 <sup>nd</sup>	Business startup rate (among 21 major cities)	1 <sup>st</sup>
Lowest food cost (among 51 cities)	1 <sup>st</sup>	Lowest rent (among 16 cities)	3 <sup>rd</sup>
Best tasting cuisine (among designated cities)	2 <sup>nd</sup>	Number of visitors to summer festivals (e.g., Hakata Gion Yamakasa)	3.5 million





# 7 FAQs

## Admissions

### Q. What are the application requirements for the International Undergraduate Program (2017) at Kyushu University?

A. First, you must have a nationality other than Japanese. Second, you have or will have completed a 12-year school curriculum outside Japan by September 30, 2017. For details, see <http://www.kyushu-u.ac.jp/en/admission/faculty/foreign/foreign10/>

### Q. May I apply for more than one undergraduate program at Kyushu University?

A. No. You can apply for only one undergraduate program at a time.

### Q. How do I get an application form?

A. You can download the form from the website below. <http://www.kyushu-u.ac.jp/en/admission/faculty/foreign/foreign10/>

### Q. I am currently studying at a university in my country. Could I transfer to Kyushu University, and start from where I left off?

A. No. We regret that, at the moment, we would not accept any transfer students. In order to enroll with us, you will have to go through the normal screening process, and start from the very beginning.

### Q. If I were accepted by Kyushu University, would I be able to transfer the credits earned at my current university?

A. No. Our International Undergraduate Program does not recognize credits earned at other institutions.

### Q. How does Kyushu University decide whom to admit?

A. The decision will be made in two stages: (1) evaluation of submitted documents; and (2) interviews (plus written exams in some cases).

### Q. I live far away from Japan. Will you be able to come to my country for my interview?

A. We are willing to send our admission team to wherever successful candidates may reside. Due to budgetary and time constraints, however, we cannot carry out an on-site interview in just about any country and region there is. In case we cannot conduct an on-site interview, or we judge it appropriate, we may resort to a Skype interview instead. Alternatively, we may ask the candidates to travel to Japan or a third country for the second screening. In such cases, all the expenses incurred during their travel will

have to be borne by the applicants. We also advise you to insure yourself for any unforeseen events, as we will not accept liability for damages of any kind resulting from your participation in the interview.

### Q. How many students are admitted to the International Undergraduate Program annually?

A. For 2015-2016, we admitted 6 students in Bioresource and Bioenvironment and 17 in Engineering. For 2016-2017, we expect to welcome 5 new students in Bioresource and Bioenvironment and 23 in Engineering.

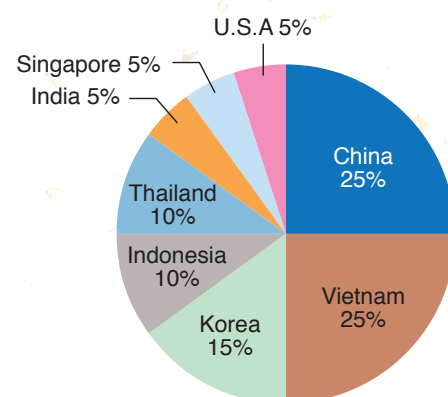
### Q. What if I have questions about the application process? Whom should I contact?

A. Contact the Admission Division of the Student Affairs Department at [nyu-inquiry@jimu.kyushu-u.ac.jp](mailto:nyu-inquiry@jimu.kyushu-u.ac.jp)

### Q. What are the nationalities of current participants in the International Undergraduate Program?

A. Our current students – classes of 2012 through 2015 combined – come from the following countries and regions (Numbers in parentheses indicate those of current students): China(5); Vietnam(5); Korea(3); Indonesia(2); Thailand(2); India(1); Singapore(1); U.S.A(1)

Nationalities of current participants (2012~2015)



## Academics

### Q. May I enroll in the International Undergraduate Program just for a semester or two as a non-degree student?

A. At the moment, we do not accept any non-degree students. If you are interested in studying at Kyushu University for a short length of time, we suggest that you check out several short-term programs that the University's International Department offers. The programs, all taught in English, are suited particularly for those interested in Japanese and Asian studies, and their lengths range from 6 weeks to 1 year. For more information, please visit:

<http://www.isc.kyushu-u.ac.jp/intlweb/en/admission>

### Q. May I take classes offered in Japanese if I want?

A. Provided that you have a high level of proficiency in Japanese, you may either audit, or take for credits, classes offered in Japanese. You should note, however, that the credits earned will not count toward your graduation requirement.

### Q. What's Kyushu University's school calendar like in terms of vacation?

A. For 2016, vacations are scheduled as follows:

Spring Recess: April 1, 2016 ~ April 11, 2016

Summer Recess: August 9, 2016 ~ September 30, 2016

Winter Recess: December 27, 2016 ~ January 4, 2017

### Academic Calendar

2016			2017								
10	11	12	1	2	3	4	5	6	7	8	9
Fall Semester Begins <i>Early Oct.</i>			Fall Semester Ends <i>Mar.31</i>			Spring Semester Begins <i>Apr.1</i>			Spring Semester Ends <i>Early Aug</i>		
Freshman Orientation <i>Early Oct.</i>			Winter Recess <i>The end of Dec. to beginning of Jan.</i>			Final Exams <i>Late Jan. to Early Feb.</i>			Summer Recess <i>Early Aug. to Late Sep.</i>		
University Festival <i>Middle of Nov.</i>									Final Exams <i>Late Jul. to Early Aug.</i>		
									Commencement <i>The end of September</i>		
Autumn Semester						Spring Semester					

## Life in Japan

### Q. Is it possible to survive without knowing a single word of Japanese?

A. Our International Undergraduate Program does not assume any familiarity with the Japanese language on the part of its participants. All classes are taught in English with the exception of Japanese Language classes, and you can also receive academic counseling and other services in English. However, there is no doubt that life in Japan will be a great deal more fun if you can speak a bit of the language. We have compulsory Japanese language classes built in to our curriculum. By learning the language, you may not only take advantage of staying in Japan, but also add greatly to your market value particularly if you are keen on pursuing your career in Asia. The International Student Center also offers extra Japanese lessons for free for those who wish to learn more. E-learning resources are also available for those who want to learn at their own pace. Enjoy learning Japanese and make the most of your life in Japan!

### Q. Isn't it hard to find a decent place to live? Even if it wasn't, wouldn't it be rather expensive?

A. Even in Japan, it is possible to find decent accommodation at a reasonable price. But a newcomer would find it difficult to hit on the right place to live without a little bit of luck and some guidance from the more experienced. To make your life easy, we will guarantee each and every participant in the International Undergraduate program a single room in the Ito International Dorm for the first year and a half. The monthly rent will be between 23,000 yen and 30,000 yen. All rooms will be furnished with a private kitchen, bathroom, bed, desk and chair, air conditioner, refrigerator, closet, and a bookshelf.

### Q. What if I want to work in Japan after I graduate?

A. For most jobs in Japan, you will need business level Japanese to be considered a viable candidate at all. Although we cannot guarantee to land you the job you want (no one can), we will do our utmost to help you by offering career workshops and business Japanese lessons, sponsoring career fairs, inviting corporate speakers, and providing internship opportunities.

### Q. May I work part-time?

A. The Japanese Government allows international students to work up to 28 hours per week, provided that you secure permission from the Immigration Bureau. The students in the International Undergraduate Program will also have to obtain special permission from his/her admitting School and the University, as the class schedule is so tight that it may not be easy for you to set aside time for a part time job.

### Q. Do you think a Muslim can live in Fukuoka?

A. Yes, there are already many Muslim students and residents in Fukuoka. Also many restaurants and shops, including on campus, provide halal food. Furthermore, we have a mosque in the city center, so you can meet other Muslim friends and pray with them. Fukuoka is a "Muslim-friendly" city.

