

## Major Contacts

### Undergraduate Admissions

General Inquiries	iuadmse@info.keio.ac.jp
PEARL(Programme in Economics for Alliances, Research and Leadership)	pearl_admissions@info.keio.ac.jp
GIGA(Global Information and Governance Academic) Program	sfc-global@sfc.keio.ac.jp

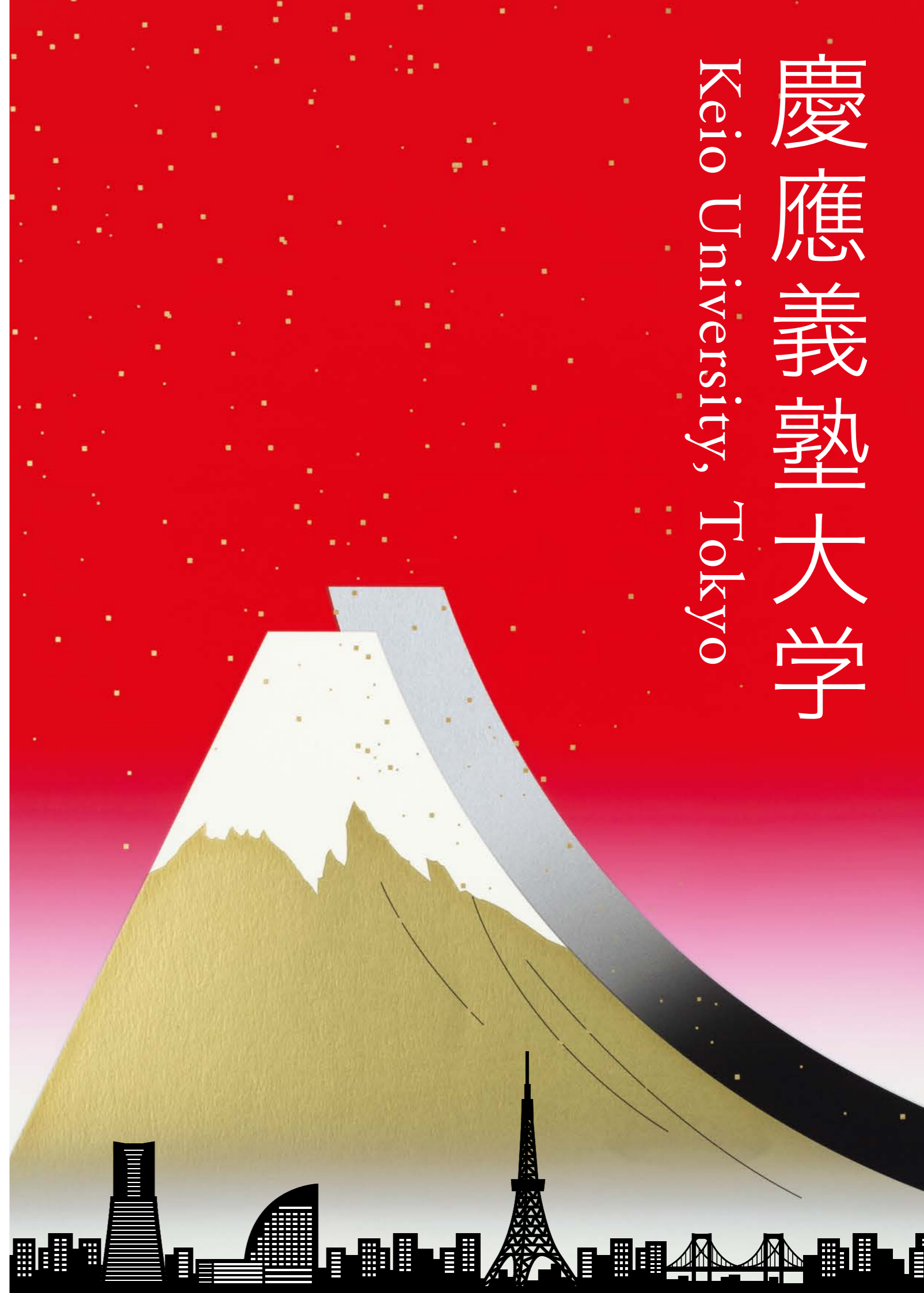
### Graduate Admissions

Graduate School of Letters, Economics, Law, Human Relations, Business & Commerce	grad-admission@info.keio.ac.jp
Graduate School of Medicine	medgrad@info.keio.ac.jp
Graduate School of Science & Technology	ao_st_inquiry@info.keio.ac.jp
Graduate School of Business Administration	gakukbs@info.keio.ac.jp
Graduate School of Media & Governance	gao-request@sfc.keio.ac.jp
Graduate School of Health Management	nmc-hm@adst.keio.ac.jp
Graduate School of System Design and Management	sdm@info.keio.ac.jp
Graduate School of Media Design	kmd@info.keio.ac.jp
Graduate School of Pharmaceutical Sciences	skcdaigakuin@info.keio.ac.jp
Law School	ls_admissions@info.keio.ac.jp

Japanese Language Program	jlpinquiry@info.keio.ac.jp
---------------------------	----------------------------

**Key Contacts** | <https://www.keio.ac.jp/en/contact-us/>  
**FAQ** | <https://www.keio.ac.jp/en/admissions/faq.html>

慶應義塾大学  
Keio University, Tokyo



# What's Keio?



**From a modestly-sized institution of higher education  
which supported Japan's modernization to one of  
the foremost research universities globally**

「独立自尊」

**A place of learning which blossomed on the ideals of self-respect  
and independence of mind and then turned its gaze to the world beyond**

Yūkichi Fukuzawa, a self-made entrepreneur opened a school of Dutch studies for scholarship with an international perspective in Edo-period Tokyo (1858) to foster individuals with the ability to take responsibility for their own learning by thinking for themselves and remaining unswayed by the changes of the era. This was the starting point of Keio University.

「実学の精神」

**The wellspring of jitsugaku, the “spirit of practical science,” in Japan**

Fukuzawa, whose keen sense of the necessity to modernize Japan's education system was inspired by his travels in Europe and the United States, pioneered the establishment of an educational environment founded on a spirit of practical science which he christened jitsugaku. In this way, Keio University became the epoch-making institution which lit the way forward for Japan some 160 years ago, proposing perspectives which encouraged the “scientific thinking” that would become foundational to the modern global society.

「半学半教」

**Hangaku hankyo - producing leaders who have supported modernization in a multitude of fields  
through human bonds created in a spirit of mutual teaching and learning between teachers and pupils**

The fair and egalitarian ideal of hangaku hankyo, which emphasizes having no essential distance between teachers and students and merely distinguishes between “those who have learned” and “those who have yet to learn,” has helped produce many leaders in every field of human endeavor, with an emphasis on those in industry. It has facilitated massive contributions to Japan's modernization.

「自我作古」

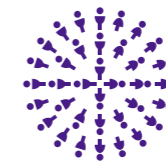
**A research university engaged in finding solutions to global-level problems  
by mobilizing the philosophy of jiga sakko: “creating history to define the future”**

Jiga sakko is an expression which captures the essence of a fearless commitment to engage with new domains and unexplored fields in order to both create new precedents and reveal new ways forward. As one of the foremost research universities in Japan, which has expanded to include 10 undergraduate faculties and 14 graduate schools, Keio remains locked in daily battle with challenges in education, research, and medicine to solve global-scale problems.

## Keio's Assets



Keio University: Japan's era-leading and oldest private university. Scholarship which has always kept an eye on the global outlook.



**380,000+**

Over 380,000 alumni active on the world stage in every field and discipline. The powerful bonds and strong networks among fellow alumni are Keio's greatest assets.



**9th**

One of the most consistently highly-rated universities among employers, Keio University achieved 9th place worldwide in the Times Higher Education's Alma Mater Index: Global Executives 2013 which ranks universities according to the number of graduates going on to become CEOs of top global companies.

\*Times Higher Education's Alma Mater Index: Global Executives 2013

## Keio's Achievements



### 1st: Grants-in-Aid for Scientific Research (private university)

Recipient of governmental research funding of over 3.2 billion yen, the largest scale funding for a private university in Japan (AY 2016).

### 1st: Number of female faculty members

279 full-time female faculty members, the highest number of any university in Japan (AY 2016).

### 1st: Certified public accountant and bar examinations

Keio placed first for the number of students or graduates passing the certified public accountant examination and bar examination with 157 and 144 persons passing each respectively in AY 2017.

### 1st: CEOs of companies listed on the Tokyo Stock Exchange

Ranked first in Japan with 180 of the CEOs of companies listed on the First Section of the Tokyo Stock Exchange having graduated from Keio (April 2018).

### 1st: Japanese private university, World University Rankings

Keio captured the top spot in the QS World University Rankings 2019 for Japanese private universities.

### 1st: Japanese private university, Japan University Rankings

Keio took the prime position among Japanese private universities for 2018 in the THE World University Rankings (Japanese edition).

## Top Global University Project

Keio University was selected for the Japanese government's Top Global University Project as a Top Type (Type A) leading Japanese university conducting global-level research and education

At Keio University, we are currently engaged in advanced transdisciplinary and internationally-oriented education and research focused on the three integrated liberal arts and science initiatives of Longevity, Security, and Creativity, the outcomes of which are being disseminated and facilitating global contributions.

### Longevity

Initiative to realize a society where people live better, longer lives

### Security

Initiative to assure a safer, more sustainable society

### Creativity

Initiative to bolster innovation in education and research





## Studying in Japan. Living in Tokyo.


Unique traditions and the abundant natural scenes of the four seasons coexist in harmony with cutting-edge technologies shaping the future. Keio University can be found in a prime location in the singular global megalopolis of Tokyo, which was chosen as the second best city in the world as a location for overseas study in the QS Best Student Cities Ranking 2019. This is a city to which young people are inexorably drawn and a place where information and trends are created and spread. Traditional events such as festivals go hand-in-hand with burgeoning cultural trends and happenings. It is also a place where you will encounter generous and warm-hearted people. This is topped off by an enchanting food scene. Culinary traditions from throughout the world come together in Tokyo, with pride of place being taken up by Japanese *washoku* cuisine, now registered as a UNESCO intangible cultural property. Among the many surprises which surely await you here are one of the busiest intersections in the world where up to 3,000 people can cross at any one time, and a network of train lines which has all the appearance of a labyrinth. Studying at Keio means living in Tokyo. Now is the time to experience your fill of Tokyo's many charms.

# International Programs at Keio University to cultivate the global leaders of the future

Keio conducts about 1,000 classes in English and offers and increasing number of English-based degree programs.

Degree Programs Offered in English		
Undergraduate	Economics	• PEARL (Programme in Economics for Alliances, Research and Leadership)
	Policy Management Environment and Information Studies	• GIGA (Global Information and Governance Academic) Program
	Economics	• Master's and Doctoral Programs
	Business and Commerce	• Joint Japan/World Bank Graduate Scholarship Program in Taxation Policy and Management
Postgraduate	Medicine	• Doctoral Program
	Science and Technology	• International Graduate Programs on Advanced Science and Technology • Global Environmental System Leaders Course
	Media and Governance	• International Advanced Degrees Course • Environmental Innovators Course • Global Environmental System Leaders Course
	Health Management	• Doctoral Program
	System Design and Management	• System Design and Management Course
	Media Design	• Master's and Doctoral Programs      • Global Innovation Design Program
	Law School	• Master of Laws (LL.M.) in Global Legal Practice

Double Degree Programs			
Undergraduate	Double Degree Programme	• Sciences Po (France)	• Bocconi University (Italy)
	Economics BA/MA Five Year Programme	• Sciences Po (France)	• Brandeis University (U.S.A)
		• Bocconi University (Italy)	• HEC Paris (France) *PEARL students only
Postgraduate	Business and Commerce	• ESSEC Business School (France)	• Peking University (China)
	Economics	• CEMS MIM (Master's in International Management)	
		• Brandeis University (U.S.A)	
	Human Relations	• University of South Australia (Australia)	
	Business and Commerce	• CEMS MIM (Master's in International Management)	
	Science and Technology	• Ecole Centrale Group (Lille, Lyon, Marseille,Nantes, CentraleSupélec) (France)	• RWTH Aachen University (Germany)
		• Université catholique de Louvain (Belgium)	• Technische Universität München (Germany)
		• Université libre de Bruxelles (ULB) (Belgium)	• Politecnico di Milano (Italy)
		• IÉSEG School of Management (France)	• Universidad Politécnica de Madrid (UPM) (Spain)
		• Institut Mines-Telecom (France)	• KTH Royal Institute of Technology (Sweden)
		• MINES Paris Tech (France)	• Lund University (Sweden)
		• Leibniz Universität Hannover (Germany)	
	Business Administration (Keio Business School)	• ESSEC Business School (France)	• WHU Otto Beisheim School of Management (Germany)
	Media and Governance	• Fudan University (China)	• Yonsei University (I) (Korea)
		• Institut Teknologi Bandung, Gadjah Mada University, and Brawijaya University (Linkage Program)(Indonesia)	• Yonsei University (II) (Korea)
	Media Design	• CEMS MIM (Master's in International Management)	
	Law School	• University of Washington School of Law (U.S.A.)	

Non Degree Program	
 Non Degree Program	Japanese Language Program (JLP)
■ Acquire advanced technical proficiency in Japanese alongside the skills to become one of the “Japan hands” of the future	
■ A range of class levels available to study the Japanese language and Japan	
■ Design the curriculum aligned to your Japanese proficiency level	

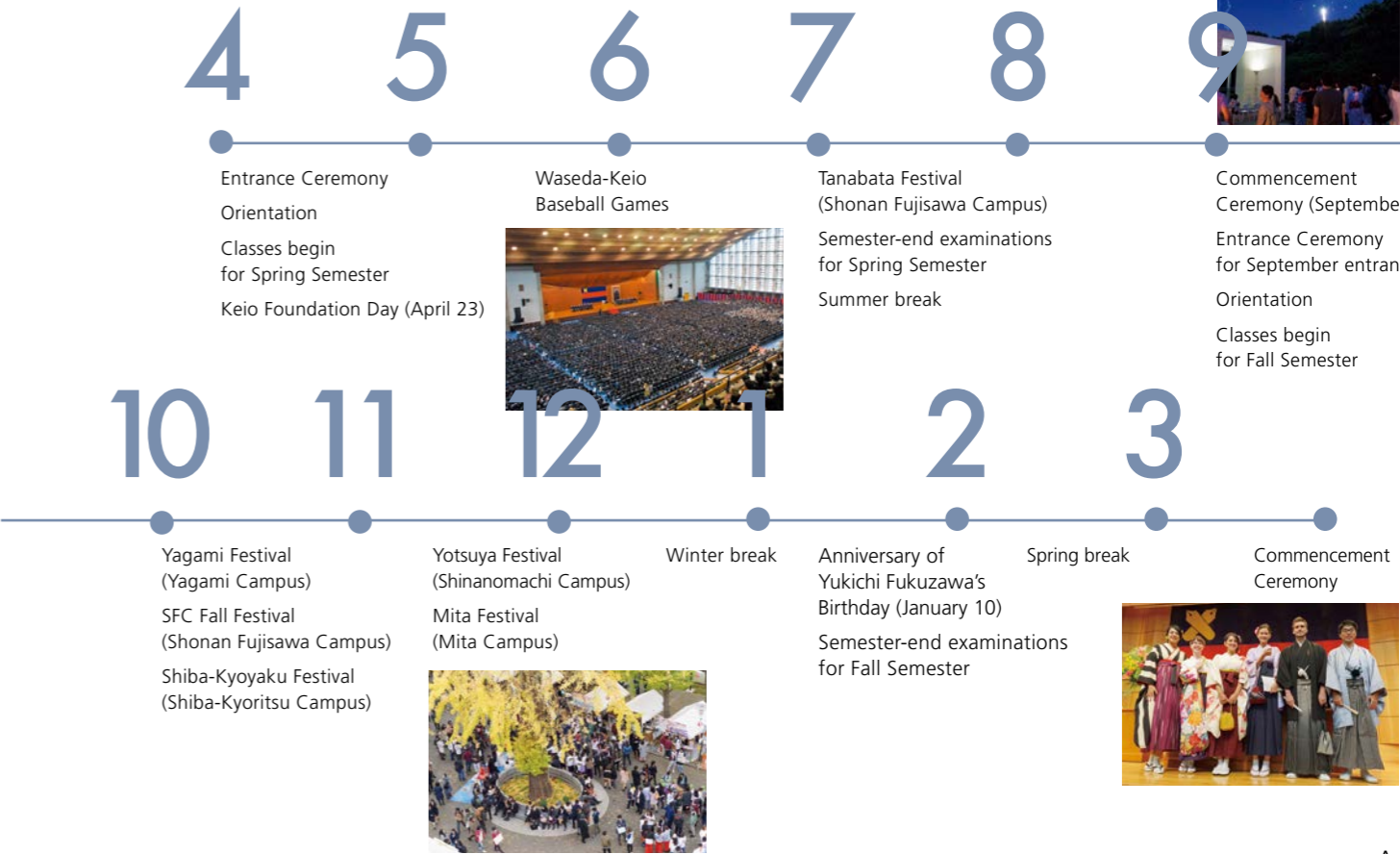
Short-Term Programs	
Non Degree Program	Keio Summer Program
	■ A two-month program (June – July) to study and experience life in Japan ■ Offers opportunities to take Keio's credit-bearing courses while studying side by side with Keio students ■ Suitable for undergraduate students
Short-Term Programs	Keio Short-Term Japanese Studies Program (KJSP)
	■ A two-week intensive program to better understand Japanese society and culture ■ International students study side by side with Keio students who also take part in the program ■ Suitable for undergraduate and graduate students who are new to Japan and its language ■ For students of Keio's student-exchange partner universities and APRU member universities
Thesis@Keio	
■ Provides valuable opportunities to build an international academic network ■ Supports aspiring researchers from overseas in deepening their knowledge ■ For a period of 7-89 days ■ For graduate students enrolled in overseas universities	

As of April 2020

## A year at Keio

In Japan, the academic year usually starts in April and ends in March the following year. (It may vary depending on the faculty/graduate school, and some students matriculate and graduate in September.)

Spring Semester	Early April-Late September	Summer Break	Late July-Late September
Fall Semester	Late September-Late March	Winter Break	Late December-Early January
		Spring Break	Early February-Late March





Japanese Archery Club

## Rewarding activities at one of the many clubs and circles, with like-minded friends



American Football Team



Takenokai Japanese Instruments Society



Sailing Team



Piano Club



Cricket Club

\*Number of official student clubs: about 470

## Learning at Keio University creates a boundless future



Graduate School of Science and Technology (doctoral program)

Romain David (from France)

### A familiar and broad network that elevates your research

After studying at the École Centrale de Lille for two years, I enrolled in the master's program at Keio University for two years through a double degree program. I chose to study in Japan because I wanted to study outside Europe and in a non-English-speaking country, and I was very interested in studying in a new environment with a completely different culture. I was highly motivated to go to Japan, which I think was a factor that helped me pass the difficult selection process.

Here at Keio, the students are close with the professors and there is a family-like bond between everyone in the laboratory. I am good friends with the other students in my laboratory and we have fun together every day. I hope to continue studying here for at least three more years to get my PhD. Because of Keio's broad network, my own network has also expanded, and as a result, I believe that my research will develop into something more meaningful.

### Growth through tea ceremony

I chose to study at Keio University because of the all-English programs and because I could get a scholarship. In addition, I was particularly interested in studying at Shonan Fujisawa Campus (SFC) where I heard from a senior student that the professors there, some who are well-known, are truly passionate teachers. I was able to apply to the program from overseas and I think it's great how you can submit a self-introductory video instead of an interview. This helped me properly convey my thoughts and enthusiasm for wanting to study at SFC.

I am making progress with my research in my major field, architecture, and I am learning a lot in the tea ceremony club. In the beginning, I couldn't speak any Japanese, but with the help of my friends, by the time of the university festival, I was able to serve tea to the guests. Now, I am looking forward to getting a tea ceremony qualification, which can be gotten after practicing it for four years. At Keio, you have to be proactive and find opportunities for yourself. However, by doing this, you will meet so many different people and I think these are the most valuable life experiences.



Faculty of Environment and Information Studies  
GIGA (Global Information and Governance Academic) Program

Izzatur Wulansari (from Indonesia)



From tradition to innovation,  
rich and diverse range of learning opportunities showcases  
the strengths of Keio as a comprehensive university

Bachelor’s Program

Faculty of Letters

- Department of Humanities and Social Science
  - Major in Philosophy: Bachelor of Arts in Philosophy
  - Major in Ethics: Bachelor of Arts in Philosophy
  - Major in Aesthetics and Science of Arts:
    - Bachelor of Arts in Philosophy
  - Major in Japanese History: Bachelor of Arts in History
  - Major in Asian History: Bachelor of Arts in History
  - Major in Western History: Bachelor of Arts in History
  - Major in Archaeology and Ethnology: Bachelor of Arts in History
  - Major in Japanese Literature: Bachelor of Arts in Literature
  - Major in Chinese Literature: Bachelor of Arts in Literature
  - Major in English and American Literature:
    - Bachelor of Arts in Literature
  - Major in German Literature: Bachelor of Arts in Literature
  - Major in French Literature: Bachelor of Arts in Literature
  - Major in Library and Information Science:
    - Bachelor of Arts in Library and Information Science
  - Major in Sociology: Bachelor of Arts in Human Relations
  - Major in Psychology: Bachelor of Arts in Human Relations
  - Major in Education: Bachelor of Arts in Human Relations
  - Major in Human Sciences: Bachelor of Arts in Human Relations

Faculty of Economics

- Bachelor of Arts in Economics

Faculty of Law

- Department of Law: Bachelor of Laws
- Department of Political Science: Bachelor of Laws

Faculty of Business and Commerce

- Bachelor of Arts in Business and Commerce

School of Medicine

- Doctor of Medicine

Faculty of Science and Technology

- Department of Mechanical Engineering: Bachelor of Engineering
- Department of Electronics and Electrical Engineering:
  - Bachelor of Engineering
- Department of Applied Chemistry: Bachelor of Engineering
- Department of Applied Physics and Physico-Informatics:
  - Bachelor of Engineering
- Department of Industrial and Systems Engineering: Bachelor of Engineering
- Department of Mathematics
  - Major in Mathematics: Bachelor of Science
  - Major in Statistics: Bachelor of Engineering
- Department of Physics: Bachelor of Science
- Department of Chemistry: Bachelor of Science
- Department of System Design Engineering: Bachelor of Engineering
- Department of Information and Computer Science:
  - Bachelor of Engineering
- Department of Biosciences and Informatics:
  - Bachelor of Science or Bachelor of Engineering

Faculty of Policy Management

- Bachelor of Arts in Policy Management

Faculty of Environment and Information Studies

- Bachelor of Arts in Environment and Information Studies

Faculty of Nursing and Medical Care

- Bachelor of Science in Nursing

Faculty of Pharmacy

- Department of Pharmacy: Bachelor of Pharmacy
- Department of Pharmaceutical Sciences:
  - Bachelor of Pharmaceutical Sciences

Degree programs delivered in English

- PEARL (Programme in Economics for Alliances, Research and Leadership)
- GIGA (Global Information and Governance Academic) Program

Master’s Program

Graduate School of Letters

- Major in Philosophy and Ethics: Master of Arts in Philosophy
- Major in Aesthetics and Science of Arts:
  - Master of Arts in Philosophy
- Major in History: Master of Arts in History
- Major in Japanese Literature: Master of Arts in Literature or Master of Arts in Japanese Language Education
- Major in Chinese Literature: Master of Arts in Literature
- Major in English and American Literature:
  - Master of Arts in Literature
- Major in German Literature: Master of Arts in Literature
- Major in French Literature: Master of Arts in Literature
- Major in Library and Information Science:
  - Master of Arts in Library and Information Science

Graduate School of Economics

- Master of Arts in Economics

Graduate School of Law

- Major in Civil Law: Master of Laws
- Major in Public Law: Master of Laws
- Major in Political Science: Master of Laws, Master of Public Policy, or Master of Journalism

Graduate School of Human Relations

- Major in Sociology: Master of Arts in Sociology
- Major in Psychology: Master of Arts in Psychology
- Major in Education: Master of Arts in Education

Graduate School of Business and Commerce

- Master of Arts in Business and Commerce

Graduate School of Medicine

- Master of Medical Sciences

Degree programs delivered in English

- ... Master's and Ph.D. Programs
- ... Joint Japan/World Bank Graduate Scholarship Program in Taxation Policy and Management
- ... Ph.D. Program
- ... International Graduate Programs on Advanced Science and Technology
- ... International Advanced Degrees Course
- ... Environmental Innovators Course

Graduate School of Science and Technology

- School of Fundamental Science and Technology:
  - Master of Science or Master of Science in Engineering
- School of Integrated Design Engineering:
  - Master of Science or Master of Science in Engineering
- School of Science for Open and Environmental Systems:
  - Master of Science in Engineering

Graduate School of Business Administration

- Master of Business Administration (M.B.A.)

Graduate School of Media and Governance

- Major in Media and Governance:
  - Master of Media and Governance

Graduate School of Health Management

- Major in Nursing:
  - Master of Science in Nursing
- Major in Public Health, Sport and Health Sciences:
  - Master of Public Health,
  - Master of Science in Health Care Management,
  - or Master of Science in Sports Management

Graduate School of System Design and Management

- Major in System Design and Management:
  - Master of System Engineering
  - or Master of System Design and Management

Graduate School of Media Design

- Major in Media Design: Master of Media Design

Graduate School of Pharmaceutical Sciences

- Major in Pharmaceutical Sciences:
  - Master of Pharmaceutical Sciences

... Global Environmental System Leaders Course

... System Design and Management Course

... Graduate School of Media Design

... Master of Laws(LL.M.) in Global Legal Practice

... Graduate School of Health Management

Doctoral Program

Graduate School of Letters

- Major in Philosophy and Ethics: Ph.D. in Philosophy
- Major in Aesthetics and Science of Arts: Ph.D. in Philosophy
- Major in History: Ph.D. in History
- Major in Japanese Literature: Ph.D. in Literature
- Major in Chinese Literature: Ph.D. in Literature
- Major in English and American Literature: Ph.D. in Literature
- Major in German Literature: Ph.D. in Literature
- Major in French Literature: Ph.D. in Literature
- Major in Library and Information Science:
  - Ph.D. in Library and Information Science

Graduate School of Economics

- Ph.D. in Economics

Graduate School of Law

- Major in Civil Law: Doctor of the Science of Law
- Major in Public Law: Doctor of the Science of Law
- Major in Political Science: Doctor of the Science of Law

Graduate School of Human Relations

- Major in Sociology: Ph.D. in Sociology
- Major in Psychology: Ph.D. in Psychology
- Major in Education: Ph.D. in Education

Graduate School of Business and Commerce

- Ph.D. in Business and Commerce

Graduate School of Medicine

- Medical Science Program: Ph.D. in Medicine
- Applied Medicine Program: Ph.D. in Medicine

Graduate School of Science and Technology

- School of Fundamental Science and Technology:
  - Ph.D. in Science or Ph.D. in Engineering
- School of Integrated Design Engineering:
  - Ph.D. in Science or Ph.D. in Engineering
- School of Science for Open and Environmental Systems:
  - Ph.D. in Engineering

Graduate School of Business Administration

- Ph.D. in Business Administration

Graduate School of Media and Governance

- Major in Media and Governance:
  - Ph.D. in Media and Governance

Graduate School of Health Management

- Major in Nursing:
  - Ph.D. in Nursing
- Major in Public Health, Sport and Health Sciences:
  - Ph.D. in Public Health,
  - Ph.D. in Health Care Management,
  - or Ph.D. in Sports Management

Graduate School of System Design and Management

- Major in System Design and Management:
  - Ph.D. in System Engineering
  - or Ph.D. in System Design and Management

Graduate School of Media Design

- Major in Media Design: Ph.D. in Media Design

Graduate School of Pharmaceutical Sciences

- Major in Pharmaceutical Sciences:
  - Ph.D. in Pharmaceutical Sciences
- Major in Pharmacy: Ph.D. in Pharmacy

Professional Degree Program

Law School

- Major in Legal Practice: Juris Doctor
- Master of Laws (LL.M.) in Global Legal Practice:
  - Master of Laws (LL.M.)

As of April 2020

Shonan Fujisawa Campus (SFC)

5322 Endo, Fujisawa, Kanagawa  
Undergraduate Faculties:  
Policy Management, Environment  
and Information Studies,  
and Nursing and Medical Care  
(Years 1, 2, and 4)  
Graduate Schools:  
Media and Governance,  
and Health Management



Mita Campus

2-15-45 Mita, Minato-ku, Tokyo  
Undergraduate Faculties:  
Letters(Years2-4),  
Economics, Law,  
and Business and Commerce  
(Years 3 and 4)  
Graduate Schools:  
Letters, Economics, Law,  
Human Relations,  
Business and Commerce,  
and the Law School



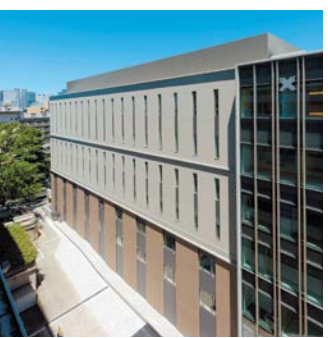
Hiyoshi Campus

4-1-1 Hiyoshi, Kohoku-ku, Yokohama, Kanagawa  
Undergraduate Faculties:  
Letters, Pharmacy,  
and the School of Medicine (Year 1)  
Economics, Law, Business and Commerce,  
and Science and Technology (Years 1 and 2)  
Graduate Schools:  
Business Administration,  
System Design and Management, and Media Design



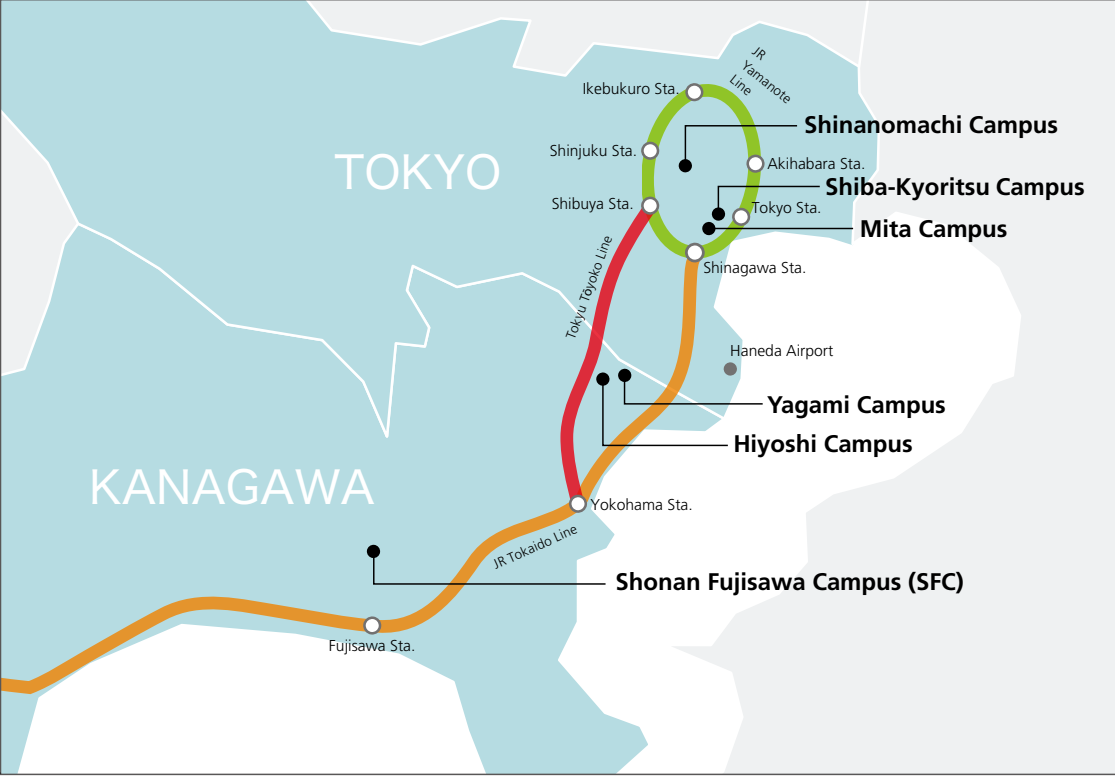
Shinanomachi Campus

35 Shinanomachi,  
Shinjuku-ku, Tokyo  
Undergraduate Faculties:  
School of Medicine (Years 2-6),  
Nursing and Medical Care (Year 3)  
Graduate School:  
Medicine



Yagami Campus

3-14-1 Hiyoshi, Kohoku-ku,  
Yokohama, Kanagawa  
Undergraduate Faculty:  
Science and Technology (Years 3 and 4)  
Graduate School:  
Science and Technology



Shiba-Kyoritsu Campus

1-5-30 Shibakoen, Minato-ku, Tokyo  
Undergraduate Faculty:  
Pharmacy (Years 2-4 or 2-6)  
Graduate School:  
Pharmaceutical Sciences



# Ensuring peace of mind when you arrive in Japan

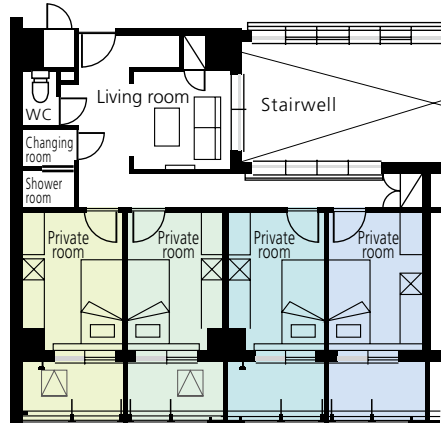
## Experience the comforts of everyday life at the student dormitories

Hiyoshi International Dormitory



- Dormitory rooms with 4 persons per unit, made up of 2 Japanese students and 2 students from overseas
- Each unit has 4 private rooms and communal areas comprising a living room, shower room, toilet and wash basin
- With ample space in which to interact with other students including the communal kitchen and Assembly Room

Floor plan

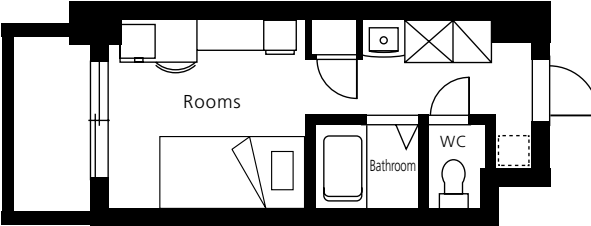


Tsunashima Student Dormitory



- All single rooms, fully equipped with amenities, including a wash basin and bathroom ventilation fan
- Lifestyle support by the dormitory heads and their spouses who also live in the facilities
- We proudly supply safe and delicious evening meals and breakfast












Floor plan



List of dormitories

Keio University offers international students a range of housing, which vary in location, cost, and terms and conditions. Since there is a set number of available rooms in the dormitories, not all applicants will be able to get a room if there are too many applications. Renting private accommodation is another option for students. As it is not common to share a room or a house in Japan, most students who choose to do so rent a single room. Please refer to the website below for further information about student housing.

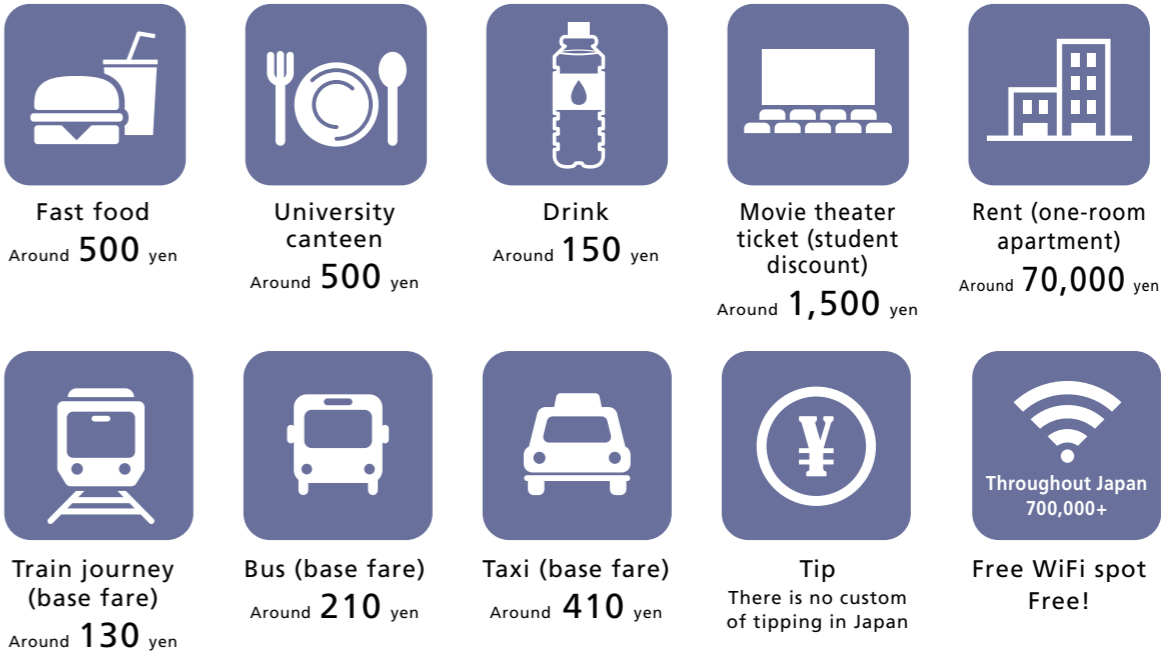
[http://www.ic.keio.ac.jp/en/life/housing/ryu\\_boshu.html](http://www.ic.keio.ac.jp/en/life/housing/ryu_boshu.html)

Dormitory	Japanese students also resident	Includes meals	Room types (single/unit)	
 <b>Shimoda Student Village</b> 148 rooms 2-59-7 Hiyoshihoncho, Kohoku-ku, Yokohama, Kanagawa (MAP 1)	●		SINGLE	<div>Cleaning and maintenance fee ¥20,000</div> <div>Lodging fee</div> <div>Approx. ¥63,500 per month</div>
 <b>Plume IS</b> 50 rooms 12-28 Yagami, Saiwai-ku, Kawasaki, Kanagawa (MAP 2)			SINGLE	<div>Cleaning and maintenance fee ¥20,000</div> <div>Lodging fee</div> <div>Approx. ¥68,300 per month</div>
 <b>Omori Student Dormitory</b> 127 rooms 7-4-27 Omori Nishi, Ota-ku, Tokyo (MAP 3)	●	●	SINGLE	<div>Cleaning and maintenance fee ¥20,000</div> <div>Lodging fee</div> <div>Approx. ¥68,000 per month</div>
 <b>Tsunashima Student Dormitory</b> 124 rooms 2-18-3 Tsunashima Nishi, Kohoku-ku, Yokohama, Kanagawa (MAP 4)	●	●	SINGLE	<div>Cleaning and maintenance fee ¥20,000</div> <div>Lodging fee</div> <div>Approx. ¥78,000 per month</div>
 <b>Motosumiyoshi Residence</b> 230 rooms 4-31-8 Kizuki, Nakahara-ku, Kawasaki, Kanagawa (MAP 5)	●		SINGLE	<div>Cleaning and maintenance fee ¥20,000</div> <div>Lodging fee</div> <div>Approx. ¥64,000 per month</div>
 <b>Okurayama Dormitory</b> 76 rooms 4-4-6 Tarumachi, Kohoku-ku, Yokohama, Kanagawa (MAP 6)			SINGLE	<div>Cleaning and maintenance fee ¥20,000</div> <div>Lodging fee</div> <div>Approx. ¥55,000 per month</div>
 <b>Hiyoshi International Dormitory</b> 200 rooms (4X50 units) 5-11-18 Hiyoshi, Kohoku-ku, Yokohama, Kanagawa (MAP 7)	●		UNIT	<div>Cleaning and maintenance fee ¥20,000</div> <div>Lodging fee</div> <div>Approx. ¥72,000 per month</div>
 <b>Motosumiyoshi International Dormitory</b> 156 rooms 22-1 Sumiyoshi-cho, Kizuki, Nakahara-ku, Kawasaki, Kanagawa (MAP 8)	●		SINGLE	<div>Cleaning and maintenance fee ¥20,000</div> <div>Lodging fee</div> <div>Approx. ¥75,700 per month</div>
 <b>Tsunashima SST International Dormitory</b> 163 rooms 4-3-10 Tsunashima Higashi, Kohoku-ku, Yokohama, Kanagawa (MAP 9)	●		SINGLE	<div>Cleaning and maintenance fee ¥20,000</div> <div>Lodging fee</div> <div>Approx. ¥78,400 per month</div>
 <b>Shonan Fujisawa International Dormitory</b> 109 rooms 6701-1 Endo, Fujisawa, Kanagawa (MAP 10)	●	●	SINGLE	<div>Cleaning and maintenance fee ¥20,000</div> <div>Lodging fee</div> <div>Approx. ¥64,500 per month</div>
 <b>Takanawa International Dormitory</b> 44 rooms 2-12-35 Takanawa, Minato-ku, Tokyo (MAP 11)	●		SINGLE	<div>Cleaning and maintenance fee ¥20,000</div> <div>Lodging fee</div> <div>TBD</div>

Student Dormitory Map



Cost of living in Tokyo



The currency of Japan is the Japanese yen (¥) . There are various denominations such as the three paper notes of 10,000 yen, 5,000 yen, and 1,000 yen and the 500 yen, 100 yen, 50 yen, 10 yen, 5 yen, and 1 yen coins. While cash payments are standard practice in Japan, credit cards are accepted in many stores and it has recently become possible to shop using IC cards, even in convenience stores, in addition to their use on public transport.

Tuition

https://www.keio.ac.jp/en/admissions/fees/

Tuition (2021 academic year)

Undergraduate			(\$1=¥110)*	
Faculty/School		JP Yen	US\$	
Letters		¥1,140,000	\$10,364	
Economics		¥1,140,000	\$10,364	
Law		¥1,150,000	\$10,455	
Business and Commerce		¥1,140,000	\$10,364	
Medicine		¥3,640,000	\$33,091	
Science and Technology		¥1,660,000	\$15,091	
Policy Management		¥1,390,000	\$12,636	
Environment and Information Studies		¥1,390,000	\$12,636	
Nursing and Medical Care		¥1,650,000	\$15,000	
Pharmacy	Pharmacy	¥2,250,000	\$20,455	
	Pharmaceutical Sciences	¥1,980,000	\$18,000	

Graduate						(\$1=¥110)*	
Graduate School		Master's	JP Yen	US\$	Doctoral	JP Yen	US\$
Letters			¥1,010,000	\$9,182		¥720,000	\$6,545
Economics			¥1,010,000	\$9,182		¥720,000	\$6,545
Law			¥1,060,000	\$9,636		¥770,000	\$7,000
Human Relations			¥1,010,000	\$9,182		¥720,000	\$6,545
Business and Commerce			¥1,020,000	\$9,273		¥730,000	\$6,636
Medicine			¥1,410,000	\$12,818		¥1,170,000	\$10,636
Science and Technology			¥1,100,000	\$10,000		¥720,000	\$6,545
Media and Governance			¥1,470,000	\$13,364		¥730,000	\$6,636
Health Management			¥1,700,000	\$15,455		¥730,000	\$6,636
Business Administration			¥2,210,000	\$20,091		¥880,000	\$8,000
System Design and Management			¥1,980,000	\$18,000		¥1,200,000	\$10,909
Media Design			¥1,980,000	\$18,000		¥1,200,000	\$10,909
Pharmaceutical Sciences			¥1,050,000	\$9,545		¥720,000	\$6,545

1. Undergraduate: An enrollment fee (200,000 yen) is required for new students in their first year.
2. For graduate schools (master's or doctoral) no admission fee is required.
3. In addition to the above, miscellaneous costs will be levied. For more details, visit the website of the respective faculty/graduate school.

Graduate			(\$1=¥110)*	
Law School		JP Yen	US\$	
Juris Doctor		¥1,580,000	\$14,364	
LL.M.		¥1,670,000	\$15,182	

Japanese Language Program			(\$1=¥110)*	
School		JP Yen	US\$	
Japanese Language Program		¥585,000	\$5,318	

1. An enrollment fee (100,000 yen) is required for new students in their first year.
- Students enrolling in the LL.M. in Global Legal Practice program are not required to pay the enrollment fee.
2. In addition to the above, miscellaneous costs will be levied. For more details, visit the website of the Law School.
- \* Rate may vary

Scholarships

http://www.ic.keio.ac.jp/en/life/scholarship/

An overview of scholarships for international students

For undergraduate students

Name of Insitution	Name of Scholarship	Amount	Duration	Eligibile Applicants
Keio University	Keio University Scholarship	500,000 yen or 250,000 yen for one year (paid in lump sum)	1 year (Students may apply every year)	2nd year and higher
	Keio University Degree Completion Scholarship	Within the amount of tuition fees (average 300,000 yen)	1 year	All years
	Yamaoka Kenichi Memorial Scholarship for first year undergraduate students	700,000 yen for one year(Letters, Economics, Law, Business and Commerce) 900,000 yen for one year (Medicine, Science and Technology, Policy Management, Environment and Information Studies, Nursing and Medical Care, Pharmacy)	1 year	1st year
	Yamaoka Kenichi Memorial Scholarship for undergraduate and graduate students	500,000 yen for one year (paid in lump sum)	1 year	2nd year and higher
	Goldman Sachs Scholars Fund	500,000 yen for one year (paid in lump sum)	1 year	All years
Japanese Government (Monbukagakusho: MEXT)	The Japanese Government Scholarship under the Top Global University Project	Exemption from tuition fee 117,000 yen monthly	No more than 1 year	All years
Japan Student Services Organization (JASSO)	Monbukagakusho Honors Scholarship for Privately-Financed International Students (university recommendation) *Includes recipients for a six-month period	48,000 yen monthly	1 year (Students may apply every year)	All years
	Reservation Program for the Monbukagakusho Honors Scholarship for Privately-Financed International Students (university recommendation) *Includes recipients for a six-month period	48,000 yen monthly	1 year	1st year
Awarding Entities (Private Entities, etc.)	Various scholarships	10,000 yen - 180,000 yen monthly		All years
As of May 1, 2020				

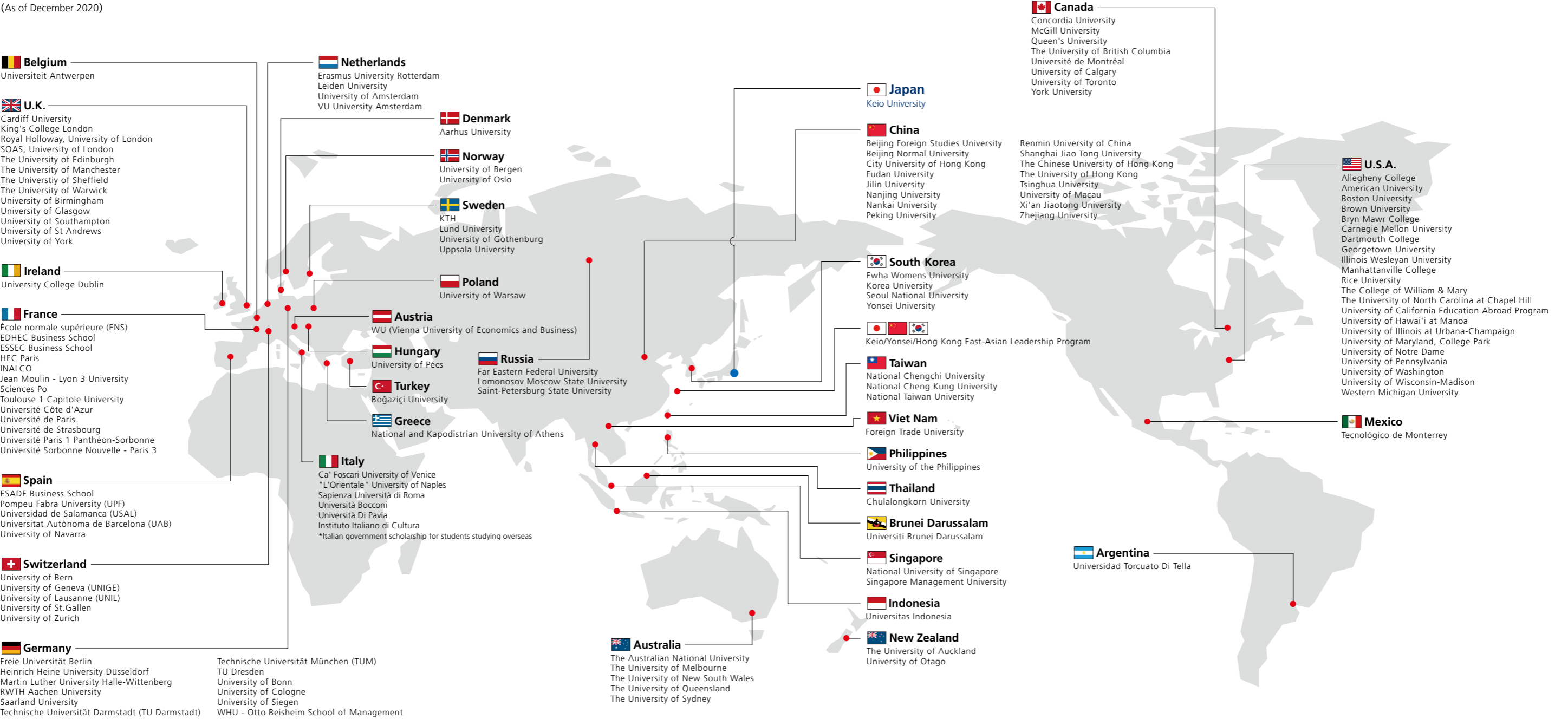
For graduate students

Name of Insitution	Name of Scholarship	Amount	Duration	Eligibile Applicants
Keio University	“Design the Future” Award for International Students	Exemption from tuition fee 200,000 yen monthly A one-time preparation grant of 150,000 yen including subsidy for the air fare	2 years (Master's) 3 years (PhD)	Master's/ PhD
	Keio Graduate School Scholarship	500,000 yen for one year (paid in lump sum)	1 year (Students may apply every year)	Master's/ PhD
	Keio University Degree Completion Scholarship	Within the amount of tuition fees (average 300,000 yen)	1 year	Master's/ PhD
	Yamaoka Kenichi Memorial Scholarship for third-year doctoral students	Dissertation guidance fee	1 year	PhD
	Yamaoka Kenichi Memorial Scholarship for undergraduate and graduate students	500,000 yen for one year (paid in lump sum)	1 year	Master's/ PhD
Japanese Government (Monbukagakusho: MEXT)	Goldman Sachs Scholars Fund	500,000 yen for one year (paid in lump sum)	1 year	Master's/ PhD
	The Japanese Government Scholarship under the Top Global University Project	Exemption from tuition fee 144,000 yen - 145,000 yen monthly	No more than 1 year	Master's/ PhD
Japan Student Services Organization (JASSO)	Monbukagakusho Honors Scholarship for Privately-Financed International Students (university recommendation) *Includes recipients for a six-month period	48,000 yen monthly	1 year (Students may apply every year)	Master's/ PhD
	Reservation Program for the Monbukagakusho Honors Scholarship for Privately-Financed International Students (university recommendation) *Includes recipients for a six-month period	48,000 yen monthly	1 year (Students may apply every year)	Master's/ PhD
Awarding Entities (Private Entities, etc.)	Various scholarships	10,000 yen - 180,000 yen monthly		Master's/ PhD
As of May 1, 2020				

# Keio welcomes international students from diverse backgrounds, expanding its world-wide network

## Partner institutions with which Keio has university-level student exchange agreements

(As of December 2020)



### Membership in Strategic Consortia

- APRU (Association of Pacific Rim Universities)
- CEMS (Community of European Management Schools and International Companies)
- GULF (Global University Leaders Forum at the World Economic Forum)
- PRRLA (Pacific Rim Research Libraries Alliance)
- T.I.M.E (Top Industrial Managers in Engineering)
- U7+ (Alliance of world universities)

### Number of International Students

#### Number of international students by type of program

Undergraduate (Full-time degree students)	781
Graduate (Full-time degree students)	748
Undergraduate (Non-degree students)	0
Graduate (Non-degree students)	23
JLP* students	180
Short-term international students	371

#### Number of International Students by Country/Region

China	946
South Korea	379
Taiwan	101
France	93
U.S.A.	74
Germany	54
Indonesia	46
Italy	43
Singapore	26
Thailand	26
68 other countries	315

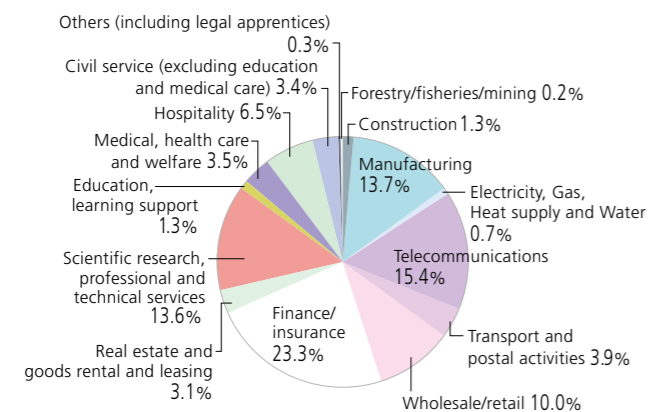
**Total** 2,103

As of May 1, 2019  
\*Japanese Language Program

# Status of Undergraduate Student Graduates

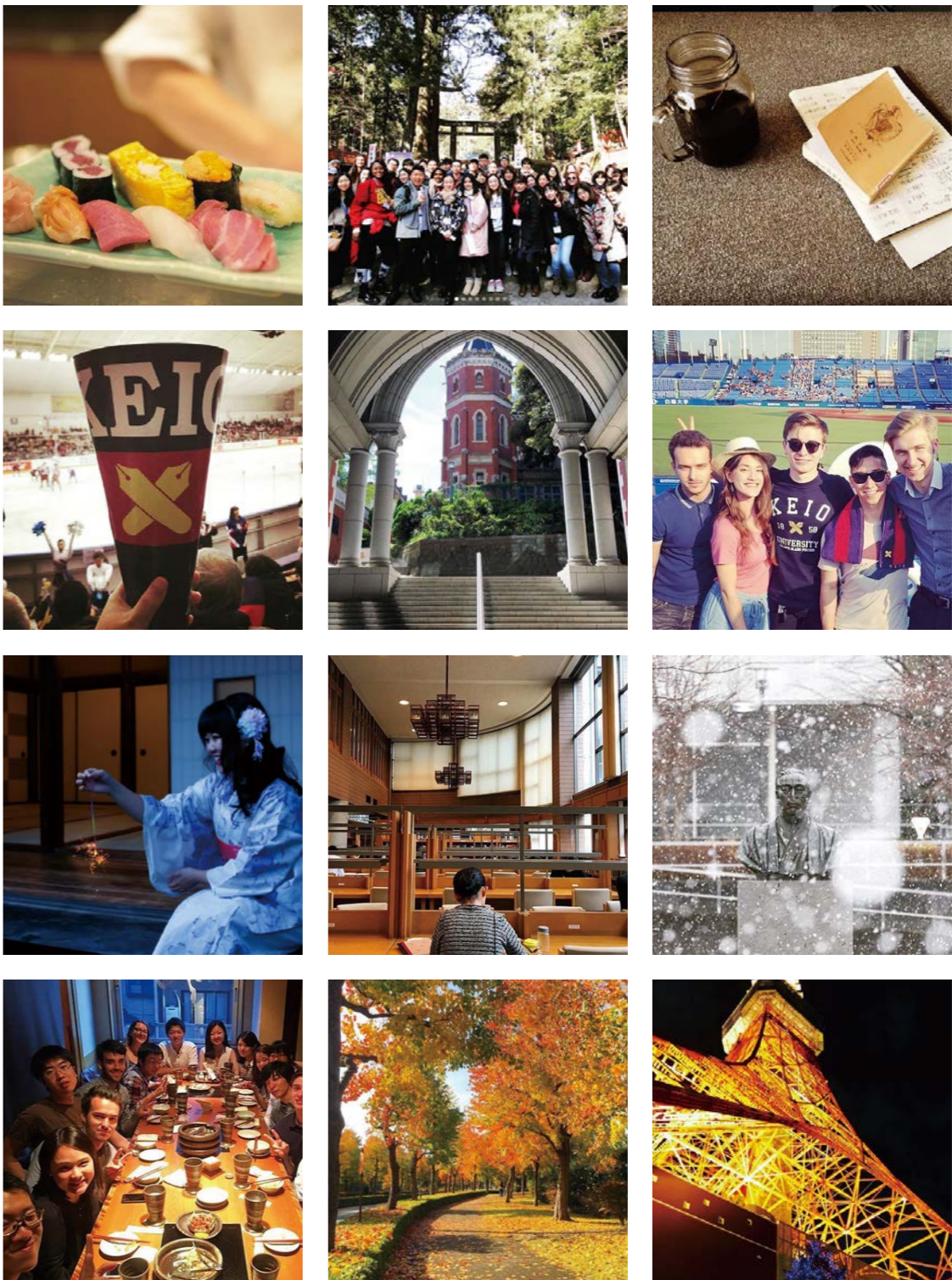
## Employment/Place of Employment (AY2017)

Total Number of employed graduates: 4,566 Number of students who advanced to a higher level degree: 1,083



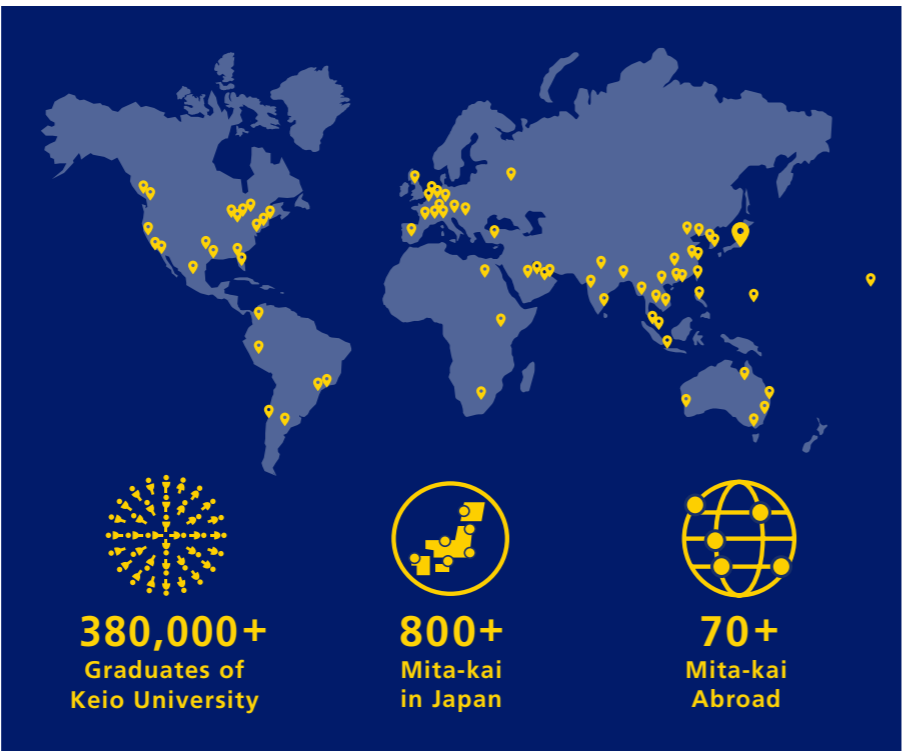
\*As of April 30, 2018 based on information given by graduates on the "Plans after Graduation" form  
\*Includes September 2017 undergraduate faculty and graduate school graduates.  
\*Employed includes those who will advance to a higher degree program in addition to securing employment.  
\*Refer below for the latest employment and advancement data  
<http://www.gakuji.keio.ac.jp/life/shinro/>  
\*The % figures in the graph do not necessarily add up to 100% as they are rounded off to one decimal place.

90	Mizuho Bank	28	Sumitomo Corporation
88	Keio University		Fujitsu
	Bank of Tokyo-Mitsubishi UFJ	27	Marubeni
76	Tokyo Marine & Nichido Fire Insurance		Nippon Life Insurance Company
62	Sumitomo Mitsui Banking Corporation	26	NHK (Japan Broadcasting Corporation)
53	Accenture	24	SMBC Nikko Securities
49	Nomura Securities	23	Ernst & Young ShinNihon LLC
45	Mitsui Sumitomo Insurance		Nomura Research Institute
	Mitsui & Co.	22	Mitsubishi Electric
44	Sumitomo Mitsui Trust Bank		Hitachi
38	Tokyo Metropolis		Hakuhodo
37	Mitsubishi Corporation		Deloitte Touche Tohmatsu LLC
35	KEYENCE CORPORATION	21	Resona Holdings
34	Deloitte Tohmatsu Consulting LLC		The Shoko Chukin Bank
33	ABeam Consulting		NTT East
32	All Nippon Airways		Bank of Japan
	Sompo Japan Nipponkoa Insurance		Japan Finance Corporation
	Dentsu	20	NTT DATA
31	Mitsubishi UFJ Trust and Banking		Mizuho Securities
30	ITOCHU		Recruit Career
	Meiji Yasuda Life Insurance		
29	Rakuten		
	Daiwa Securities		
	Japan Airlines		



## Mita-kai Alumni Network

Alumni of Keio university are called "Jukuin." Most of the 380,000 alumni of our university continue to hold dear the bonds they have formed at Keio. Mita-kai are independent, volunteer-run groups which bring together Keio alumni. Mita-kai take the form of clubs, societies, and seminars arranged around different themes, such as the yearly Mita-kai open to those graduating from Keio in a particular academic year, and the regional Mita-kai established in various regions in Japan and abroad. There are also Mita-kai by place or industry of employment for those in particular corporations or fields. There are around 800 Mita-kai in Japan and around 70 overseas. They are a platform for exchange and continued friendship among Keio alumni. Jukuin throughout the globe get together and engage in a variety of activities, including supporting the students currently charting their way in various fields.



[www.facebook.com/keioglobal](https://www.facebook.com/keioglobal)



[www.instagram.com/keio\\_university/](https://www.instagram.com/keio_university/)

keio university

[www.keio.ac.jp](http://www.keio.ac.jp)