



INTERNATIONAL UNIVERSITY OF HEALTH AND WELFARE

GUIDE BOOK 2019





Kuninori Takagi
M.D., Ph.D.
IUHW Chairman

Message from the Chairman

The International University of Health and Welfare (IUHW) was founded in 1995 as the first comprehensive university of health and welfare in Japan, with the objective of developing health and welfare specialists and raising their status. We foster professionals who are able to become leaders in their respective specialties, as well as adapt to the advancement and specialization of the medical, health care and welfare fields. We are now a university with around 8,300 students in 10 schools and 24 departments, as well as a graduate school, across 6 campuses, located in Ohtawara City in Tochigi Prefecture, Narita City in Chiba Prefecture, Minato City in Tokyo, Odawara City in Kanagawa Prefecture, and Fukuoka City and Okawa City in Fukuoka Prefecture.

"Building a society with mutual respect and support" is the founding principle of IUHW. We advocate three basic principles: "A university centered on humanity," "A university open to society," and "A university aiming for internationality," and give highly specialized human resources training so our students are equipped with outstanding humanity and are capable of contributing to "team care medicine." We offer a unique education from pioneers in their respective fields, replete with attached and affiliated medical facilities. Along with our five attached hospitals—IUHW Hospital and IUHW Shioya Hospital in Tochigi Prefecture, IUHW Ichikawa Hospital in Chiba Prefecture, IUHW Mita Hospital in Tokyo, and IUHW Atami Hospital in Shizuoka Prefecture—we have a number of affiliated health and welfare facilities that act as clinical research centers for medicine, and provide full cooperation with education, research, and personnel. We offer an excellent environment for practical education. Ohtawara Campus in Tochigi Prefecture has six health and welfare facilities, including support facilities for disabled persons, rehabilitation facilities, a special nursing care home, the only treatment facility for children with emotional disorders in Tochigi Prefecture, a certified kodomoen, and a university clinic with a Speech and Hearing Center at the forefront of Asia. This environment, where our students have direct contact daily with the elderly and people with disabilities, is one of the unique characteristics of our university. In terms of education, our students are taught by pioneers in their respective fields, including the deans of each school and heads of department, and their clinical training takes place in attached hospitals and affiliated medical facilities under the joint efforts of doctors and special staff highly respected in their fields.

The School of Medicine opened on Narita Campus last year, and is making steady progress in realizing an unprecedented, innovative medical education. Each year we accept 20 excellent international students, mainly from Asia. The majority of classes are conducted in English at the school, where clinical training overseas at foreign universities or medical institutions is compulsory. This spring the world's largest simulation center, measuring 5,300 m², was completed.

In April 2018, the university's sixth campus, Tokyo Akasaka Campus, was opened. In addition to the newly established School of Psychology and Healthcare Management at Akasaka, the expanded IUHW Graduate School is moving from Aoyama. The Akasaka Campus combines undergraduate schools and graduate school and offers education focusing on clinical medicine. We have also established a hall large enough to hold 1,000 people that can be used for academic conferences and training on campus. The IUHW Graduate School of Medicine has been newly formed, establishing programs in medicine and public health, with the aim of providing professional training that can respond to research of infectious diseases and remote image diagnosis in collaboration with the School of Medicine.

Further, the IUHW Narita Hospital, with 642 beds, is scheduled to open in 2020 in Hatakeda in Narita City. Our goal is to make this hospital an unprecedented world-class hospital hub equipped with the International Remote Image Diagnosis Center where pathological diagnosis and diagnostic radiology are carried out by connecting to overseas medical institutions, and the International Research Center of Infectious Diseases engaged in preventing infections from overseas. We will also allocate multilingual staff, meal services, and religious spaces.

IUHW has achieved a 100% employment rate each year. This is thanks to the many job offers we receive, due to the achievements of our graduates, as well as the pass rate in national examinations and the positive assessment given to the high quality of our education. There are already around 23,000 of our graduates active in health and welfare across the country. We always expect IUHW will continue to produce large numbers of excellent talent who will open up the field of health and welfare in Japan and overseas.

Contents

6 Campuses	2	Faculty, Departments.....	13-18
Messages.....	3	Japanese Language Program	19
Principles and History	4	International Students.....	20
Features of IUHW.....	5	Active International Exchange.....	21-23
Graduate School.....	6	Volunteer Activities	24
Universities and Affiliated Facilities	7	University Campuses and Access	25-26
Campuses	9-12		

6 Campuses



Ohtawara Campus



Fukuoka Campus



Tokyo Akasaka Campus



Okawa Campus



Odawara Campus



Narita Campus

About International University of Health and Welfare (IUHW)

IUHW was founded in 1995 as the first comprehensive university of health and welfare in Japan to advance the social status of specialists in the field of health and welfare. Our goal is to train and educate future leaders in their respective fields, capable of responding to the advancement and specialization of health and welfare field with good judgment and intelligence. At the same time, we have been strengthening international relations and cooperation activities across the globe, especially with developing countries in Southeast Asia. Approximately 8,300 students currently study at 10 schools and 24 faculty and departments in 6 campuses located in Ohtawara City (Tochigi Prefecture), Narita City (Chiba Prefecture), Akasaka (Tokyo), Odawara City (Kanagawa Prefecture), and Fukuoka and Okawa Cities (Fukuoka Prefecture).

Message from the President

Founded in 1995 in Ohtawara City in Tochigi Prefecture, IUHW is the first comprehensive university of health and welfare in Japan. In 2017, after more than ten years of planning we opened our School of Medicine, which marked the start of a second era for IUHW. Furthermore, in 2018 we will mark the opening of the Tokyo Akasaka Campus in Minato City in Tokyo, which we hope will become a hub for lifelong education and community exchanges, serving as the home to the School of Psychology and Healthcare Management at Akasaka and also the expanded IUHW Graduate School, which will move from its former location on the Tokyo Aoyama Campus. At the time of its establishment IUHW had one school and five departments, and since then we have expanded to ten schools and 24 departments, in addition to a graduate school, spread over six campuses.

The founding principle of IUHW that we have followed since our establishment is “building a society with mutual respect and support”, which was advocated by our first President, Fujio Ohtani, who strove to protect human rights throughout his life. In accordance with that principle we have developed the educational environment so that our campuses also include health and welfare facilities for the elderly and disabled, giving students the opportunity to have direct contact with people who have special needs and thus nurture loving-kindness in their everyday experiences naturally.

The education we provide is designed to nurture medical professionals with advanced knowledge and technical skills, coupled with a rich sense of humanity. Accordingly, our faculty consists of pioneers in their respective fields and our trailblazing curriculum utilizes advanced educational tools. Furthermore, we emphasize on-site experience in the early years, with clinical training being conducted from an early stage in the first year of study at the University Hospitals and many other affiliated medical facilities which act as clinical research centers for medicine. In 2020 the IUHW Narita Hospital is scheduled to open in Narita City, Chiba Prefecture, which will further enhance our practical learning environment.

“Team care medicine” is indispensable in the medical and welfare fields today, where professionals from various specialties work together to provide the best treatment and care for patients. Taking full advantage of our university’s comprehensive structure and multiple departments that foster specialists in various fields, we implement “Inter-Professional Education,” an initiative unique to IUHW, by which we form teams that comprise members from various departments so that students can experience “team care medicine” for themselves. The establishment of the School of Medicine in 2017 and the most recent addition of the School of Psychology and Healthcare Management at Akasaka will add further medical and psychology-based specialist perspectives to our team-based work, making our education even more appropriate for clinical training.

I hope that students who aim to study at IUHW will take advantage of our outstanding faculty and fulfilling educational environment, and engage not only in study, but also in sports and volunteer work, and in the process become well-rounded individuals who can take a leading role in a broad range of areas in health and welfare, both in Japan and around the world.



Kuni Ohtomo

M.D., Ph.D.
President

Profile

Graduated from the University of Tokyo, School of Medicine. After study overseas at Washington State University and the University of Pittsburgh in the United States, he was appointed Professor of Radiology, Medical Science Graduate Program, the University of Tokyo Graduate School. He specializes in radiodiagnosis and has contributed to developments in diagnostic imaging and interventional radiology using of CT and MRI, predominantly in the field of gastroenterology. He has served in various positions to date, including Chief Director of the Japan Radiological Society, President of the 70th and 74th Annual Meeting of the Japan Radiological Society, and Head of the Radiology & Biomedical Engineering Program at the University of Tokyo Graduate School of Medicine. He currently serves as President of the Japan Radiology Congress and is Honorary Professor at the University of Tokyo.

Message from the Dean, IUHW Graduate School

Japan is increasingly becoming a super-aging society, and the proportion of elderly in its population is estimated to reach 33.4% in 2035. For this reason, it is predicted that there will be a dramatic shortage of the necessary human resources in the fields of medical care, welfare, and nursing care in the future.

Responding to such social needs, IUHW, as a university for fostering a variety of professionals in medical, health care and welfare fields, provides education for students who work to realize their goal of becoming future medical staff in a blessed educational environment. This education is given at a number of clinical educational facilities, including five attached hospitals and by excellent academic staff who are active as leaders at the forefront of health care in Japan.

Currently, approximately 23,000 of our graduates are playing a leading role as society transitions to a new era nationwide and shouldering heavy social responsibilities, whilst responding to the advancement and specialization of the medical, health care and welfare fields, with a high level of skills and knowledge and rich educational ability. With the establishment of the IUHW School of Medicine last year, which provides innovative medical education based on new concepts, I believe that our university will continue to fulfill an ever-greater role in the future.



Soichiro Miura

M.D., Ph.D.
Dean, IUHW Graduate School

Profile

Graduate of Keio University, School of Medicine, Ph.D. in Medical Science / Former President, National Defense Medical College / Honorary Professor, National Defense Medical College / Visiting Professor, Keio University, School of Medicine / Dean, IUHW Graduate School (since June 2017)

The Principles and Educational Goals of International University of Health and Welfare (IUHW)

3

Fundamental Principles of IUHW

University focused on well-balanced individuals with a solid sense of humanity

University strongly connected to and fully open to the community

University directed towards the attainment of global standard

7

Educational Principles of IUHW

Personality Development

Expertise

Inter-profession

Information Science and Technology

Internationality

Freedom of Thought

Innovative University Management

History of IUHW

1995 APR	Establishment of International University of Health and Welfare Establishment of School of Health
1997 APR MAY	Establishment of School of Health and Welfare Opening of IUHW Clinic
1998 OCT	Establishment of International Research Institute of Health and Welfare
1999 APR	Establishment of Master's Program in Health Sciences
2001 APR	Establishment of Doctoral Program in Health Sciences, and Master's Program in Health and Welfare, and in Health Service Management Establishment of Satellite Campuses for Graduate School
2002 JUL	Opening of IUHW Atami Hospital
2005 MAR APR	Opening of IUHW Mita Hospital Establishment of School of Pharmacy at Ohtawara Campus and School of Rehabilitation Sciences at Okawa Campus in Fukuoka Prefecture
2006 APR	Establishment of School of Health Sciences at Odawara Campus in Kanagawa Prefecture
2007 FEB APR	International Health and Welfare Hospital renamed to IUHW Hospital School of Health renamed to School of Health Sciences School of Rehabilitation Sciences renamed to School of Rehabilitation Sciences at Fukuoka Establishment of the Master's Program in Clinical Psychology

2009 APR	Establishment of School of Nursing at Fukuoka (Fukuoka City in Fukuoka Prefecture) Unification of two departments in School of Health and Welfare into new Department of Social Services and Healthcare Management Establishment of Master's Program in Pharmaceutical Sciences and in Biosis-pharmacy * Presently renamed to Biopharmaceutical Science Opening of IUHW Shioya Hospital Opening of IUHW Shioya Nursing College
2011 JAN	Opening of IUHW Nasu Seminar House
2012 FEB APR AUG	Opening of IUHW Radiation Disaster Control Research Center Establishment of Doctoral Program in Medical and Biopharmaceutical Science in Graduate School of Pharmacy Opening of Yufuin Seminar House and Amity Yufu-kogen (Yufu City, Oita Prefecture)
2013 APR	School of Rehabilitation Sciences at Fukuoka renamed to School of Health Sciences at Fukuoka Establishment of Department of Medical Technology and Sciences in School of Health Sciences at Fukuoka Relocation of School of Nursing at Fukuoka to Seaside Momochi area in Sawara-ku, Fukuoka City
2015 JUN	Opening of Japanese Language Program
2016 APR	Establishment of School of Nursing/Health Sciences at Narita (Narita City, Chiba Prefecture)
2017 APR	Establishment of IUHW School of Medicine at Narita
2017 SEP	Kaken Hospital renamed to IUHW Ichikawa Hospital
2018 APR	Establishment of School of Psychology and Healthcare Management at Akasaka (Tokyo Akasaka Campus) Establishment of Graduate School of Medicine (Doctoral Program) and Graduate School of Public Health (Master's Program)

Features of IUHW

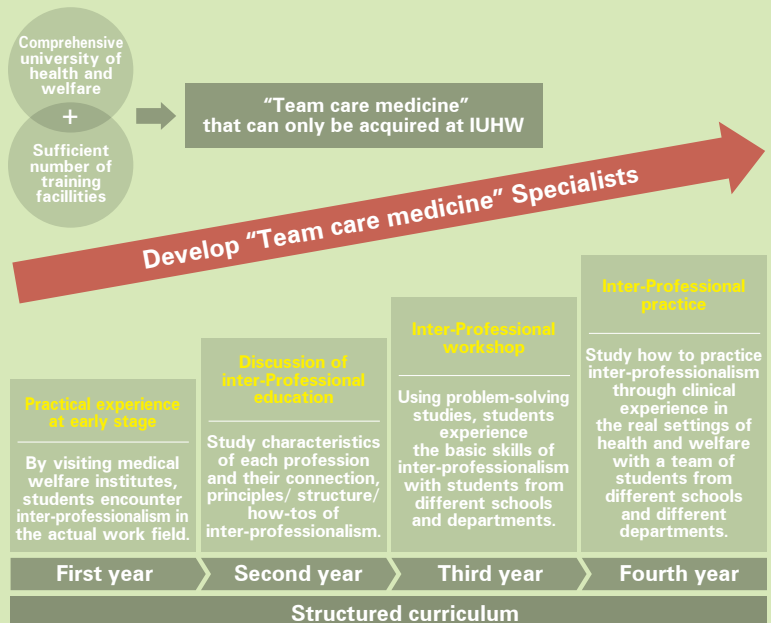


Inter-Professional Education (IPE)

We offer "Team care medicine", where different health and welfare specialists provide medical treatment and care to each patient.

With various types of health and welfare institutions, IUHW provides Inter-Professional Education (IPE) where students learn "Team care medicine", indispensable in the field of health and welfare over the coming years.

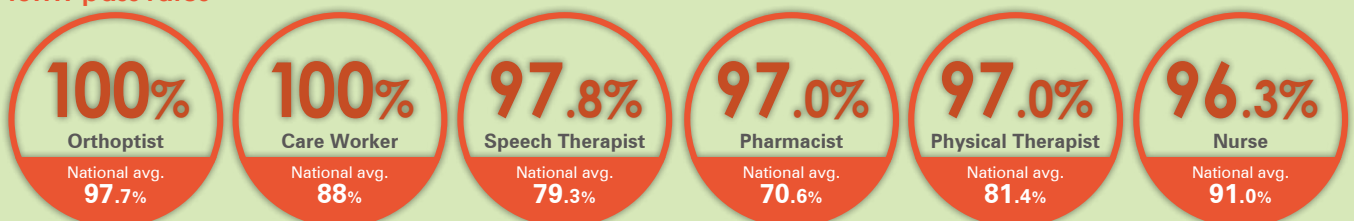
The IPE consists of 4 steps. Practical training in the fourth year will be conducted at IUHW group affiliated institutions including 12 medical facilities and 18 welfare institutions such as university hospitals. IUHW, as a comprehensive university, accepts students who aspire to become various types of medical specialists. It offers a unique curriculum where students can acquire "Team care medicine" through experience at the undergraduate level.



National Examination Pass Rates

The pass rate of national license examinations of IUHW students continues to show excellent levels over the past many years. Among 12 different license tests in the academic year 2017, IUHW has recorded outstanding pass rates and results in the following professions: Orthoptist, Care Worker, Speech Therapist, Pharmacist, Physical Therapist, and Nurse.

IUHW pass rates



Employment

A wide range of job options will be available to students upon graduation, varying from hospitals, health and welfare institutes, medicine related companies, research institutes, etc. We assist students seeking employment opportunities by providing support, such as comprehensive guidance for job search at career support seminars and well-organized employment search engine systems. In academic year 2016, for 1,316 students seeking jobs, there were 101,444 job opportunities offered to our 4 campuses. Approximately 77 job opportunities were offered to a student and the rate of employment reaches almost 100% every year.



Various Scholarship Programs

Students will be chosen among Special Scholarship Exam and General Exam (primary) applicants with top scores. Tuition may even be cheaper than public universities. Up to 50 % of the students receive scholarships, including university's original scholarship programs as well as other financial support for students striving to work as health and welfare professionals in the future.



Graduate School International University of Health and Welfare

**“For researchers to explore the future of health,
medical and welfare fields”**

The Graduate School at International University of Health and Welfare offers programs for scholars for further mastery as researchers and expert medical partners. The programs are set up and scheduled so that students can learn while working full-time or even after a long interval.

History

The Graduate School of IUHW aims to foster health and welfare researchers, educators and experts to meet the needs of the 21st century. It opens its doors to those who want to research and investigate further while still working full-time.

1999	Establishment of MS Program in Health Sciences
2001	Establishment of PhD Program in Health Sciences and MA Program in Health and Welfare, and Health Service Management
2004 MAR	First year to grant doctoral degrees—the completion of the entire educational program at IUHW
APR	Establishment of Department of Clinical Testing Laboratory Research (In 2008 the title of the same specialty changed to Research and Development of New Medicinal Treatment*.)
2005	Establishment of Departments of Assistive Cytogenic Reproduction* and Health and Welfare Journalism*
2006	Establishment of Departments of Midwifery and Orthoptics
2007	Establishment of MS Program in Clinical Psychology
2008	Establishment of Department courses in Radiological Technologist for Cancer Treatment, Certified Pharmacist for Cancer Medicinal Treatment, and Technical Cancer Registry (Supported by the Ministry of Education and Science “Training Scheme for Cancer Treatment Professionals”)
2009	Establishment of Department of Pharmaceutical Sciences and MS program for Bioscience-pharmacy Establishment of the PhD Program in Pharmaceutical Sciences Establishment of Department of Nurse Practitioner
2010	Establishment of MA Program of Business Administration in Healthcare (h-MBA) Establishment of Department of Health Information Management and Analysis
2011	Establishment of PhD Program in Journalism in Healthcare Establishment of PhD Program in Medical Psychology Establishment of Department of Assistive Technology Science
2015	Establishment of Departments of Education and Management in Health and Welfare
2016	Establishment of Departments of Medical Laboratory Science
2017	Establishment of Departments of Medical Interpreter and International Medical Management
2018	Establishment of PhD Program in Medicine Establishment of MPH Program in Public Health

*Entirely new Department in Japan

Campuses and Curricula for scholars to learn and research while working

More and more health and welfare specialists want to study at graduate school to gain advanced knowledge and skills while working. As the number is increasing year by year, our graduate school has set up 7 campuses in Ohtawara, Narita, Akasaka in Tokyo, Odawara, Atami, Fukuoka, and Okawa. Most classes are scheduled in the evenings and on Saturdays. In addition, our MS program for Clinical Psychology has been accredited by the Japan Association of Clinical Psychologists.

Distance Learning

A tele-communication system has been installed on the 7 campuses through which classes and seminars are conducted, inviting lively discussion between teachers and students. This distance learning system can offer classes simultaneously to every campus.

Departments

[Master's Program]

Health Sciences

Nursing
Training System for Nurses Pertaining to Specified Acts
Midwifery
Physical Therapy
Occupational Therapy
Speech and Hearing Sciences
Orthoptics and Visual Sciences
Assistive Technology Science
Rehabilitation
Radiological Science
Clinical Science in Embryology
Education and Management in Health and Welfare
Medical Laboratory Science

Master's Program in Health and Welfare, and Health Service Management

Health Service Management
Health Information Analyst
International Cooperation in Health and Welfare
Development of Care and Network
Health and Social Service
Journalism on Health and Welfare Issues
Medical Interpreter and International Medical Management

Clinical Psychology in Health and Welfare

Graduate School of Pharmaceutical Sciences

Graduate School of Public Health

[Doctoral Program]

Health Sciences

Nursing
Midwifery
Physical Therapy
Occupational Therapy
Speech and Hearing Sciences
Orthoptics and Visual Sciences
Assistive Technology Science
Rehabilitation
Radiological Science
Clinical Science in Embryology

Medical Laboratory Science

Health Service Management
Health Information Management and Analysis
International Cooperation in Health and Welfare
Development of Care and Network
Health and Social Service
Journalism on Health and Welfare Issues

Clinical Psychology in Health and Welfare

Graduate School of Pharmacy

Graduate School of Medicine

University Hospitals & Affiliated Facilities

IUHW group has many medical and welfare facilities including 5 university hospitals and Sanno Hospital in Tokyo. Those provide valuable opportunities for clinical training for students to develop their expertise.

Students will experience “Team care medicine” in clinical practice and study advanced skills with state-of-the-art medical devices. This is one of the most unique features of IUHW as a university with various facilities for clinical training. In addition, as many graduates work at IUHW university hospitals and affiliated facilities, students can enjoy OJT from their seniors in a caring atmosphere.

* IUHW Narita Hospital will be opened in April 2020

IUHW Hospital Main Hospital

353 beds (Tochigi)



IUHW Shioya Hospital

240 beds (Tochigi)



IUHW Mita Hospital

291 beds (Tokyo)



JCI-Accredited
Organization



IUHW Atami Hospital

269 beds (Shizuoka)



IUHW Ichikawa Hospital

260 beds
(Chiba)



IUHW Narita Hospital

IUHW Narita Hospital, a new hospital with international features, is scheduled to open in 2020.

Planned location: Hatakedo, Narita City, Chiba

No. of beds: 642 No. of departments: 39 (planned)

Site area: Approx. 159,605.65 m² Total floor area: Approx. 94,814.52 m²

Features:

1. With state-of-the-art medical equipment, dedicated staff and ample amenities, the hospital aims to be a global standard hub hospital that provides cutting-edge medical care not only to Japanese patients, but also to patients from overseas.
2. The International Remote Diagnosis Center and the International Research Center on Infectious Diseases will act as bases for collaboration with overseas universities and medical institutions, in addition to which the hospital will feature a radiology department with the very-latest medical devices and 20 operating theaters.
3. Internationally-oriented staff capable of responding to the needs of various nationalities and cultures, in addition to the provision of meals responding to special dietary or religious requirements, and spaces allocated for religious purposes.
4. Planned provision of a Health Promotion Center, including a swimming pool and fitness studio.
5. The hospital aims to provide high quality medical care and services, working in collaboration with university hospitals and Sanno Hospital (Minato-ku, Tokyo), which is the university's clinical research center for medicine.



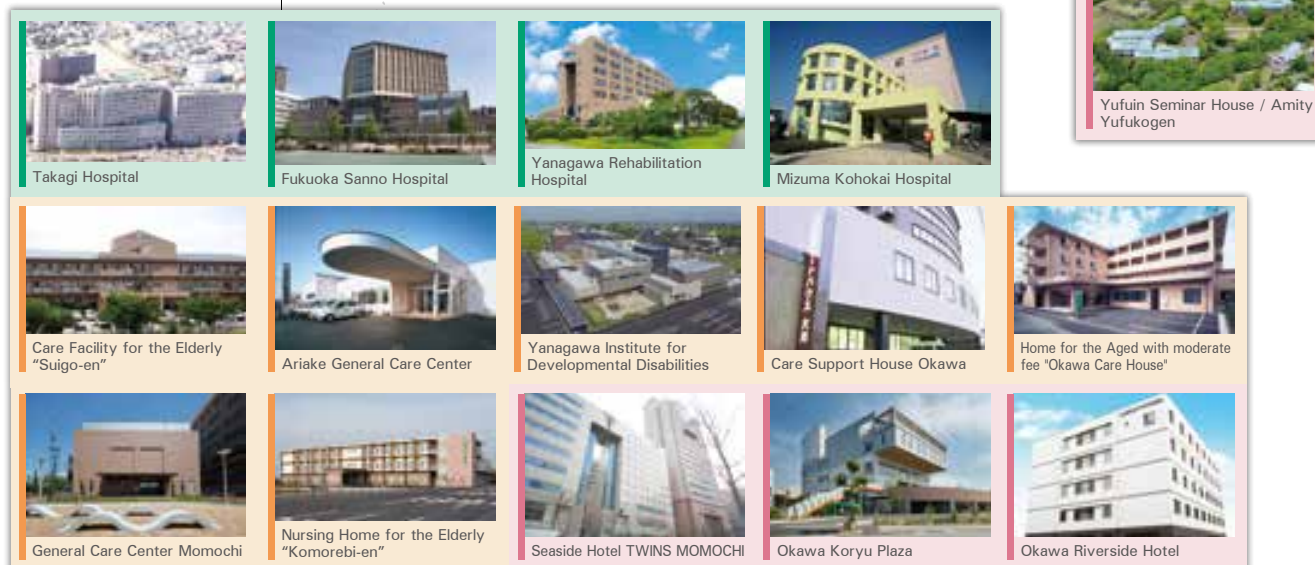
Tochigi Area



Tokyo Area



Fukuoka Area



Oita Area

Nasu Seminar House (Nasushiobara, Tochigi)

Facility for practical and exercise training, research activities and club activities for students and faculty members
Rooms for 138 guests. Conference rooms, Meeting rooms, Gymnasium, Play ground, Dining room, Bathroom

Yufuin Seminar House (Yufuin, Oita)

Facility for practical and exercise training, research activities for students and faculty members. Rooms for 63 guests (all private rooms), Conference rooms, Meeting rooms, Lounge, Dining room, Bathroom

Seaside Hotel TWINS MOMOCHI (Fukuoka)

198 guest rooms

Okawa Riverside Hotel

62 guest rooms

Okawa Community Plaza

Composite for culture and medical welfare
Bookstore, Certified Center for Early Childhood Education and Care, Home care support clinic, Ambulatory Rehabilitation, Theater

Ohtawara Campus Dormitory "Wakakusa"

26 all private rooms

Narita Campus Dormitory "Narita International House"

216 all private rooms

Campuses

Ohtawara Campus (Ohtawara City, Tochigi)

School of Health Sciences

Department of Nursing (115)
Department of Physical Therapy (100)
Department of Occupational Therapy (80)
Department of Speech and Hearing Sciences (80)
Department of Orthoptics and Visual Sciences (50)
Department of Radiological Sciences (120)

School of Health and Welfare

Department of Social Services and Healthcare Management (140)

School of Pharmacy

Department of Pharmaceutical Sciences (180)
[6-year curriculum]

Narita Campus (Narita City, Chiba)

School of Medicine

Faculty of Medicine (140)

School of Nursing at Narita

Department of Nursing (100)

School of Health Sciences at Narita

Department of Physical Therapy (80)
Department of Occupational Therapy (40)
Department of Speech and Hearing Sciences (40)
Department of Medical Technology and Sciences (80)

Tokyo Akasaka Campus (Minato City, Tokyo)

School of Psychology and Healthcare Management at Akasaka

Department of Psychology (60)
Department of Healthcare Management (60)

Odawara Campus (Odawara City, Kanagawa)

School of Health Sciences at Odawara

Department of Nursing (80)
Department of Physical Therapy (80)
Department of Occupational Therapy (40)

Fukuoka Campus (Fukuoka City, Fukuoka)

School of Nursing at Fukuoka

Department of Nursing (100)

Okawa Campus (Okawa City, Fukuoka)

School of Health Sciences at Fukuoka

Department of Physical Therapy (80)
Department of Occupational Therapy (40)
Department of Speech and Hearing Sciences (40)
Department of Medical Technology and Sciences (80)

Graduate School

Health and Welfare Sciences [Master's Program]
[Doctoral Program]

Pharmacy [Doctoral Program – 4 years]

Pharmaceutical Sciences [Master's Program]

Medicine [Doctoral Program – 4 years]

Public Health [Master's Program]

Japanese Language Program (JLP)

* (): Number of grade capacity

Ohtawara Campus

2600-1 Kitakanemaru, Ohtawara City, Tochigi 324-8501
Tel.+81-287-24-3200
E-mail nyushi@iuhw.ac.jp



Just 70 minutes from Tokyo on Tohoku Shinkansen, the closest train station to the campus is Nasushiobara. The vast campus of over 260,000m² has an on-site healthcare clinic and other medical facilities.

Education, medical care and welfare are all provided on campus. This unique setting gives students frequent opportunities to care for the elderly and people with disabilities nurturing a compassionate approach toward others which is essential for medical professionals.



▲Hunter Mountain Shiobara
Ski Resort



▲Kurobane Hot Spring

Narita Campus

4-3 Kozunomori, Narita City, Chiba 286-8686
Tel. +81-476-20-7705
E-mail narita-nyushi@iuhw.ac.jp



School of Nursing and School of Health Sciences were established in April 2016, and School of Medicine was established in April 2017. First building for School of Medicine was completed in February 2017, and the 2nd building was completed in December 2017. Conveniently located right in front of Kozunomori Station on Keisei Honsen line, students are able to commute from Tokyo and neighboring cities. The campus is set in a quiet, and natural environment with easy access to commercial facilities, such as shopping malls, restaurants and convenience stores.



▲Narita New Tokyo
International Airport
©NARITA INTERNATIONAL
AIRPORT CORPORATION



▲Naritasan Shinshoji Temple
©Naritasan Shinshoji Temple

Tokyo Akasaka Campus

4-1-26 Akasaka, Minato-ku, Tokyo 107-8402
Tel. +81-3-5574-3903
E-mail akasaka-nyushi@iuhw.ac.jp



Tokyo Akasaka Campus opened in April 2018 on the site of the former Akasaka Elementary School in Minato-ku, Tokyo. Conveniently located a three-minute walk from Tokyo Metro Akasaka-mitsuke Station, the area is home to various facilities that epitomize central Tokyo, including the National Diet Building, television stations and large-scale commercial complexes. The campus has facilities such as Akasaka Hall, Lifelong Learning Center and International Exchange Center, which can also be used by the local community. IUHW aims to become a hub for the community and for the international exchange and interaction.



▲Tokyo tower



▲Hikawa Festival

©Akasaka Hikawa Parade Float Preservation Society

Odawara Campus

1-2-25 Shiroyama, Odawara City, Kanagawa 250-8588
Tel. +81-465-21-0361
E-mail od-nyushi@iuhw.ac.jp



New Jonai school building opened in March 2017. Odawara Campus is right beside Odawara Station, where several different railway lines are running in. With easy access from neighboring cities, the campus is only 35 minutes away from Tokyo Station by Shinkansen, making it convenient for students to commute from out of town. Odawara Campus is an ideal environment to study.



▲Odawara Castle



▲Lake Ashinoko

Fukuoka Campus

1-7-4 Momochihama, Sawara, Fukuoka City, Fukuoka 814-0001
Tel. +81-92-407-0805
E-mail fkango-nyushi@iuhw.ac.jp



Fukuoka Campus is located at Seaside Momochi in central Fukuoka City, gateway to Asia. Close to Fukuoka Sanno Hospital, an IUHW-affiliated facility, hands-on medical training is provided directly from leading experts in their respective fields using state-of-the-art equipment. The campus provides an ideal environment for learning, with educational and cultural facilities nearby such as a library, museum, educational institutes, and TV station.



▲Fukuoka Tower



▲Dontaku Festival
©Fukuoka City

Okawa Campus

137-1 Enokizu, Okawa City, Fukuoka 831-8501
Tel. +81-944-89-2000
E-mail okawa-nyushi@iuhw.ac.jp



In the southern area of Fukuoka Prefecture, Okawa Campus in Okawa city flourishes with the gifts of nature from Ariake Sea and Chikugo River. The rich natural surrounding provides students an ideal environment to study. The campus is attached to Takagi Hospital, an IUHW-affiliated facility, students to learn from health and welfare experts with advanced knowledge and skills.



▲Chikugo River Vertical-Lift Bridge



▲Furogu Shrine

Department of Psychology

Tokyo Akasaka Campus

Fostering specialists in mental health care which is important in a stressful society by education that emphasizes in “team-based clinical” approach

Mental health care is becoming increasingly important in the workplace, at schools, in the home and in medical institutions. Leveraging our special characteristics as a comprehensive health and welfare university, the Department of Psychology trains psychologists with strong clinical skills, who are capable of playing a central role in the mental health care through the education that focuses on a team-based clinical approach to counseling in cooperation with other specialist fields.

National License

- Licensed Psychologist, (Certified Psychologist)

Work Settings

- In the health and welfare field
- School Counselor
- Family Court Probation Officer
- Financial institution
- Manufacturer
- Media
- Service industry, etc.



Department of Healthcare Management

Tokyo Akasaka Campus

Fostering specialists who can enhance the “quality of medicine” by utilizing IT data in the medical management of new era

Medicine has entered a new era with the evolving artificial intelligence (AI) and utilization of big data. The Department of Healthcare Management trains specialists in health and welfare management who can support the high-quality, safe medicine and the stable management of hospitals by accurately analyzing and utilizing IT information and data, through the education that focuses on practical affairs, building on the track record of the Department of Social Services and Healthcare Management at Ohtawara Campus which has produced many health information managers.

License

- Health Information Manager

Work Settings

- Administrative professionals in a medical institution
- Healthcare industry
- Financial institution
- Consulting firm
- Construction company, etc.



Faculty of Medicine

Narita Campus

Fostering international medical professionals with an enrolment capacity of 140 students

First medical school in Japan to have a high ratio of foreign students (20 out of 140) in one grade. Of the 6 years of study, the first 2 will be taught mainly in English. From the 3rd year to graduation, classes will be focused on fostering clinical abilities. 90 weeks of clinical participation training will take place from the 4th grade at institutions, not only IUHW university hospitals, but other group institutions. All students will undergo over 4 weeks of clinical practice overseas in the final year of their study. To bring distinction as a comprehensive university of health and welfare, our curricula feature "Inter-professional education", practice students from different schools gather to experience and actually get acquainted with "Team care medicine".



Department of Nursing

Ohtawara Campus

Narita Campus

Odawara Campus

Fukuoka Campus

We prepare nursing professionals with profound knowledge, skills and compassion

Nurses play diverse roles in the constantly changing scenes of advanced medical care. As members of Team care medicine, we train nurses/public health nurses with solid knowledge and skills, equip them with the ability to make accurate judgements, and nurture a profound caring heart.

National Licenses

- Nursing License
- Public Health Nurse

Work Settings

- Hospitals / Clinics
- Visiting nurse stations
- Nursing homes / Elderly care facilities
- Public offices such as health centers
- Educational / Research institutions
- Airport (quarantine)
- Private companies



Department of Physical Therapy

Ohtawara Campus

Narita Campus

Odawara Campus

Okawa Campus

We prepare rehabilitation professionals of the next generation with highest standard medical knowledge and skills

The job of physical therapists is to offer knowledge and skills in improving the QOL (quality of life) of patients with disabilities. The career path of physical therapists have expanded from health and welfare, emergency medicine, sports and various other fields. Our program enhances knowledge, skills and communication abilities, and train physical therapists with a caring heart.

National License

- Physical Therapist

Work Settings

- Hospitals / Clinics
- Public offices such as health centers
- Rehabilitation centers
- Nursing homes / Elderly welfare facilities
- Medical equipment industry
- Health promoting centers
- Educational / Research institutions



Department of Occupational Therapy

Ohtawara Campus

Narita Campus

Odawara Campus

Okawa Campus

We train experts who assist people with disabilities to participate in everyday life activities

Occupational therapists aim to assist people to enhance their ability and engage in a self-reliant social life. Effort is put into performing daily life activities the client needs or hopes for. Our program provides students with the expertise in becoming specialists in the body and soul through clinical training.

National License

- Occupational Therapist

Work Settings

- Hospitals / Clinics
- Public offices such as health centers
- Rehabilitation centers
- Nursing homes / Elderly welfare facilities
- Nurseries / Children's facilities
- Special schools for children with disabilities



Department of Speech and Hearing Sciences

Ohtawara Campus

Narita Campus

Okawa Campus

We prepare students of the next generation to diagnose and treat biological and environmental speech/hearing-related problems and swallowing disorders

Speech-Hearing therapists provide professional assistance using their specialized knowledge and skills to clients with disabilities in daily activities such as communication and eating. Our program offers top-quality rehabilitation skills and we aim to educate specialists with high professionalism and a service-oriented approach.

National License

- Speech Therapist

Work Settings

- Hospitals / Clinics
- Public offices such as welfare centers and rehabilitation centers
- Nursing homes / Elderly welfare facilities
- Special support education schools / facilities for the disabled
- Research scientists in the field of speech and language science / communication disorders



Department of Medical Technology and Sciences

Narita Campus

Okawa Campus

We educate medical technologists of the next generation

Medical technologists play major roles in the decision-making of the treatment method for patients, conducting various examinations such as electrocardiograms, brain waves, blood tests and others. Our program focuses on training experts capable of adapting to the diversification of medical services and advancement of examination methods, equipping them with both basic information and up-to-date technology essential in the present medical scene.

National License

- Medical Technologist

Work Settings

- Hospitals / Clinics
- Public offices such as health centers
- Private inspection institutes
- Pharmaceutical companies
- Medical equipment manufactures / related companies
- Scientific investigation section of police
- Civil service (specializing in sanitation)



Department of Orthoptics and Visual Sciences

Ohtawara Campus

We provide latest ophthalmic medical treatment using professional knowledge and skills

As ophthalmic medicine becomes highly advanced, training experts in this field also becomes crucial. Our program focuses on clinical training which not only refines individual skills but enriches professionalism through collaborative work in "Team care medicine". Students should aim to become comprehensive healthcare professionals, expert orthoptists who can convey the joy of "seeing."

National License

- Orthoptist

Work Settings

- Hospitals / Clinics
- Rehabilitation centers
- Ophthalmological clinics
- Health administration facilities
- Medical industry and medical equipment manufacturers
- Educational / Research institutions



Department of Radiological Sciences

Ohtawara Campus

We train our radiological technologists systematically from basic to highly advanced technology which enables them to fully promote advanced medicine

The department uses educational devices such as medical image diagnosis apparatus, radiation therapy equipment and various other equipment which are essential in the clinical scene. Our program offers clinical training at the 5 IUHW university hospitals and 40 facilities, differentiating our university from other schools.

National Licenses

- Radiological Technologist
- Radiation Protection Supervisor

Work Settings

- Hospitals / Clinics
- Health screening centers
- Medical administration facilities
- Medical industry and medical equipment manufacturers
- Educational / Research institutions



Department of Social Services and Healthcare Management

Ohtawara Campus

We train professionals able to comprehensively support health and welfare

Japan has one of the longest life expectancies in the world. In order to assist people in living quality life, experts with knowledge both on health and welfare are in high demand. Additionally, to play central roles in practical health and welfare, management skills are also essential. Although there are many colleges and vocational schools focusing on social welfare and medical office work skills, our program trains professionals with knowledge in three different but related fields: medicine, welfare and management.

National Licenses

- Certified Care Worker
- Certified Social Worker
- Psychiatric Social Worker

Work Settings

- Social welfare institutions/administration/service agencies
- Home care service facilities
- Consulting work in welfare institutions for the elderly, the handicapped, and children
- Welfare organizations
- Consulting work in social rehabilitation facilities
- Consulting work in companies, schools, and judiciary agencies



Department of Pharmaceutical Sciences

Ohtawara Campus

We educate top-class medical professionals devoted to "Team care medicine"

Our program offers training not only at on-campus facilities, but also at IUHW hospitals and affiliated hospitals which provides students with great practical experience from clinical training in Year 5. These trainings prepare students with the flexibility to demonstrate their abilities in "Team care medicine" and enable them to become top-class pharmacists.

National License

- Pharmacist

Work Settings

- Hospitals / Clinics
- Pharmacies
- Research and development section in pharmaceutical companies
- Administrative agency
- Educational / Research institutions



Japanese Language Program (JLP)

JLP is designed for people whose native language is not Japanese to help them acquire Japanese language proficiency, and deepen their understanding of the situation, culture, and other aspects of Japan. Experienced, dedicated staff in charge of international students are available to assist them with all of their academic and personal needs, including living arrangements in Japan, JLP studies, and advancement to universities and other schools. JLP students have access to the same facilities as IUHW students. Furthermore, our program allows students to take some of the courses offered at IUHW and graduate schools. With networking events also available for international students, JLP offers opportunities for students to lead an enriching campus life.

Features

1

Customized Academic Guidance

All classes have homeroom faculty. Experienced faculty provide meticulous guidance.

3

Tailored Guidance on Post-completion Plans

Various supports are available to make students' post-completion plans.

2

Extensive Supports

Extensive supports are offered for students' academic and personal needs.

4

Japanese Language Program by University Specializing in Health and Welfare



Classroom scene



Ohtawara City Industry and Culture Festival 2016

Curriculum

- One-year program*: The university will confer certificates of completion to students whose completion of the program was approved.
- Spring semester (April-September) and Fall semester (October-March). Applications are accepted twice a year.
- Length of courses in a semester: 18 weeks

*Students wishing to continue their studies can enroll up to two years.

Admission Requirements

- Applicant should be a non-native speaker of Japanese and be able to obtain a Certificate of Eligibility for resident status.
- Applicant must have completed at least 12 years of basic education in a country outside Japan, or have the equivalent education (this condition should be met before entering JLP).

*For more information on applying, see the Application Guideline.

Credited Auditor System

Students who satisfy the Japanese language proficiency and other requirements may take some courses that are offered at IUHW undergraduate or graduate schools. In addition, tuition will be waived for up to three courses per semester. If students qualify for credit under this program, in some cases the credit will be counted if and when they enroll in IUHW undergraduate and graduate schools.



International Students

Features

1

University to foster health, medical, and welfare professionals

2

One of the few universities with entrance exam intended for international students in the health, medical, and welfare fields

4

Various supporting system for international students

- Undergraduate students with student visa can receive waivers of up to half of their tuition and course fees (other fees apply). To some extent, the waiver of school expenses for graduate students is also available.
- International students with IUHW Bachelor's Degree who intend to study further at IUHW Graduate School are to be remitted all of their entrance fee.
- Several private agencies and local autonomous bodies offer various types of scholarships for international students.
- When students join the National Health Insurance, 70% of their medical bills are covered by the insurance. In addition, the IUHW Education mutual aid can support the students by covering the rest of the 30%, which means there is no need for international students to worry about medical expenses. For that privilege, each undergraduate pays 30,000 yen per year to the mutual aid, which is compulsory. However it is optional for graduate students.
- Student Dormitory (conditions of use apply)
- For details, please consult the school staff responsible for this matter.

3

A career path where students can attain national medical qualifications and then work in Japan

Qualifications to obtain a medical care visa: Doctor, Pharmacist, Nurse, Public Health Nurse, Physical Therapist, Occupational Therapist, Orthoptist, Radiological Technologist

Mr. Dang Thanh Huy
From Socialist Republic of Viet Nam
2nd year student in Faculty of Medicine, Narita Campus

Center for International Students

At Ohtawara and Narita Campus, there are sections called International Exchange Center, where dedicated staff offer assistance to international students. The following is a list of what is offered at the center.

1. Japanese Language Classes

Teachers who specialize in Japanese language offer Japanese classes to international students. They offer not only classes but also any help and support concerning language problems the students might face.

2. Visa

When students need help in applying for and acquiring a visa, extending and renewing their visa, and for permission for other activities, the center staff is always there to help them.

3. Housing

Students are advised to contact the Center regarding housing. The City of Ohtawara has its own housing policy, and international students are welcome to stay in city-owned apartments at affordable rate. International students of Narita Campus live in IUHW dormitory called "Narita International House."

4. Exchange Parties

The center plans parties for international students, so that they can get to know each other and learn to support one another. Japanese students are also invited, so that students on campus, regardless of nationality, can all be good friends.

Special Entrance Examination for International Students

Screening: Every applicant is required to take the Examination for Japanese University Admission for International Students (EJU), and essay written in Japanese. Each applicant will be interviewed by faculty members.

Qualification:

Applicants should fulfill the following conditions.

- Non-Japanese citizen and age 18 or over
- 12 years of education outside Japan, and with student visa to stay in Japan
- Japanese language proficiency to be able to attend classes taught in Japanese

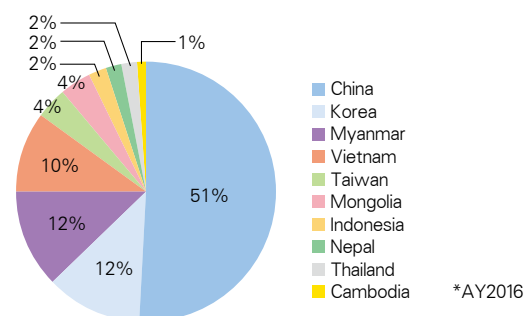
The above requirements will vary. For the latest and precise information, please contact the admissions office.

Campus Calendar

The school year begins in April, and there are two semesters in a year.

April	Entrance ceremony / Orientation Beginning of the first semester
May	Founders' Day (Holiday for IUHW) Sports Day
July	Final examinations for the first semester Completion of the first semester (at the end of the month) Summer vacation
September	Beginning of the second semester (at the end of the month)
October	Exchange party / School Festival
December	Christmas Party / Winter vacation
January	Final Examinations for the second semester Completion of the second semester(at the end of the month)
February	Spring vacation
March	Graduation ceremony

National/Region Origin and Enrollment ratio of International Students



Active International Exchange



Overseas Partner Universities and Facilities

IUHW has signed partnership agreements with 41 institutions in 23 countries/regions. (as of March 2018)

Department of International Relations and International Exchange Center of IUHW plan and operate international projects, and collect relevant overseas information. We also manage a variety of international exchange activities such as accepting short-term trainees from China and other countries, and provide overseas training courses for IUHW students.

	Country / Region	Affiliated partners
Universities	Taiwan	Yuanpei University of Medical Technology
	Thailand	Faculty of Public Health, Mahidol University
		Christian University of Thailand
	USA	University of Hawai'i Kapi'olani Community College
		Mayes College of Healthcare Business and Policy, University of the Science in Philadelphia
		University of Colorado Denver College of Nursing
		School of Medicine, University of Pittsburgh
	China	Capital Medical University, School of Rehabilitation Medicine
		Chinese Academy of Sciences
	Korea	Konyang University
		Inje University
		Daegu Haany University
		Eulji University
	Myanmar	University of Medicine 1, Yangon
		University of Medical Technology, Yangon
		University of Nursing, Yangon
		University of Medicine 2, Yangon
	Vietnam	University of Medicine and Pharmacy, Ho Chi Minh City
		Hanoi Medical University
		Hue University of Medicine and Pharmacy

	Country / Region	Affiliated partners
Universities	Australia	Griffith University
	New Zealand	The University of Otago
	Singapore	Singapore Institute of Technology
	Mongolia	Mongolian National University of Medical Sciences
	Laos	University of Health Sciences, Lao PDR
	Indonesia	University of Udayana
	Malaysia	Management & Science University
	Philippines	University of the Philippines Manila
	Spain	University of Alcalá
	Cambodia	University of Health Sciences, Cambodia
	UK	University of East Anglia
	France	Faculty of Medicine, Université Paris-Sud
	Hungary	Semmelweis University
	Russia	I.M. Sechenov First Moscow State Medical University
	Finland	University of Helsinki, Faculty of Medicine
	Poland	Wroclaw Medical University
Institutions	China	China Rehabilitation Research Center
	Australia	TAFE Queensland
Hospital	Singapore	Nanyang Polytechnic
	Vietnam	Cho Ray Hospital
		Bach Mai Hospital

Various Forms of International Exchanges and Cooperative Activities

Fostering Medical Specialists to become Leaders in Asian Countries

IUHW School of Medicine Special Scholarship Student Program for Overseas Medical Students

At the School of Medicine that opened in April 2017, we have established a special scholarship student program for overseas medical students for the purpose of accepting outstanding students from overseas. Memoranda of understanding have so far been concluded with governments and universities in the six countries of Vietnam, Mongolia, Myanmar, Indonesia, Laos and Cambodia. This program provides scholarship funding for the full six years of study at the School of Medicine through to graduation, and covers enrollment fees, tuition fees, teaching material fees and living expenses. The aim of this program is for scholarship students to gain a Japanese medical license, and after having gained clinical experience in IUHW-affiliated hospitals and other institutions, to return to their home countries to contribute to the development of health and medical care. The scholarship students that joined the program in AY2018 are enjoying a fulfilling life on campus, while receiving IUHW's innovative medical education.

IUHW Scholarship Program

Based on the intention to contribute to the development of human resources who will become leaders in the medical and welfare fields in Asian countries, IUHW has established its own scholarship program, which covers the full tuition fees and other expenses for students from Asian countries. International students in this program are obliged to return home as soon as they graduate and take on leadership positions in their relevant fields to contribute to the development of medical and welfare services in their home countries, thereby affirming the effectiveness of the program objective. IUHW has accepted many international students from countries in Asia, such as Vietnam, Myanmar, Mongolia, Cambodia, Laos, and others. This program is strongly supported by the "Asia-Pacific Ladies Friendship Society," which cooperates in selecting international students to be awarded scholarships.

Academic Exchange Agreements

IUHW is actively engaged in international exchange, including the conclusion of academic exchange agreements with universities overseas. Currently a total of 41 agreements are in place with universities, institutions and hospitals in 23 countries and regions (Thailand, Myanmar, Vietnam, Singapore, China, Taiwan, South Korea, Australia, United Kingdom, Hungary, Russia, United States, etc.). Through these agreements both academic staff and students are engaging in mutual exchange visits and study tours.

Telepathology and Telediagnosis Projects

Under the auspices of the international medical alliance project promoted by the Ministry of Economy, Trade and Industry (METI), from FY2011 IUHW successfully implemented telepathology and telediagnosis projects in China and Vietnam, and in FY2014 conducted an empirical research project relating to the construction of telediagnosis and training centers in Vietnam and Myanmar.

By combining Japan's outstanding diagnostic technologies, advanced examination equipment technologies, and communication technologies, these projects have resulted in the deployment of telepathology and telediagnosis systems in Asian countries where there is a shortage of specialists in the fields of pathology and diagnostic imaging.

In Myanmar, the University of Medicine 1, Yangon, and IUHW Mita Hospital were connected using a private line to conduct telediagnosis on various cases. Based on results and experiences gained from these projects to date, IUHW-affiliated hospitals will continue to engage actively in technical exchange and medical assistance, working with partner institutions overseas.

International Medical Symposium

In October 2016 an international medical symposium was held in Tokyo, with participants including the Vietnamese Minister of Health and Myanmar's Permanent Secretary of Ministry of Health and Sports, who were joined by representatives of universities and medical institutions that have academic exchange agreements with IUHW from Vietnam, Cambodia, Laos, Myanmar, China and Mongolia. The theme for the symposium was "Future Perspectives for International Medical Cooperation and Medical Education in Asian Countries and in Japan" and the 20 participants, including government and university representatives from Japan, heard keynote speeches and engaged in panel discussions, engaging in fruitful exchanges about challenges for medical development and the fostering of international medical professionals.

Grasping the opportunity provided by the establishment of the School of Medicine at IUHW, we will continue to hold regular symposiums on international medical education, seeking to engage in vigorous discussions with our partner schools and institutions overseas and officials in the medical field from Asian countries as part of our efforts to further enhance medical education.

Promotion of Overseas Medical Cooperation

IUHW also actively promotes international medical cooperation with Vietnam and Myanmar. In Vietnam, in cooperation with the Cho Ray Hospital with which IUHW has had a partnership for approximately 20 years, IUHW is planning to open a medical examination center, which will provide Japanese-style medical checkup services. In Myanmar, IUHW provides technical and academic assistance to the National Rehabilitation Hospital in Yangon. Furthermore, in 2017, IUHW donated the latest rehabilitation equipment to the National Rehabilitation Hospital and dispatched teaching staff to Myanmar to provide training and instruction on its use. For the purpose of human resources development in the health and medical fields, every year IUHW also actively accepts short-term trainees from these countries as well.



Signing ceremony for MOU with Mongolian National University of Medical Sciences on School of Medicine's scholarship students



IUHW scholarship award ceremony



Signing ceremony with Hue University of Medicine and Pharmacy of Vietnam



International medical symposium held with representatives invited from Asian countries



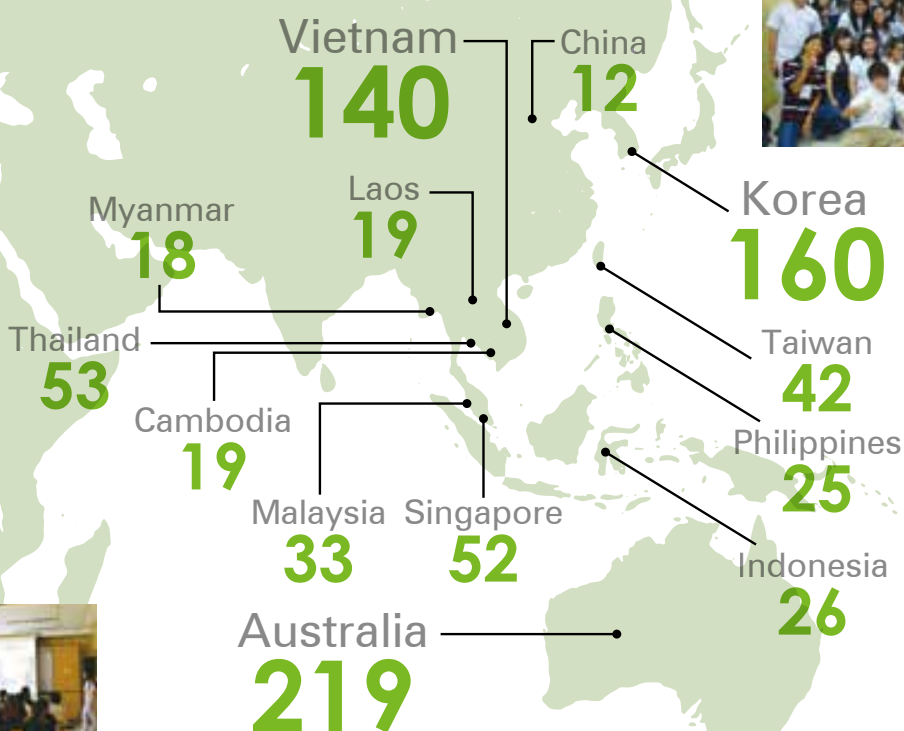
Conceptual drawing of the completed medical checkup center in Vietnam

General Education Subjects: Overseas Training Program

After pre-visit courses in Japan, students travel and study different cultures, medical health care and welfare at overseas partner's medical institutions, welfare facilities, universities and other relevant facilities for approximately two weeks during either summer or winter holidays. Under the guidance of local medical staff, they acquire valuable experiences by being involved in actual medical settings in foreign countries and regions. During AY2017, 827 students trained at actual international medical, health and welfare facilities in various countries such as Australia, Korea and Vietnam.

827 Students

went overseas to experience medical welfare on the scene in the academic year of 2017.



International Students Studying at the IUHW

Ms. Kim Hyejung

From Republic of Korea
1st year student in Department of Nursing,
Narita Campus



I chose to study nursing in Japan, where I can acquire the highest medical technology to achieve my goal, to play active roles vigorously in cases of disasters and in emergencies. I am indebted to the University from the very beginning, the time I made arrangements for my accommodation and even now, I am courteously supported through costs of living. I aspire to become a cosmopolitan nurse, which I will make come true by endeavor of deep engagement in both study and work.

Ms. Guo Wenye

From People's Republic of China
1st year student in Department of Medical Technology,
Okawa Campus



What attracted me the most about IUHW are the facts that the faculty is composed of globally renowned experts who are active in the very front lines and the curriculum using state-of-the-art medical equipment. The people of Japan, being so kind, is another factor of my attraction. I dream of becoming a medical technician, with strong focuses on clinical laboratory pathology, clinical laboratory immunology and clinical laboratory physiology. In the future, I wish to support Chinese patients landing to Japan for medical examination and to create a bridge between Japan and China.

Volunteer Activities

IUHW encourages students to participate in volunteer activities, by sharing one's time and talent, by communicating with others which are required of medical and welfare service professionals.

In the university, there are about 30 active volunteer groups.



Participation in tree-planting ceremony

Volunteer Activities after the Great East Japan Earthquake

Support in affected areas still continues in various forms.



Interacting with residents of temporary housing

Volunteer Activities at Medical and Welfare Facilities on Campus

Students interact with facility users at the medical and welfare facilities on campus.



Volunteer Activities at Hospitals



Students engage in helping outpatients, assisting the hospital staff, and cleaning at the IUHW affiliated hospitals.

Welfare-related Events



Students plan a variety of events.

Concerts

Chorus groups hold concerts at hospitals and welfare facilities.



International Volunteer Activities

Students engage in activities related to international health and international cooperation.



IUHW Volunteer Center (at Ohtawara Campus)

The Volunteer Center supports students who would like to participate in these volunteer activities. The Center also plans and carries out lectures by volunteers active in Tochigi Prefecture and events to promote exchanges with students from other universities.

University Campuses and Access

Ohtawara Campus in Tochigi Prefecture



URL <http://www.iuhw.ac.jp/>
E-mail nyushi@iuhw.ac.jp

2600-1 Kitakanemaru, Ohtawara City, Tochigi 324-8501
Admission Office: Tel. +81-287-24-3200 Fax. +81-287-24-3199

JR Sendai Station	JR Tohoku Shinkansen 70min	JR Nasushiobara Station	School Bus 20min	Ohtawara Campus
JR Tokyo Station	JR Tohoku Shinkansen 70min			
JR Ueno Station	JR Tohoku Honsen (Utsunomiya-sen)	JR Nishinasuno Station	City Bus 30min	

Narita Campus in Chiba Prefecture



URL <http://narita.iuhw.ac.jp/>
E-mail narita-nyushi@iuhw.ac.jp

4-3 Kozunomori, Narita City, Chiba 286-8686
Admission Office: Tel. +81-476-20-7705 Fax. +81-476-20-7702

JR Tokyo Station	JR Sobu Express Line 23min	JR Funabashi Station	Walk 5min	Keisei Funabashi Station	Narita Campus
				Keisei Line Express 37min	
JR Chiba Station	JR Rapid Airport Narita 36min	JR Narita Station		Keisei Kozunomori Station Walk 1min	
JR Toride Station	JR Joban Line 10min			Keisei Line 3min	
		JR Abiko Station	JR Joban/Nrta Line 45min	Keisei Narita Station Walk 5min	

Tokyo Akasaka Campus



URL <https://akasaka.iuhw.ac.jp/>
E-mail akasaka-nyushi@iuhw.ac.jp

4-21-26 Akasaka, Minato-ku, Tokyo 107-8402
Admission Office: Tel. +81-3-5574-3903 Fax. +81-3-5574-3904

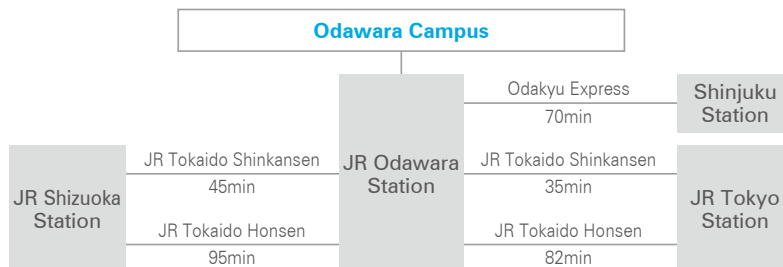
JR Tokyo Station	Tokyo Metro Marunouchi Line approx. 8 mins.	Akasaka-mitsuke Station	Walk 3min	Tokyo Akasaka Campus
JR Shinjuku Station	Tokyo Metro Ginza Line approx. 8 mins.			
JR Omiya Station	JR Shonan-Shinjuku Line, via JR Shinjuku Station approx. 50 mins			
JR Chiba Station	JR Sobu Line (Rapid), via JR Tokyo Station approx. 50 mins.			

Odawara Campus in Kanagawa Prefecture



URL <http://odawara.iuhw.ac.jp/>
E-mail od-nyushi@iuhw.ac.jp

1-2-25 Shiroyama, Odawara City, Kanagawa 250-8588
Admission Office: Tel. +81-465-21-0361 Fax. +81-465-21-6501

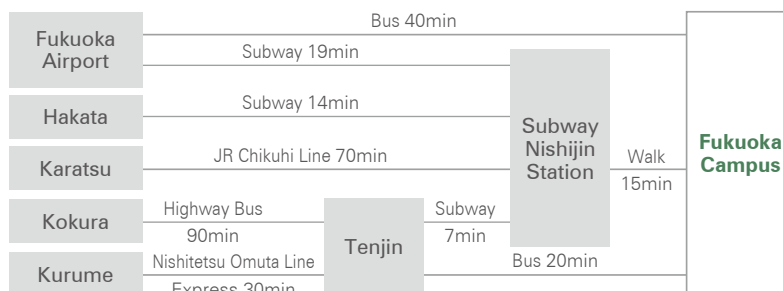


Fukuoka Campus in Fukuoka Prefecture



URL <http://fukuoka.iuhw.ac.jp/>
E-mail fkango-nyushi@iuhw.ac.jp

1-7-4 Momochihama, Sawara-ku, Fukuoka City, Fukuoka 814-0001
Admission Office: Tel. +81-92-407-0805 Fax. +81-92-407-1814

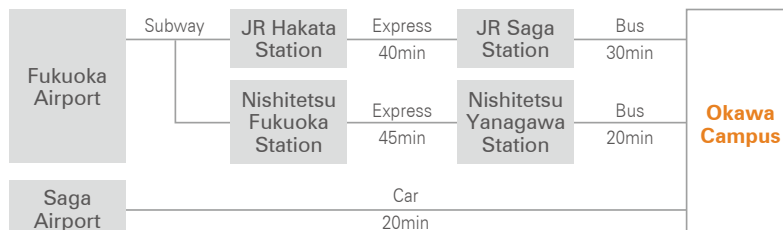


Okawa Campus in Fukuoka Prefecture



URL <http://fukuoka.iuhw.ac.jp/>
E-mail okawa-nyushi@iuhw.ac.jp

137-1 Enokizu, Okawa City, Fukuoka 831-8501
Admission Office: Tel. +81-944-89-2000 Fax. +81-944-89-2001





CONTACT US

Ohtawara Campus in Tochigi Prefecture

Tel. +81-287-24-3200

E-mail nyushi@iuhw.ac.jp

Narita Campus in Chiba Prefecture

Tel. +81-476-20-7705

E-mail narita-nyushi@iuhw.ac.jp

Tokyo Akasaka Campus in Tokyo

Tel. +81-3-5574-3903

E-mail akasaka-nyushi@iuhw.ac.jp

Odawara Campus in Kanagawa Prefecture

Tel. +81-465-21-0361

E-mail od-nyushi@iuhw.ac.jp

Fukuoka Campus in Fukuoka Prefecture

Tel. +81-92-407-0805

E-mail fkango-nyushi@iuhw.ac.jp

Okawa Campus in Fukuoka Prefecture

Tel. +81-944-89-2000

E-mail okawa-nyushi@iuhw.ac.jp

www.iuhw.ac.jp

INTERNATIONAL