

for UNDERGRADUATE

The three undergraduate degree courses in English provide students with a solid foundation in their chosen area and exposure to cutting-edge research at Tohoku University, which is designated the first and only University for International Research Excellence by the Japanese Government.

Admission October

Contact Admission Division, Tohoku University

AMC



WEB: web.tohoku.ac.jp/amc/

Advanced Molecular Chemistry

AMC offers fundamental chemistry curriculum emphasizing materials science.

Degree: SCIENCE

Topics Covered

Materials Chemistry / Chemical Biology / Physical Chemistry / Molecular Biophysics / Synthesis and Catalysis / Analytical Chemistry and Sensors / Nucleic Acid Chemistry / Bio-imaging, etc.



IMAC-U



WEB: imac.mech.tohoku.ac.jp/

International Mechanical and Aerospace Engineering-Undergraduate

IMAC-U provides a world-class research environment for studying mechanical engineering.

Degree: ENGINEERING

Topics Covered

Mechanical Systems Engineering / Nanomechanics / Bioengineering / Robotics / Aerospace Engineering/ Quantum Science and Energy Engineering / Environment and Energy Engineering / Biochemical Engineering, etc.



AMB



WEB: agri.tohoku.ac.jp/amb/

Applied Marine Biology

AMB emphasizes research application for aquacultured marine animals and plants.

Degree: AGRICULTURE

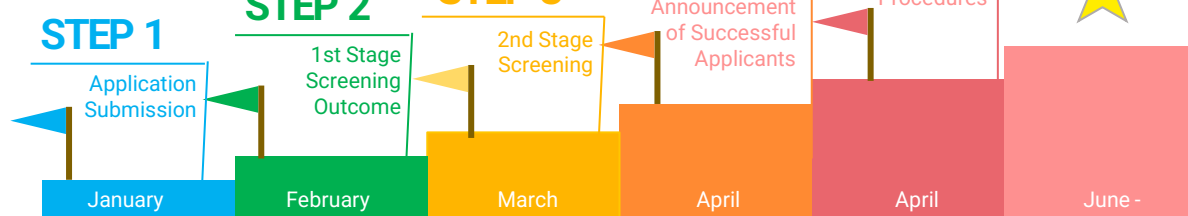
Topics Covered

Marine Ecology / Marine Biochemistry / Fish Genomics / Conservation Biology / Marine Biotechnology / Informatics, etc.



Admissions Steps

FGL Application Guide



Please find the important dates and requirements for the application in “Application Guide for 2026 October Enrollment” on the FGL homepage around May.

Academic Requirements

- Official English Test Score TOEFL iBT® 79+ or IELTS Academic 6.0+
- Scores of Standardized Examinations (e.g., EJU, ACT, AP, GCE-A Level, IB, etc.) in Mathematics, Physics, and Chemistry
 - * For AMB, Mathematics and two science subjects among Physics, Chemistry, and Biology
 - * EJU scores will be accepted regardless of whether the exam was in English or Japanese.

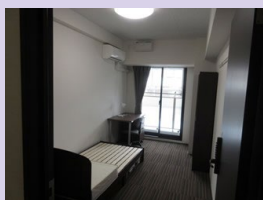
Financial Aid

Students who achieved excellent scores on the entrance examination may be able to receive any of the scholarships below. Please check the application guide for details.

- *Japanese Government (MEXT) Scholarship* (University Recommendation)
- *Tohoku University President Fellowship* (the equivalent amount of exam, entrance, and tuition fees)
- *MEXT Honors Scholarship for Privately Financed International Students*

Housing

University dormitory will be reserved for the first and second years FGL students.



Furnished Private Room/ Common Area: Dining-Kitchen, Bathrooms, and Laundry

Student Support

- Tutor System (Buddy)
- Student Learning Advisor System
- Student Counseling
- Help Desk
- Extracurricular Activities, etc.



Career Paths

>70% of the students go to graduate schools (e.g., Tohoku University, Chicago, MIT, Cambridge, etc.) for higher degrees.

Some of them work for JPN companies (e.g., Toyota, Nissan, Hitachi, Canon, Mitsubishi Materials, Fuji Film, etc.) after master courses.

Looking forward to seeing you at TOHOKU UNIVERSITY!

FGL Undergraduate Courses Website



Gateway College



SNS

