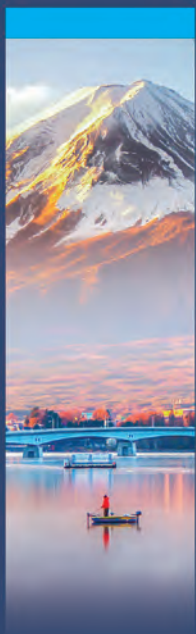




International
College of
Liberal Arts

STUDENT GUIDE

2023



CONTENTS

Life in Japan	2
About iCLA	4
Academics	6
Career Support	10
Study Abroad	11
Global Partners	12
Student Life	14
How to Apply	16
What Happens Next	17



iCLA AT A GLANCE

5:1

Student To Faculty Ratio

40+

Nationalities

88%

of Full Time Faculty
Members Educated
Overseas



66%

International Students

70+

Partner Universities

90min

From Central Tōkyō



LIFE IN JAPAN

日
本
の
生
活

The International College of Liberal Arts is located in Kofu City, the capital of Yamanashi Prefecture, Japan.

Japan is an increasingly popular study destination because of its high standard of education, safe environment, unique cultural heritage, ongoing efforts to globalize, and welcoming support for international students. Japan's capital Tōkyō is the largest megacity in the world and consistently at the forefront of many cutting-edge developments in fashion, technology, and design. As Japan is one of the leading economies in Asia; with Japanese companies active across the world, gaining a degree from a Japanese university sets you up for a great career world-wide. International students in Japan have generous allowances for part-time work, allowing them to gain hands-on experience of Japanese corporate culture.

Conveniently located just a 90-minute train ride from the center of Tōkyō, Yamanashi has many things to see and do. Yamanashi is most famous for being the home of Mount Fuji, and there is

no better view of Mount Fuji than from the Fuji Five Lakes area. The abundance of nature and long hours of daylight make Yamanashi ideal for outdoor activities like hiking, cycling, or running. The picturesque landscapes of Yamanashi are the perfect location to enjoy the varied beauty of Japan's four seasons. If you prefer other leisure activities, many events like craft markets, cultural parades, and fireworks festivals are held throughout the year.

Whether it is delicious food, exciting activities, or unique events that interest you, there is something for everyone in Japan. Merging the ancient and the modern, from its bustling metropolises to its serene natural spaces, the enduring allure of Japanese cuisine, art and culture continues to delight and fascinate generations of visitors to Japan's shores. Come and experience it all for yourself at iCLA.



山梨県 YAMANASHI
PREFECTURE



Whether it is
delicious food,
exciting activities,
or unique events that
interest you, there
is something for
everyone in Japan!



**The International
College of Liberal Arts
(iCLA) at Yamanashi
Gakuin University
is a four-year
liberal arts college
where the language
of instruction
is English.**



Students can choose from a wide array of courses as part of an innovative curriculum which leads to a bachelor's degree in International Liberal Arts. iCLA offers students a unique opportunity to immerse themselves in Japanese culture while acquiring a contemporary and globally relevant education at our state-of-the-art facilities. We have faculty and staff members from around the world to support students in their academic journey.

LIBERAL ARTS

Our unique liberal arts curriculum spans a variety of subjects like political science, business and economics, language arts, to name a few. The wide-ranging spectrum of subjects under liberal arts prepares students with the essential skills to become well-rounded individuals who think critically, creatively, independently and globally, and are able to adapt in the workplace and the world.

Reasons why you should study liberal arts with us:

- Our curriculum offers a broad foundation while also allowing students to go in-depth in their declared major.
- An interdisciplinary and multidisciplinary approach to education that helps students comprehend multiple viewpoints.
- Small class size and close student-faculty interaction offer an environment uniquely suited to nurturing academic excellence and student growth.
- An active learning environment where you are exposed to other viewpoints and encouraged to assess your own.
- Focus on academic skills, including multi-faceted communication and teamwork skills that will help students prepare for future graduate studies and career success, including a heavy emphasis on class participation, academic writing, and development of critical thinking skills.

YAMANASHI GAKUIN UNIVERSITY

Established in 1946, Yamanashi Gakuin University has over 70 years of history educating exceptional students. Today, it is nationally renowned for achievements in sports and has produced numerous Olympic athletes and coaches. The university student body totals over 3,900 students across the undergraduate and graduate faculties. The language of instruction is Japanese in all faculties except iCLA. iCLA is one of the newest undergraduate faculties of Yamanashi Gakuin University, and it is one of the most diverse programs in Japan, with over 60% international faculty and a curriculum taught in English.

The university offers the following programs:

Undergraduate:

Main Language of Instruction: English

- International College of Liberal Arts (iCLA)

Main Language of Instruction: Japanese

- Faculty of Law
- Faculty of Business Administration
- Faculty of Health and Nutrition
- Institute of Sports Science

Graduate

Main Language of Instruction: Japanese

- Graduate School of Social Science

ACADEMICS

There are many elements that give the iCLA curriculum its unique character. One extremely important factor is our dedication to the philosophy of liberal arts education. A liberal arts education contains both depth and breadth, as students study a variety of disciplines while acquiring a deep understanding of their chosen major.

Positive elements of a liberal arts education include the development of critical thinking, collaboration, communication, and creative problem-solving skills, all of which bring an important well-roundedness to student education that is lacking in other styles of learning. Student learning experiences are enhanced by the small student to teacher ratios which allows for close interaction between students and faculty, and attention to student progress over time.

MAJOR AREAS OF STUDY:



GLOBAL BUSINESS AND ECONOMICS



POLITICAL SCIENCE



INTERDISCIPLINARY ARTS



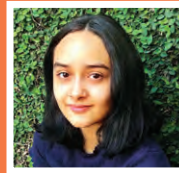
JAPAN STUDIES



"I chose economics as my major because I find it pertinent in all levels of society: individual, national, and international. Furthermore, I find it very interesting how economics formulate social observations into theories and equations to solve what are fundamentally social problems. Particularly, I enjoy studying environmental economics, and I believe that this discipline is vital and relevant to today's environment discourse."

After graduating from iCLA, I will be attending a graduate program in the Netherlands focusing on environment and resource management, which incorporates economics and policy-making. I aim to pursue a career in environmental consulting after my graduate studies."

Didian, Indonesia — *Global Business and Economics Major*



"iCLA has an incredible confluence of cultures and customs created by its diverse international student body. In our Political Science classes, the unique perspectives I acquire from my classmates' differing points of view and the comfortable environment that the teacher creates for us to express our opinions really characterizes iCLA."

My nation has faced many political and social upheavals involving Human Rights disruptions. This has enhanced my interest in encouraging ideological change and strengthening the protection of rights in my country and worldwide. iCLA's Political Science Major will make it possible for me to become a future inciter of communication and peace among countries, promoting the reduction of injustice in the world."

Andrea, Nicaragua — *Political Science Major*



"I believe that creativity is the skill of the future. Creativity not just in the sense of producing visual artworks, but also in problem-solving and critical thinking. In every artwork or design, research and process are often overlooked. Having knowledge in various disciplines allowed me to analyze problems or issues with a different perspective; and having that diverse view is essential in ideation of great ideas which any technology or artificial intelligence cannot take over soon."

With my major, I was able to involve myself in projects that sparked my creative growth, while also understanding more about different cultures and concepts and how these [things] should be reflected in any creative work."

April, Philippines — *Interdisciplinary Arts Major*



"I plan to stay in Japan long-term so Japan Studies has value to me. It helps me to understand Japan's culture and history, which I have a particular passion for, in far better detail. Learning about Japan's history, I draw many parallels between its sudden rise and China's, which I believe is of import

as Japan will desire to build better relations with China in the near future."

I plan to either begin teaching or go into IT after graduating, or simply continue with graduate studies, all of which pose no significant barriers having studied this major."

Lok, Malaysia — *Japan Studies Major*

GLOBAL BUSINESS AND ECONOMICS



The Global Business and Economics major offers a blend of application and theory, utilizing an applied approach to Business to train future business leaders who deeply understand the interplay between business and society. Our program hones the knowledge and skills associated with the liberal arts and their importance for business such as communication, social, cultural and geopolitical context, ethics, teamwork and critical thinking.

With academic pathways leading to careers in Finance, International Business, and Economics, all courses are studied from a global perspective, giving students the ability to leverage their knowledge of Japanese business culture and prepare for a vocation either in Japan or internationally. All three pathways are embedded in a liberal arts approach that stresses taking a humane point of view, criticality, social responsibility and intellectual depth.

POLITICAL SCIENCE



Questions concerning government policies aimed at achieving economic stability and growth, the gap between the rich and poor, the role of NGOs to affect social and political change, the relations between countries, crises in our democratic institutions, and the path to world peace are all on the research agenda of contemporary political scientists.

Offering academic pathways for students interested in International Relations, Comparative Politics, and Public

Administration, iCLA's Political Science major addresses the fundamental problems facing human society.

Through varied learning and assessment methods, students develop a deep understanding of political science, its various sub-fields, major themes, and analytical techniques leading to enriching careers in local or national government, government services, social enterprise, the NGO sector or academia.

INTERDISCIPLINARY ARTS



Interdisciplinary Arts is an exciting major where students gather inspiration from multiple sources including visual art (Fine Art and Graphic Design), music (Audio Engineering, and Digital & Sonic Art), language arts (Creative Writing, Literary Analysis, and Linguistics), and performance (Film and Theatre). Students gain a rich understanding of their chosen specialization and work through the medium of a wider creative process by exploring these disciplines from practical, theoretical, and historical perspectives.

If you wish, you can choose to pursue a Japan studies theme through Interdisciplinary Arts, with courses in Japanese theatre, film, art and crafts, manga, anime, literature, and culture to help you get the most out of this extraordinary country. The interdisciplinary nature of a Liberal Arts education guarantees that students graduate with the transferable skills valued by employers and skills required to succeed in any role in addition to technical knowledge gained in their artistic field.

JAPAN STUDIES



Japan Studies endeavors to investigate and deconstruct the intricacies of Japan by providing students with a comprehensive understanding of this fascinating country, its language and its history. Students can explore Japan's society, politics, international relations and economics, developing a deep understanding of how Japan became the country it is today and its global position in the future. The major also gives students the opportunity to experience Japan's unique

arts, literature and culture, from traditional music and theatre through to contemporary anime and manga.

In a true expression of the interdisciplinary nature of iCLA's curriculum, Japan Studies draws on courses from across our whole curriculum to provide a complete learning experience. Tailored study plans can lead our graduates to fluency in Japanese and career opportunities in the media, Japanese corporations, the tourism sector, and academia.

ACADEMICS (continued)



ELECTIVES & WORKSHOPS

Elective courses and workshops supplement academic majors throughout the four years at iCLA, providing the breadth, flexibility, and interdisciplinary nature of true liberal arts education and expanding career opportunities in a multitude of directions. Electives can be chosen from any of the majors, or from our courses in:

Japanese Language

Our international students have the opportunity to reach a high level of proficiency in Japanese by the time they graduate, even if they join iCLA with little or no Japanese language ability. Courses are divided into three levels: Elementary, Intermediate, and Advanced. Our students are able to deepen their understanding of Japanese culture while discussing various cultural and social topics in Japanese.

Data Science

To create a more informed, advanced and equitable society, tomorrow's leaders must be trained in understanding, assimilating, interpreting and communicating information within the medium of data. With an emphasis on enhancing the knowledge students acquire in their major areas of studies, students can gain practical know-how of statistical data, programming and analytic methods. The Data Science module first facilitates students' understanding of various data forms, then teaches them to communicate meaning via the skills of data visualization, summarizing and the critical analysis of data patterns. Students who wish to pursue a career or higher degree in data science can enroll in our advanced courses in machine learning and deep learning. The field of data science is fuel for the 21st century, allowing those informed to access a lucrative career and directly participate in changing the world.

Quantitative Reasoning & Natural Sciences

In conjunction with our Data Science module, these courses nurture scientific inquiry and Quantitative Reasoning to provide the mathematical background required for programming. Our courses in Mathematics emphasize the development of mathematical and quantitative reasoning skills. Students gain an understanding of fundamental, numerical, and quantitative skills and their application to everyday life. The focus will be on applying basic mathematical concepts to solve real-world problems, and to develop skills in interpreting and working with data in order that students become able to function effectively as professionals and engaged citizens. The course on Earth Science examines planet earth, its nature in terms of its interactions and exchanges between atmosphere, land, living things and physical laws.

Sociology & Psychology

An important supplement to many of our majors, these courses aim to develop students' understanding of human behavior and motivation, social and cultural identity, and individual development and interactions with societies and culture. In those courses, students examine evidence and factors that influence behavior to form conclusions about social phenomena. They also develop basic skills in the scientific method of social inquiry and are able to identify both psychological and sociological terms, concepts, ideas and theories, relating them to human behavior and individual experiences.



These courses act as a pathway to further education, training and employment for careers in which an understanding of the behavior of individuals, groups and institutions is a key element, such as human resources, education, health and community work, journalism and media studies.

Health & Physical Education

The iCLA Courses in Health & Physical Education include three martial arts, Aikido, Judo, and Karate, as well as Nanba: the Japanese Art of Physical Finesse, and Shugendo: Mountain Shamanism. All of our Health and Physical Education Courses are closely connected to Japanese culture, and emphasizes integrating the mind and body. Each course is taught by an experienced Master of the discipline, all with international recognition. We have a beautiful Dojo at iCLA, and access to some of the best athletic facilities in Japan on the Yamanashi Gakuin University Campus.

Workshops

Experiential learning workshops offer unique opportunities to gain hands-on experience in a range of cultural, practical, and creative areas of study. The Interdisciplinary Arts and Japan Studies majors feature workshops within their relevant disciplines. Among the huge variety of workshops offered at iCLA, students can experience traditional Japanese music, arts, and culture such as Noh Theatre, Shakuhachi (bamboo flute) and Koto (Japanese harp), Sado (tea ceremony), Kado (flower arrangement), as well as the Japanese martial arts of Aikido, Judo, and Karate.

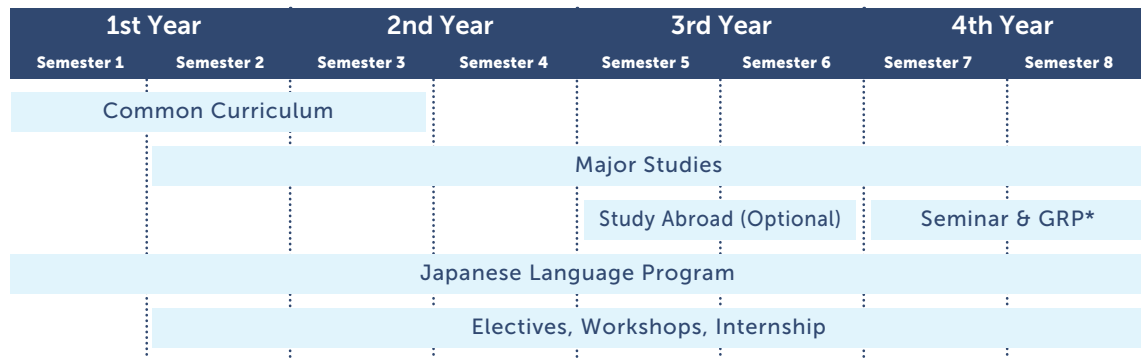
Want to know more?



For full details of the over 130 courses available at iCLA head to our Curriculum Course List.



STUDY FLOW CHART



*GRP: Graduation Research Project



CAREER SUPPORT

Providing students with the skills and knowledge to build their future career and preparing them for long-term success is one of our highest priorities. Our faculty and staff provide close support to students looking to explore their career prospects and expand their professional networks.

One-to-one career counseling from our faculty members is available to our students throughout their degree, and career support lectures aimed at developing skills and knowledge for job hunting in Japan are held annually.

In our Career Design courses, students receive support from our faculty members who have extensive experience in career guidance, and students learn effective and practical skills that prepare them for employment after graduation.

Career Design courses help students better understand their own strengths, skills, and career interests; building on the Critical, Creative, Independent and Global mindset nurtured at iCLA to identify what career they want to pursue, as well as the steps to achieving that career goal.

iCLA also supports students in finding internship opportunities. By participating in an internship, students can gain practical experience relevant to their interests.



"iCLA truly supported me in discovering my dream career in finance. iCLA's curriculum covers a wide range of subjects, from economics to performing arts. Through exploring those courses, I was able to discover my interest in my chosen career. Moreover, the professors, students (including exchange-students), and admin staff are always willing to talk and share their academic and professional experiences. These interactions helped me understand better the real aspects of working life. Our Career Design course also taught me how to find my passion, suitable jobs that fit with that and how to prepare to earn those jobs. My economics professors also helped me assess the companies I wanted to apply to and find out further information about them. Their advice has been invaluable.

In addition to my first internship at FUSO Academy, part of Mitsubishi Fuso Truck and Bus Corporation, my second internship at Aristagora Financial Advisors really helped to shape my career path. My professors supported me in evaluating this opportunity and preparing for my interview. After starting their internship program I was quickly taught plenty of useful skills and professional knowledge. Aristagora is a boutique financial firm, so I was able to challenge myself with many different tasks. I could see myself maturing at work every day. Moreover, the firm offered me an international environment, which allowed me to apply and enhance the social skills I had learned at iCLA."

Hue, Vietnam
iCLA Graduate working in Finance



STUDY ABROAD

iCLA offers you the opportunity to truly expand your world perspective with our Study Abroad Program. You can develop leadership skills, versatility, and cultural awareness, all of which are valuable life skills and indispensable in a modern global workplace.

We have a growing network of partnerships with currently 70 universities in over 30 countries and regions, so you can find an exchange destination that best fits your goals and interests.

All of our study abroad partnerships are based on mutual tuition waiver agreements, so students continue to pay iCLA tuition fees, no matter which country they choose for their study abroad experience.

For international students, iCLA's Study Abroad Program is optional. Students can choose whether to go abroad for 1 or 2 semesters, or to stay in Japan for the full duration of their studies. One full year of the Study Abroad Program is compulsory for domestic Japanese students.

We have a comprehensive orientation and pre-departure program to help students choose their study abroad destination, complete the necessary visa procedures, and prepare for student life at the exchange destination.



"While studying abroad in England, I was able to both study subject areas I am interested in but are not offered at iCLA, but also I was able to increase my experience with independent research and academic studies. I was able to take courses in practical politics, political theory, and did area studies of the regional politics of sub-Saharan Africa and Russia, and the former Soviet Union during my time abroad. I was also able to study using the resources of some of the greatest libraries in the world while working through the program."

Haliie, USA
Studied Abroad at Oxford University in England

GLOBAL PARTNERS

Note: Partnerships may only be limited to certain departments/faculties within the universities.

NORTH AMERICA

Canada

- Acadia University
- Quest University
- St. Francis Xavier University
- York University

USA

- Augsburg College
- College of St. Scholastica
- Flagler College
- Florida International University
- Hamline University
- Southern Oregon University
- State University of New York at Oswego
- The College at Brockport State University of New York
- Warren Wilson College
- Westminster College

Mexico

- Universidad Panamericana

EUROPE

Norway

- Norwegian University of Science and Technology
- University of Bergen
- University of Tromsø - The Arctic University of Norway (UiT)
- Volda University College

Sweden

- Malmö Academy of Music at Lund University (MAM)

Finland

- Tampere University of Applied Sciences

Germany

- Hamburg University of Applied Sciences (HAW Hamburg)
- Heinrich Heine University Düsseldorf (Faculty of Arts and Humanities, Institute of Social Sciences)
- Jacobs University Bremen
- Ludwigshafen University of Business and Society University of Applied Sciences
- University of Applied Sciences Würzburg-Schweinfurt (FHWS)
- University of Duisburg - Essen (Faculty of Social Sciences)

Denmark

- Aalborg University (Faculty of Humanities)
- University of Southern Denmark (SDU) - (Faculty of Business and Social Sciences)

Netherlands

- Hogeschool van Amsterdam (Amsterdam University of Applied Sciences), School of Economics and Management
- University College Utrecht

United Kingdom	<ul style="list-style-type: none"> ■ University of Aberdeen ■ University of Hertfordshire ■ University of Sussex
Iceland	<ul style="list-style-type: none"> ■ Iceland Academy of the Arts (Department of Music)
Belgium	<ul style="list-style-type: none"> ■ Ghent University (Faculty of Arts & Philosophy, Political & Social Sciences)
Lithuania	<ul style="list-style-type: none"> ■ LCC International University ■ Mykolas Romeris University ■ Vilnius University
France	<ul style="list-style-type: none"> ■ IÉSEG School of Management ■ Les Facultés de l'Université Catholique de Lille ■ Sciences Po (Lille) ■ Université Catholique de l'Ouest
Italy	<ul style="list-style-type: none"> ■ The American University of Rome (AUR)
Spain	<ul style="list-style-type: none"> ■ University of Malaga
Austria	<ul style="list-style-type: none"> ■ FH Joanneum (FHJ)
Croatia	<ul style="list-style-type: none"> ■ University of Rijeka
Romania	<ul style="list-style-type: none"> ■ Romanian-American University (RAU) ■ West University of Timisoara (WUT)

AFRICA

Kenya	<ul style="list-style-type: none"> ■ United States International University-Africa
--------------	---

EURASIA

Azerbaijan	<ul style="list-style-type: none"> ■ ADA (Azerbaijan Diplomatic Academy) University
-------------------	--

ASIA

India	<ul style="list-style-type: none"> ■ O.P. Jindal Global University (OP JGU)
Philippines	<ul style="list-style-type: none"> ■ Ateneo de Manila University (ADMU) ■ University of the Philippines (UP)
Malaysia	<ul style="list-style-type: none"> ■ Taylor's University
Indonesia	<ul style="list-style-type: none"> ■ BINUS University ■ Universitas Muhammadiyah Yogyakarta
Hong Kong	<ul style="list-style-type: none"> ■ Lingnan University
Taiwan	<ul style="list-style-type: none"> ■ National Chi Nan University ■ National Taipei University
The Republic of Korea	<ul style="list-style-type: none"> ■ Kyung Hee University ■ Myongji University ■ The Catholic University of Korea
China	<ul style="list-style-type: none"> ■ Beijing Normal University - Hong Kong Baptist University United International College (UIC)
Thailand	<ul style="list-style-type: none"> ■ College of Music, Mahidol University (MSMU) ■ King Mongkut's Institute of Technology Ladkrabang ■ Thammasat University, Faculty of Political Science

OCEANIA

Australia	<ul style="list-style-type: none"> ■ Curtin University of Technology ■ Western Sydney University
------------------	--

STUDENT LIFE

Clubs and Societies

As you would expect from a university that counts over 65 Olympians among its alumni, there are plenty of competitive sports teams you can try out for. We also have a wide range of more casual sports and arts-related student-led university clubs and societies, and international students are highly encouraged to join. In total, we have over 90 clubs and societies to choose from!

Events

Many on-campus events are held throughout the academic year. Special highlights of the year are the winter and summer galas and the university-wide school festivals. We also support student initiative events, a great chance for you to express your creativity and grow your leadership skills, while being a fun way to engage the student community.

Part-Time Work

A part-time job in Japan can help you gain a head start on working experience and understanding Japanese workplace culture. There are opportunities off-campus if you are looking to work part-time while studying. International students on a student visa are able to apply for a special permission with the Japanese Immigration Bureau allowing them to work part-time, on the condition that it does not negatively affect their academic studies.

Accommodation

Our comfortable and affordable on-campus student accommodation is available to all our Japanese and international students. Living in iCLA's residence halls means being a part of a true cross-cultural community where global friendships are born. Our accommodation is designed so you can find a balance between privacy and social life that best suits your own lifestyle. All students have individual private bedrooms, with eight rooms sharing a common area, a mini kitchen, shower rooms, and toilets.

Campus Facilities

iCLA also has its own spacious cafeteria where students enrolled in our meal plan can enjoy nutritious and delicious meals served three times a day on weekdays. In our Language Acquisition Center (LAC) there are computers and various digital materials to assist with individual language learning, and students also have access to an extensive library of English and Japanese language books and multimedia materials.

The iCLA building also includes a Student Lounge, a martial arts dojo, a music studio, a traditional tatami room, and numerous study spaces for individual or group study. As a YGU student you also have access to all the student lounges, cafes and libraries on campus as well as free access to the fully equipped campus gym.

Talk to our Students!

You can chat online with our Student Ambassadors about life at iCLA





Being an iCLA student means living and studying in a place like no other. With state-of-the-art facilities, on campus accommodation, and a vibrant campus life with many clubs, societies and events, your time here should be exceptional.



HOW TO APPLY

iCLA welcomes students from diverse educational backgrounds. We have several application periods throughout the year giving students flexibility to decide when they are ready to join iCLA.

Application Procedure

1. Register using the online application system:
apply.icla.ygu.ac.jp
2. Fill out our online application form and upload all the required documents.
3. Pay the application fee of JPY 7,000.

Screening Method

Applications are evaluated based on a comprehensive review of all documents, including the Statement of Purpose and interview. Please refer to iCLA's 2023 Application Guideline to learn more about the application and screening method.

2023 Application Schedule

Intake	Admission Category	Application Period	
		Starting Date	Closing Date
Spring 2023	> Degree-seeking students > Transfer Students *applicants who need a student visa	Fri. April 1, 2022	Mon. Nov 21, 2022
	> Degree-seeking students > Transfer students *applicants who have a valid status of residence		Fri. Feb 17, 2023
Fall 2023	> Degree-seeking students > Transfer students *applicants who need a student visa	Thurs. Sep 1, 2022	Mon. Apr 17, 2023
	> Degree-seeking students > Transfer students *applicants who have a valid status of residence		Fri. Jun 23, 2023

Closing date is the final deadline for each intake. The entire admissions process (application through the notification of result) will usually be completed within a maximum of 40 days.

The deadline for payment and enrollment procedures must be completed within a maximum of 1 month of receiving your offer in order to secure a place at iCLA. Please see our online application system for a detailed schedule of notification and enrollment dates.

*Applicants who hold a valid status of residence defined as a Japanese passport, dual nationality, permanent residency, or special permanent resident certificate holder.

Tuition and Other Fees (JPY)

Tuition and Other Fees	First Year	Second Year and Onwards
Enrollment Fee	200,000	-
Tuition, Facility and Equipment	1,596,000	1,596,000
Total	1,796,000	1,596,000

Scholarships

Type	Amount of Exemption*	Selection Criteria
I	Full (100% tuition)	> Academic Achievement
II	3/4 (75% tuition)	> Extracurricular Achievements
III	Half (50% tuition)	> Financial Need
IV	1/4 (25% tuition)	

Renewable every year based on overall performance. Maximum of 4 years.

* Scholarship does not include room, utilities & miscellaneous fees, meal plan and other living expenses.

Room and Meal Plan Fees (JPY)

Room and Meal Plan	Fee
Room and Utilities*	564,000/year
Meal Plan	Approx. 350,000/year (3 meals/day)

One-time non-refundable cleaning & repainting fee of JPY 30,000 required when moving in.

All students are required to live in the iCLA residence halls in their first year. Meals are not served during weekends.

* Water, gas, electricity, maintenance (including common area).

Want to know more?

For more details, visit www.icla.ygu.ac.jp or contact the Admissions Office directly at i.admission@c2c.ac.jp

WHAT HAPPENS NEXT

1

Announcement of Results

Applicants will be contacted through the email address indicated on their online application form. Scholarship offers will also be sent out.

2

Offer Acceptance and Payment of Fees

Log in to the online application system and accept your offer.

Pay the enrollment, tuition, and other fees by the indicated deadline.

Fill out and send all required enrollment documents to the Admissions Office. The documents must arrive by the specified deadline.

3

Student Visa Application

iCLA applies for your Certificate of Eligibility (CoE) at the Immigration Bureau of Japan. Once your CoE is issued, your CoE will be sent to you by post. Visit an Embassy or Consulate of Japan with the CoE to apply for your student visa to enter Japan.

4

Accommodation Arrangement

Fill out the Pre-Departure Forms and after your application details are confirmed by our Student Affairs Team, the invoice for room, meal plan, and rental fees will be sent to you. These fees need to be paid before your arrival in Japan.

5

Departure Preparation

Receive your student visa from the Embassy or Consulate-General of Japan and begin your preparation to come to iCLA.

6

Arrival at iCLA & Check-in

This is the start of your iCLA adventure! Staff and students will help you move into student accommodation and show you around the Yamanashi Gakuin University campus.

7

Orientation

Orientation Week will be held to help new students settle into iCLA and meet the rest of the academic community.



山梨学院大学
YAMANASHI GAKUIN UNIVERSITY

CONNECT WITH US

-  [iCLA \(International College of Liberal Arts\)](#)
-  [icla.ygu](#)
-  [icla_ygu](#)
-  [iclajapan](#)

International College of Liberal Arts (iCLA) Yamanashi Gakuin University

Address: 2-4-5 Sakaori, Kofu,
Yamanashi 400-8575 Japan

TEL: +81-55-224-1350

General Inquiries: icla.contact@c2c.ac.jp

Admission Inquiries: i.admission@c2c.ac.jp

www.icla.ygu.ac.jp

*The information in this brochure is accurate as of June 2022.

